

DRY SYSTEMS TECHNOLOGIES®

DRY SYSTEM® DIESEL ELECTRIC PACKAGE ELECTRICAL PERMISSIBILITY CHECKLIST M261-008-01

Page 1 of 5

MODEL M261 MSHA CERTIFIED DIESEL ELECTRIC PACKAGE

MSHA DE-_____

DRY SYSTEMS TECHNOLOGIES®

8102 Lemont Road, Suite 700

Woodridge, IL 60517, USA

Phone: 630-427-2051 * Fax: 630-427-1036

E-mail: eng@drysystemstech.com

DO NOT CHANGE WITHOUT MSHA APPROVAL

REVISION 00 * DATED OCTOBER 2007

DRY SYSTEMS TECHNOLOGIES®

8102 Lemont Road, Suite 700, Woodridge, Illinois 60517, USA
Phone: 630-427-2051 * Fax: 630-427-1036 * E-mail: eng@drysystemstech.com

* ELECTRICAL PERMISSIBILITY CHECKLIST *

M261-008-01 **Page 2**

The component and function checks in this document that are identified as “weekly” must be performed during each weekly maintenance examination in accordance with 30 CFR, Section 75.1914. All checks must be performed in fresh air, in an area where permissible equipment is not required.

Machine Approval # _____ Serial # _____

Examination Date _____ Conducted By _____

1. [] All electrical enclosures have a MSHA plate attached that is clearly stamped with a MSHA certification number. The certification number must match the number listed in the table below.
[WEEKLY]

Enclosure	Quantity of Item Per Machine	Certification Number
Alternator	1	07-JA040001-0
Headlight Switch	1	XP2456-2
Alt. Headlight Switch	1	XP3844-1
Alt. Headlight Switch	1	XP2166
Alt. Headlight Switch	1	XP3846-0, -1
Alt. Headlight Switch	1	XP1683-2
Headlight	4, Opt 5	XP3938-0, -1
Alt. Headlight	4, Opt 5	XP3221-0
Alt. Headlight	4, Opt 5	XP1468-16, -31

2. [] All electrical enclosures are securely mounted and all vulnerable electrical components are protected from physical damage.
[WEEKLY]
3. [] Lockwashers or equivalent devices are provided for all bolts, screws, or studs that secure parts of the explosion-proof enclosures. All bolts, screws, and studs are in place and tightened.
[WEEKLY]
4. [] None of the fastenings used for joints on the explosion-proof enclosures are used for attaching non-essential parts or for making electrical connections.
[WEEKLY]
5. [] Use feeler gauges of the appropriate size to ensure that clearances in all accessible flame path joints, between the enclosures and the corresponding covers, are not exceeded. **(See Table Below)**
[WEEKLY]

DO NOT CHANGE WITHOUT MSHA APPROVAL
REVISION 00 * DATED OCTOBER 2007

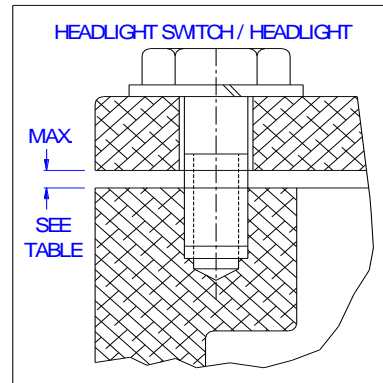
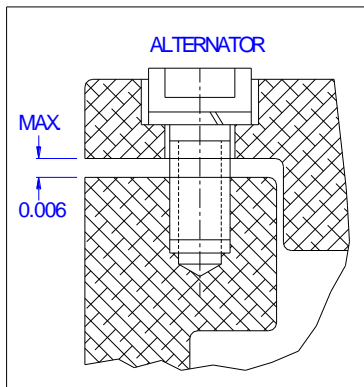
DRY SYSTEMS TECHNOLOGIES®

8102 Lemont Road, Suite 700, Woodridge, Illinois 60517, USA
 Phone: 630-427-2051 * Fax: 630-427-1036 * E-mail: eng@drysystemstech.com

* ELECTRICAL PERMISSIBILITY CHECKLIST *

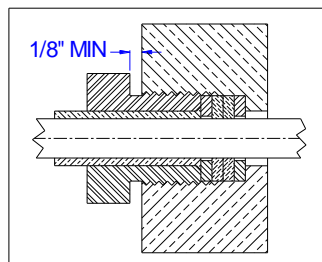
M261-008-01 **Page 3**

Component	Cert. No.	Clearance (Inches)
Alternator	07-JA040001-0	0.006
Headlight Switch	XP2456-2	0.006
Headlight Switch	XP3844-1	0.002
Headlight Switch	XP1683-2, XP2166, XP3846-0,-1	0.003
Headlight	XP3221-0	0.002
Headlight	XP3938-0,-1, XP1468-16,-31	N/A



6. [] Headlight enclosures are intact, not cracked or broken, and the lenses are not loose.
 [WEEKLY]

7. [] All lead entrances (packing glands) are assembled so that the cable jacket penetrates into the enclosure and when tightened, a 1/8" minimum clearance remains between the packing nut and stuffing box. (See Figure)
 [WEEKLY]



DO NOT CHANGE WITHOUT MSHA APPROVAL
 REVISION 00 * DATED OCTOBER 2007

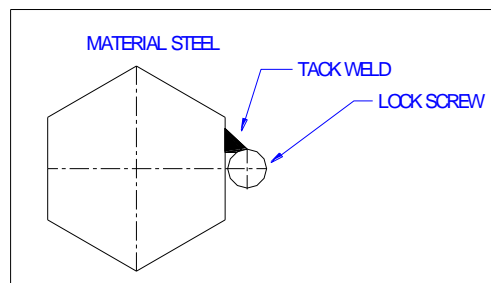
DRY SYSTEMS TECHNOLOGIES®

8102 Lemont Road, Suite 700, Woodridge, Illinois 60517, USA
Phone: 630-427-2051 * Fax: 630-427-1036 * E-mail: eng@drysystemstech.com

* ELECTRICAL PERMISSIBILITY CHECKLIST *

M261-008-01 **Page 4**

8. [] All packing nuts and stuffing boxes are secured from loosening by a locking screw, wire, or other means.
[WEEKLY]
9. [] All unused lead entrances are closed with metal plugs, which are secured in place by spot welding, brazing, or equivalent. **(See Figure)**
[WEEKLY]



10. [] Headlights are installed at each end of the machine.
[WEEKLY]
11. [] Headlights are operable.
[WEEKLY]
12. [] Headlight switches do not control or operate any electrical circuits other than the headlights.
[WEEKLY]
13. [] All joints forming the flame arresting paths (flanges or covers) are smooth and free from rust, corrosion and pitting.
14. [] Where required, electric cables outside of explosion proof enclosures are protected by flame resistant hose conduit. If hose conduit is used, it must be securely clamped at both ends and MSHA markings appear as Flame-Resistant", US MSHA.
15. [] Cables are clamped in place to prevent undue movement.
16. [] Cables are not subject to abrasion from sharp corners or edges.

DRY SYSTEMS TECHNOLOGIES®

8102 Lemont Road, Suite 700, Woodridge, Illinois 60517, USA
Phone: 630-427-2051 * Fax: 630-427-1036 * E-mail: eng@drysystemstech.com

*** ELECTRICAL PERMISSIBILITY CHECKLIST ***

M261-008-01 Page 5

- 17. Cables are protected from mechanical damage by position, flame resistant hose conduit, metal tubing, or troughs. Note: Flexible or threaded rigid metal conduit is not acceptable.

- 18. Cables are isolated from hydraulic lines, hydraulic components and fuel lines.

- 19. Cables are flame resistant if not enclosed in hose conduit. This is indicated by "MSHA" markings on the cable.

- 20. Fuses are installed inside the alternator housing for overload protection of each power conductor in the electrical system. The fuses are of the proper dimensions for the fuse holders and do not exceed the current rating listed on drawings M261-003-01 and M261-007-01.

- 21. Electrical connections inside the electrical enclosures are secure and are insulated where space is limited. The ground conductors are not broken and are securely attached.

DO NOT CHANGE WITHOUT MSHA APPROVAL
REVISION 00 * DATED OCTOBER 2007