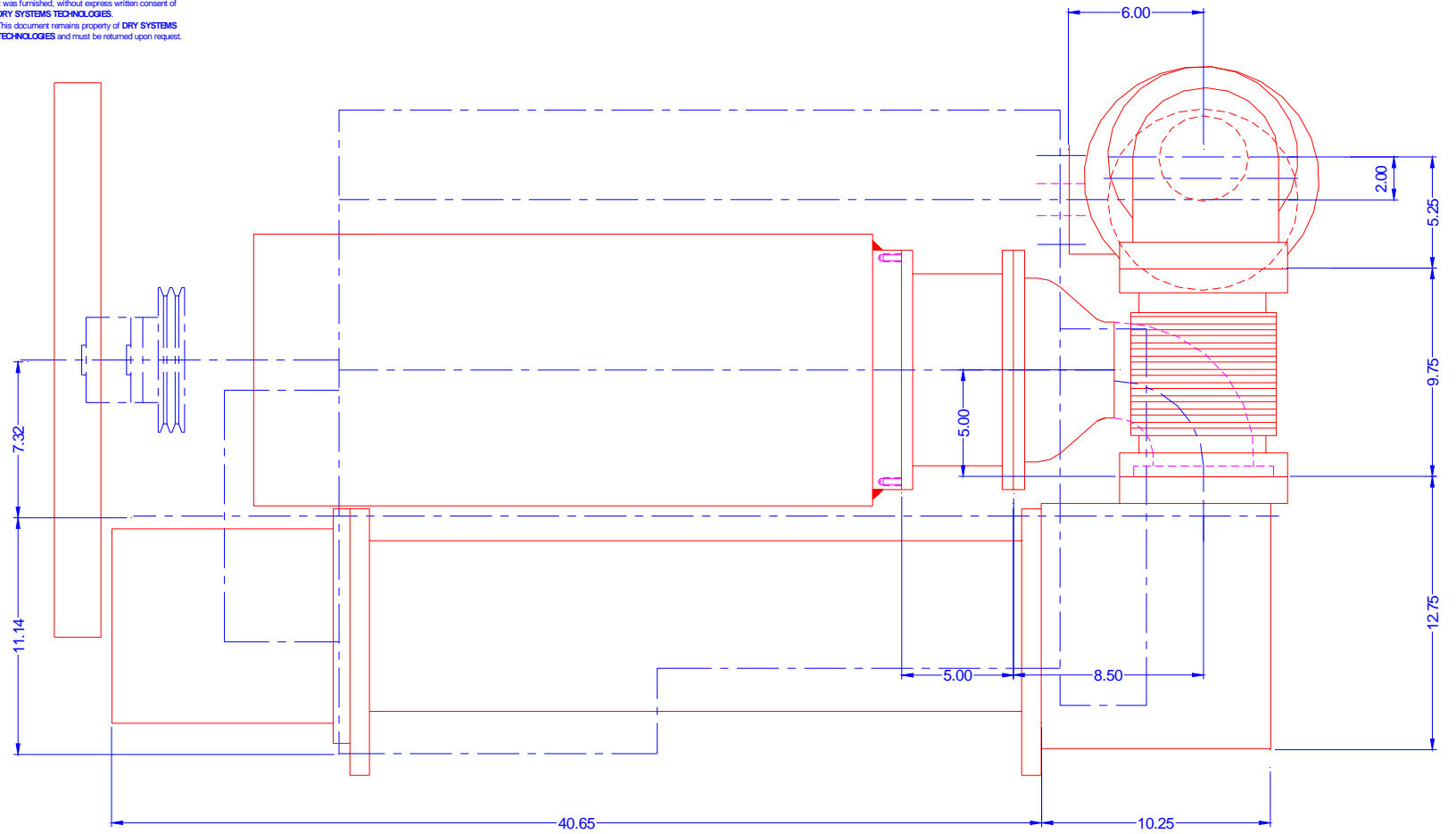
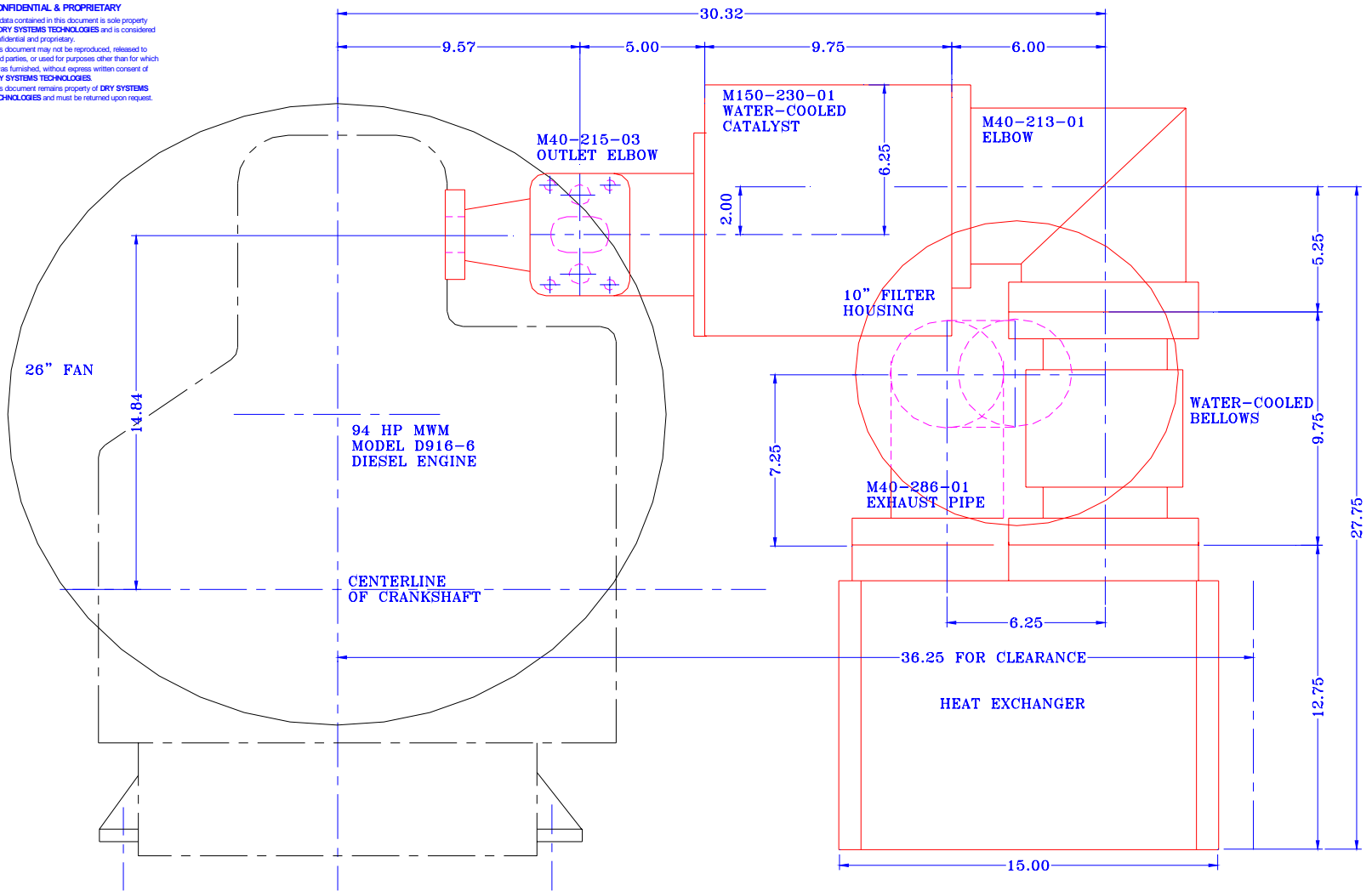


**CONFIDENTIAL & PROPRIETARY**  
 All data contained in this document is sole property of DRY SYSTEMS TECHNOLOGIES and is considered confidential and proprietary.  
 This document may not be reproduced, released to third parties, or used for purposes other than for which it was furnished, without express written consent of DRY SYSTEMS TECHNOLOGIES.  
 This document remains property of DRY SYSTEMS TECHNOLOGIES and must be returned upon request.



<b>TOLERANCES</b>		<b>DRY SYSTEMS TECHNOLOGIES</b> 8102 LEBMONT ROAD, SUITE 700 WOODRIDGE, IL 60517 Phone: 630-271-2200 Fax: 630-271-1035 E-Mail: <a href="mailto:info@drytechnologies.com">info@drytechnologies.com</a>	<b>SIDEVIEW (Installation)</b>		1
Linear unless noted			DATE	DESIGNED BY	REVISION
Machined: ± 0.005			FLL	July 96	Number Pass
Fabricated: ± 0.02					DESCRIPTION
Angular: ± 1/2°					
Surface finish: 125					
				<b>M40-103-12</b>	

**CONFIDENTIAL & PROPRIETARY**  
 All data contained in this document is sole property of DRY SYSTEMS TECHNOLOGIES and is considered confidential and proprietary.  
 This document may not be reproduced, released to third parties, or used for purposes other than for which it was furnished, without express written consent of DRY SYSTEMS TECHNOLOGIES.  
 This document remains property of DRY SYSTEMS TECHNOLOGIES and must be returned upon request.



<b>TOLERANCES</b>		<b>DRY SYSTEMS TECHNOLOGIES</b> 8102 LEBMONT ROAD, SUITE 700 WOODRIDGE, IL 60517 Phone: 630-427-2951 Fax: 630-427-1036 E-Mail: eng@drysystems.com	<b>ENDMEW (Installation)</b>		ISSUED: 1
Linear unless noted			SCALE: FULL	DATE: July 96	DESIGNED: Norbert Pass
Machined: ± 0.005			DRAWN: See Detail Drawings		CHECKED:
Fabricated: ± 0.02			DWG NO: M40-101-11		
Angular: ± 1/2°			SURFACE FINISH: See Detail Drawings		
Surface finish 125					