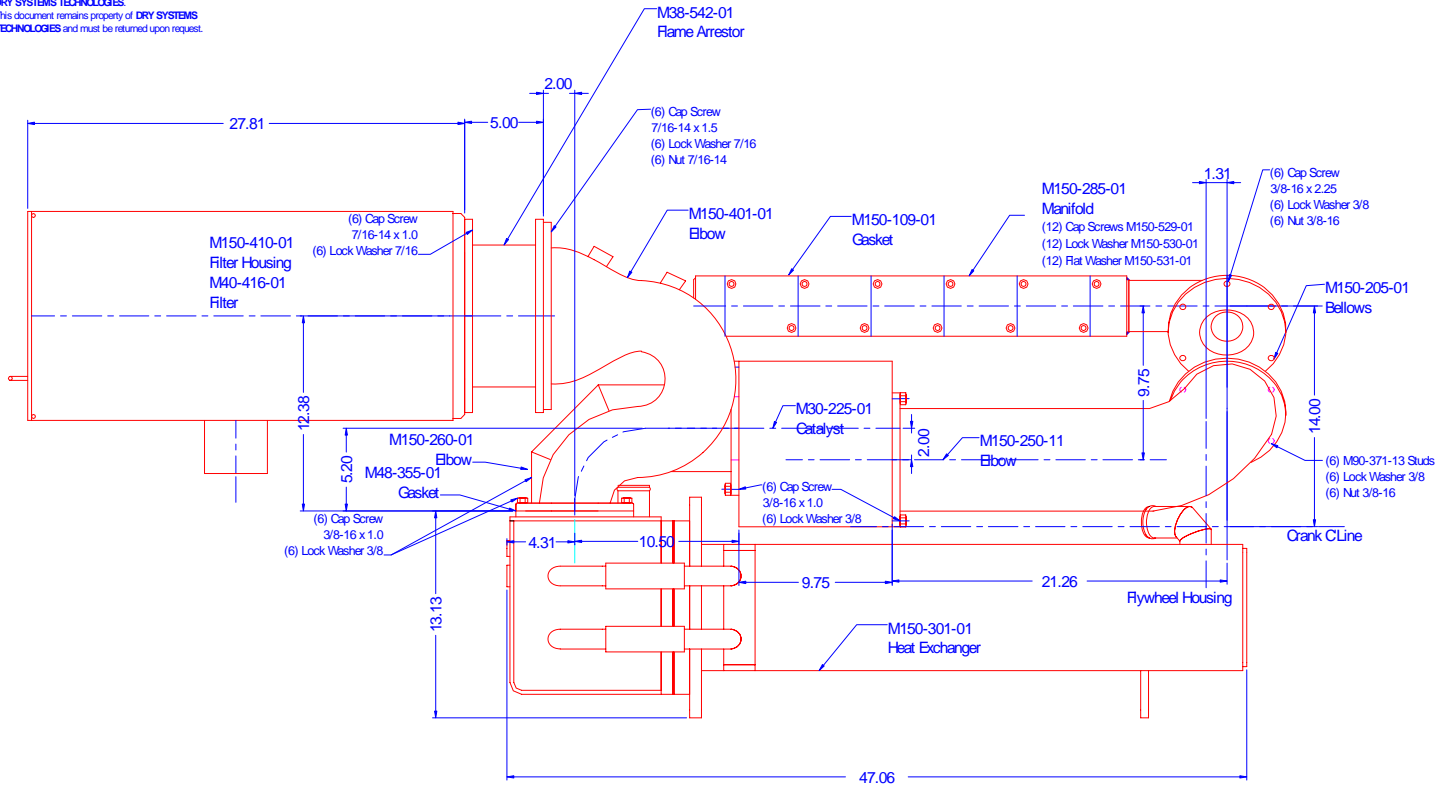


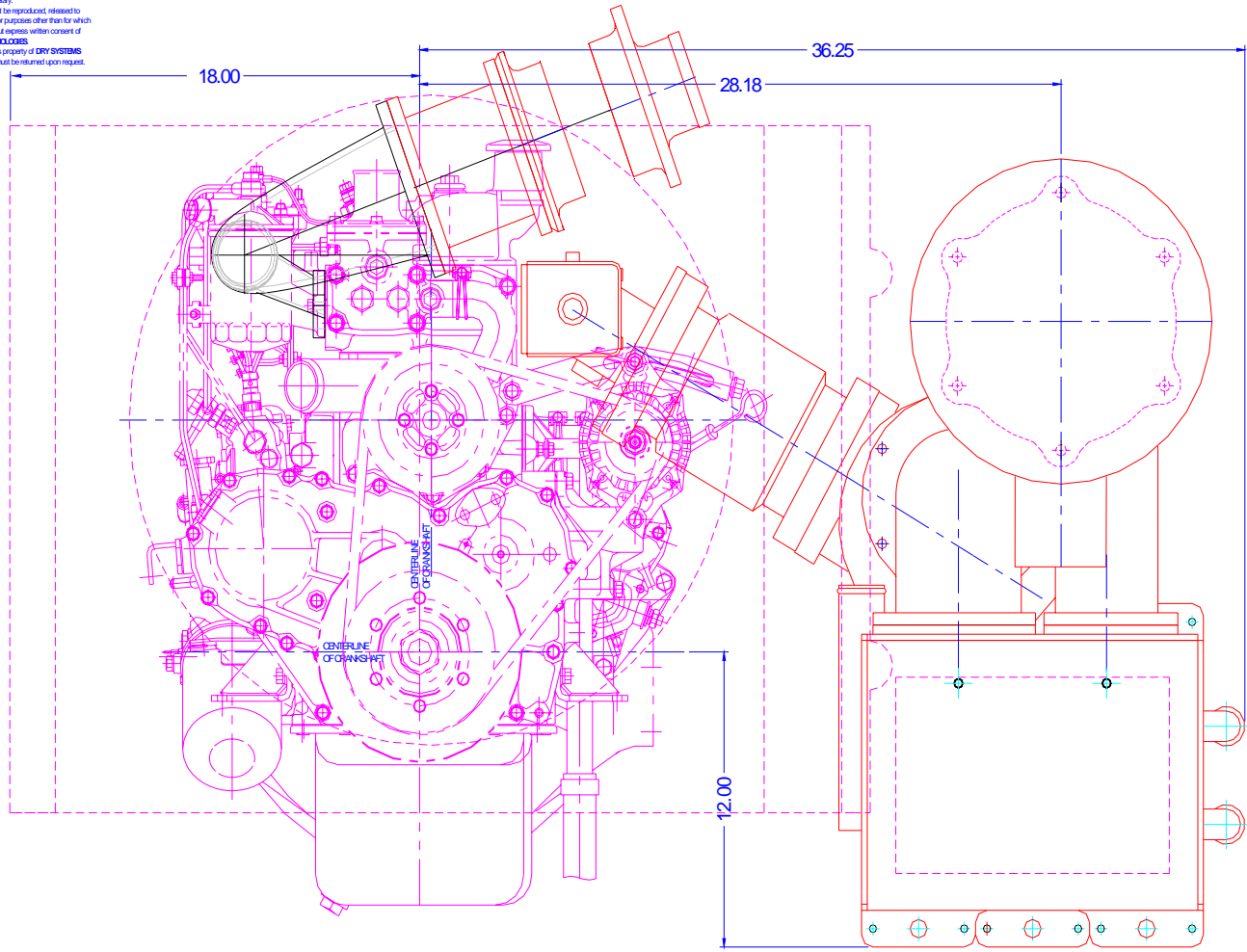
CONFIDENTIAL & PROPRIETARY

All data contained in this document is sole property of DRY SYSTEMS TECHNOLOGIES and is considered confidential and proprietary. This document may not be reproduced, released to third parties, or used for purposes other than for which it was furnished, without express written consent of DRY SYSTEMS TECHNOLOGIES. This document remains property of DRY SYSTEMS TECHNOLOGIES and must be returned upon request.



TOLERANCES		DRY SYSTEMS TECHNOLOGIES 8102 LEBMONT ROAD, SUITE 700 WOODRIDGE, IL 60517 Phone: 630-427-2051 Fax: 630-427-1036 E-Mail: eng@dryssystemstech.com	REVISIONS			
Linear	unless noted		SIDEVIEW	REVISED		1
Machined	± 0.005		DATE	DESIGNED BY		Norbert Plass
Fabricated	± 0.02		18-Jan-00	APPROVED BY		Norbert Plass
Angular	± 1/2°		MATERIAL	See Detail Drawings		
Surface finish	125	REV	0904 RG Updated		M150-104-01	

CONFIDENTIAL & PROPRIETARY
 All data contained in this document is sole property of DRY SYSTEMS TECHNOLOGIES and is considered confidential and proprietary.
 This document may not be reproduced, released to third parties, or used for purposes other than for which it was furnished, without express written consent of DRY SYSTEMS TECHNOLOGIES.
 This document remains property of DRY SYSTEMS TECHNOLOGIES and must be returned upon request.



TOLERANCES

Linear unless noted
 Machined: ± 0.005
 Fabricated: ± 0.02
 Angular: ± 1/2°
 Surface finish: 125

DATE	BY	APP'D
01/18/04	RG	Updated

DRY SYSTEMS TECHNOLOGIES
 8102 LEMONT ROAD, SUITE 700
 WOODRIDGE, IL 60517
 Phone: 630-427-2261 Fax: 630-427-1036
 E-Mail: info@dryssystem.com

DESCRIPTION: EXHAUST MANIFOLD
 SIZE: FULL DATE: 14 FEB 00
 DRAWN BY: Norbert Pass
 APPROVED BY: Norbert Pass
 See Detail Drawings
M150-105-01

REVISED: 1

