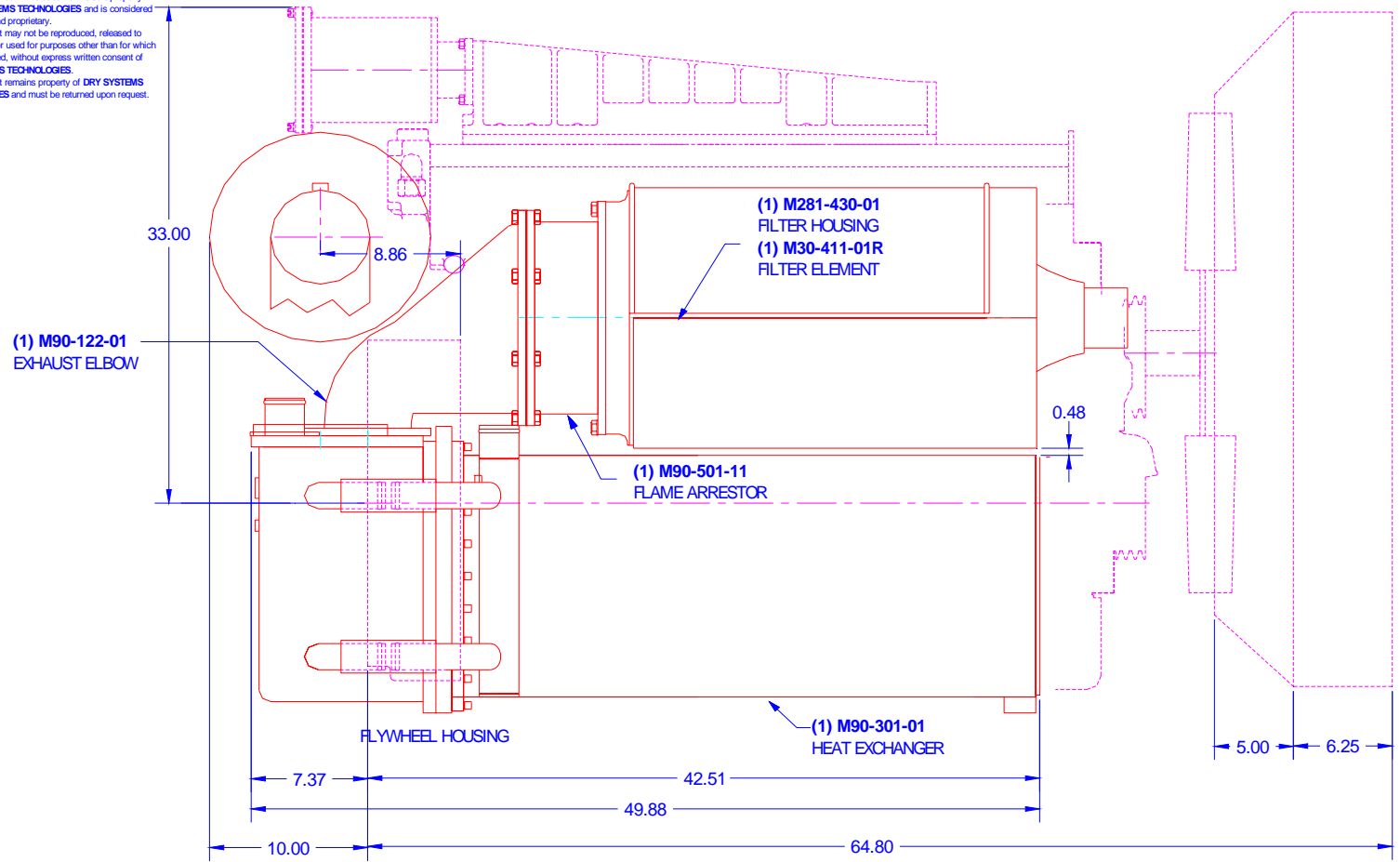


CONFIDENTIAL & PROPRIETARY
 All data contained in this document is sole property of DRY SYSTEMS TECHNOLOGIES and is considered confidential and proprietary. This document may not be reproduced, released to third parties, or used for purposes other than for which it was furnished, without express written consent of DRY SYSTEMS TECHNOLOGIES. This document remains property of DRY SYSTEMS TECHNOLOGIES and must be returned upon request.

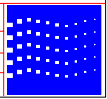


Caterpillar 3306 PCTA
 190HP @ 2200 RPM

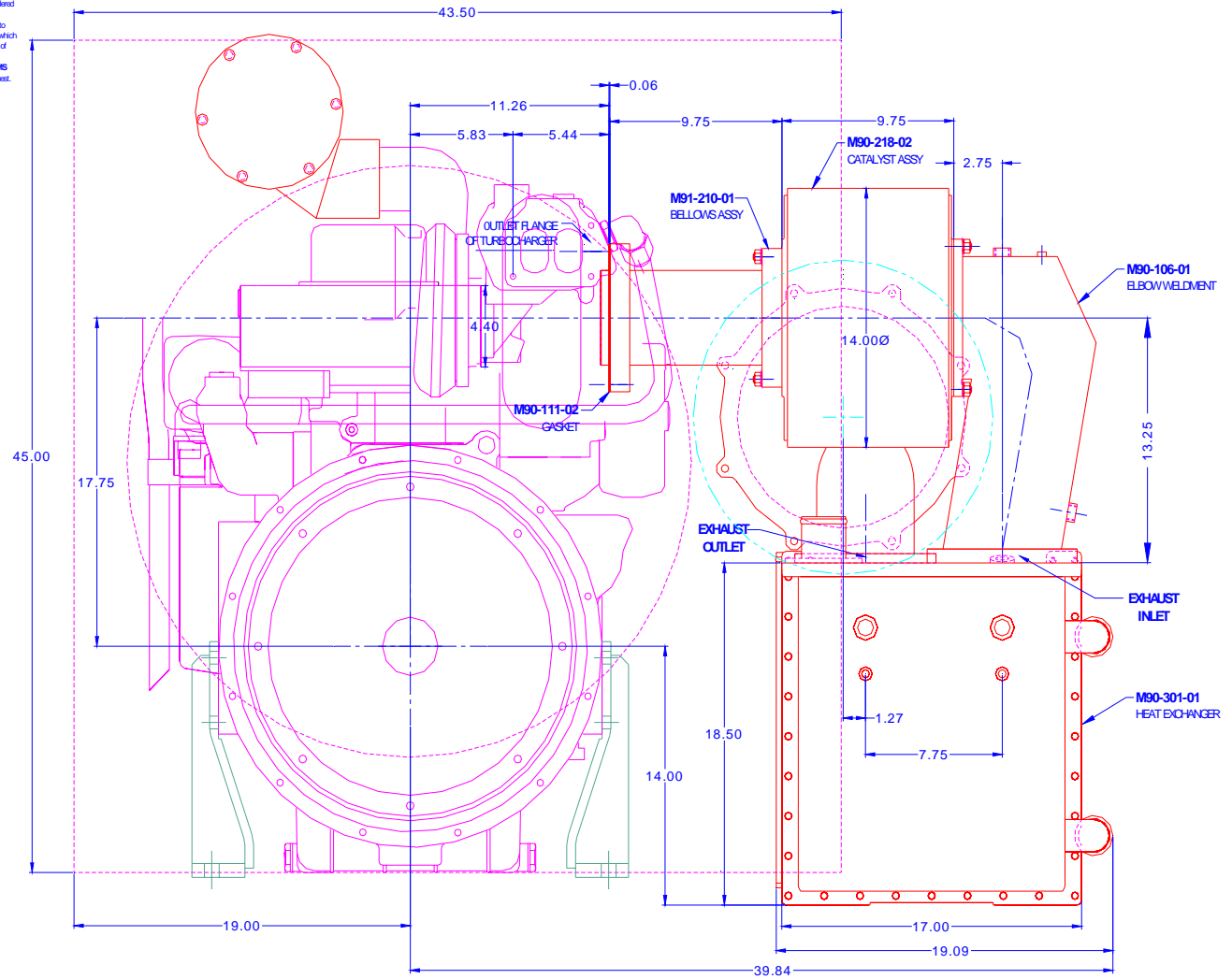
TOLERANCES	
Linear unless noted	
Machined: ± 0.005	
Fabricated: ± 0.01	
Angular: ± 1/2°	
Surface finish 125	

DRY SYSTEMS TECHNOLOGIES
 8102 LEMONT ROAD, SUITE 700
 WOODRIDGE, IL 60517
 Phone: (630) 427-2091 Fax: (630) 427-5206
 E-Mail: eng@dryssystemstech.com

DESCRIPTION		EX-HAUST SIDEVIEW w/ RAD		NO. REVISIONS
SCALE	DATE	DESIGNED BY	APPROVED BY	
FULL	15 May 2007	Nasir Imtiaz		
DRAWN		APPROVED BY		
Shea Detail Drawings		Roger Gibbs		
M90-102-11				



CONFIDENTIAL & PROPRIETARY
 All data contained in this document is sole property of DRY SYSTEMS TECHNOLOGIES and is considered confidential and proprietary. This document may not be reproduced, released to third parties, or used for purposes other than for which it was furnished, without express written consent of DRY SYSTEMS TECHNOLOGIES. This document remains property of DRY SYSTEMS TECHNOLOGIES and must be returned upon request.



Caterpillar 3306 PCTA
190HP @ 2200 RPM

TOLERANCES

Linear unless noted
 Machined ± 0.005
 Fabricated ± 0.02
 Angular ± 1/2°
 Surface finish 125

DRY SYSTEMS TECHNOLOGIES
 8102 LEMONT ROAD, SUITE 700
 WOODRIDGE, IL 60517
 Phone: 630-427-2651 Fax: 630-427-1336
 E-Mail: enquiry@dryssystemstech.com

EXHAUST ENDVIEW w/WRAD

DATE: 15 May 2007
 DRAWN BY: Nasir Imtiaz
 CHECKED BY: Roger Gibbs
M90-101-11

