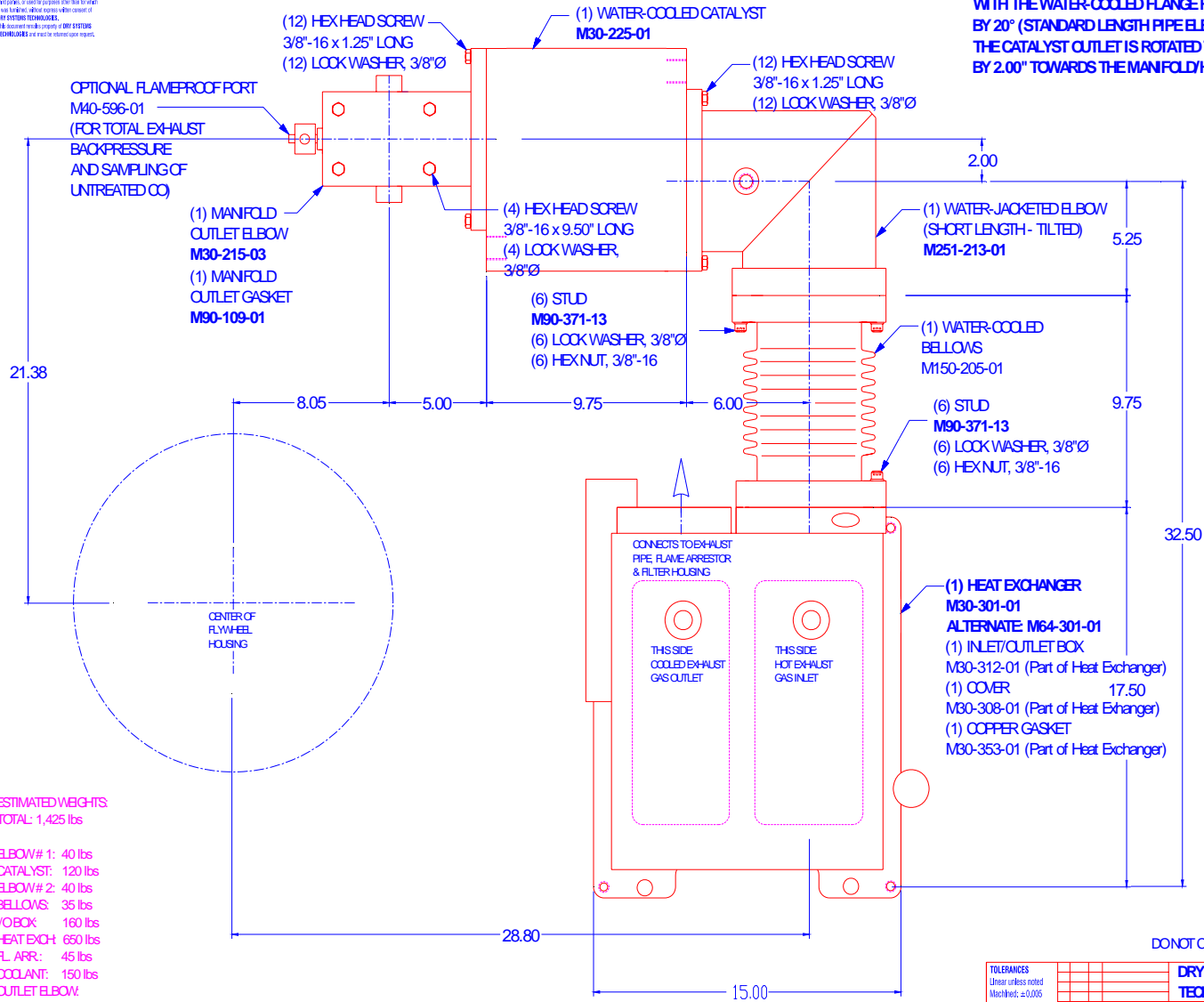


CONFIDENTIAL & PROPRIETARY
 All information contained herein is the property of DRY SYSTEMS TECHNOLOGIES, INC. and is not to be disclosed, copied, or used for any purpose other than the specific project for which it was prepared, without the express written consent of DRY SYSTEMS TECHNOLOGIES, INC. All dimensions are in inches, unless otherwise specified.

MODIFIED
 BASED ON MSHA APPROVED M30 SYSTEM
 WITH THE WATER-COOLED FLANGE ROTATED
 BY 20° (STANDARD LENGTH PIPE ELBOW)
 THE CATALYST OUTLET IS ROTATED TO BE OFFSET
 BY 2.00" TOWARDS THE MANFOLD/HEAT EXCHANGER



ESTIMATED WEIGHTS
 TOTAL: 1,425 lbs

ELBOW# 1: 40 lbs
 CATALYST: 120 lbs
 ELBOW# 2: 40 lbs
 BELLOWS: 35 lbs
 I/O BOX: 160 lbs
 HEAT EXCH: 650 lbs
 FL. ARR: 45 lbs
 COOLANT: 150 lbs
 OUTLET ELBOW: 50 lbs
 FILTER HSG: 135 lbs

DO NOT CHANGE THIS DRAWING WITHOUT MSHA APPROVAL

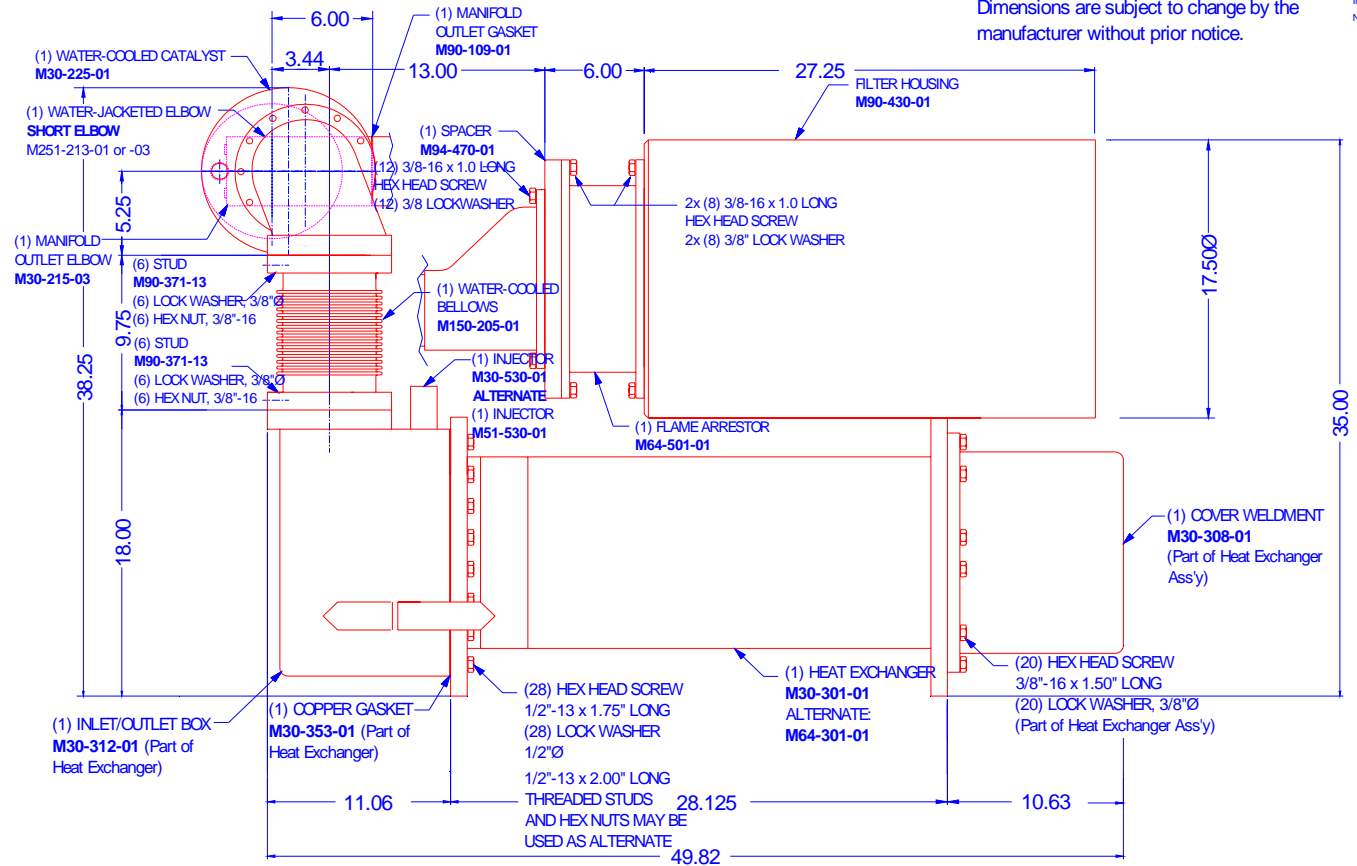
TOLERANCES	DATE	BY	CHKD	APP'D	REV
Linear unless noted					
Machined: ±0.005					
Fabricated: ±0.01					
Angular: ±1/2°					
Surface Finish: 125					

DRY SYSTEMS TECHNOLOGIES	EXHAUST SYSTEM ASSY	1
8102 LEMONT ROAD SUITE 700	DATE: 12 August 2004	DESIGN: Robert Price
WOODBRIDGE, IL 60517		
Phone: 815-452-2255 Fax: 815-452-1348		
EMAIL: sales@drysystems.com		
	M251-117-01	

CONFIDENTIAL & PROPRIETARY
 All information contained herein is the property of DRY SYSTEMS TECHNOLOGIES, LLC and is intended for use only by the recipient. No part of this document may be reproduced, stored in a retrieval system, or transmitted in any form or by any means, electronic, mechanical, photocopying, recording, or by any information storage and retrieval system, without the prior written permission of DRY SYSTEMS TECHNOLOGIES, LLC. All rights reserved. DRY SYSTEMS TECHNOLOGIES, LLC reserves the right to modify this document without notice.

INSTALLATION DRAWING
 All dimensions are for reference only.
 See manufacturing drawings for fabrication.
 Dimensions are subject to change by the manufacturer without prior notice.

INCHES
 ALL DIMENSIONS ON THIS DRAWING ARE INCHES, UNLESS NOTED OTHERWISE



MODIFIED
 BASED ON MSHA APPROVED M30 SYSTEM
 WITH THE WATER-COOLED FLANGE ROTATED
 BY 20° (STANDARD LENGTH PIPE ELBOW)
 THE CATALYST OUTLET IS ROTATED TO BE OFFSET
 BY 2.00" TOWARDS THE MANIFOLD/HEAT EXCHANGER

DO NOT CHANGE THIS DRAWING WITHOUT MSHA APPROVAL

TOLERANCES Linear unless noted Machined: ±0.005 Fabricated: ±0.01 Angular: ±1/2° Surface Finish: 125		DRY SYSTEMS TECHNOLOGIES 8102 LEMONT ROAD WOODRIDGE, IL 60517 Phone: (815) 427-2000 Fax: (815) 427-7000 E-Mail: enr@drysystemstech.com	EXHAUST SYSTEM ASSY DATE: 13 October 2002 DRAWN BY: Northern Plains CHECKED BY: Northern Plains APPROVED BY: Northern Plains	REVISION: 1 	