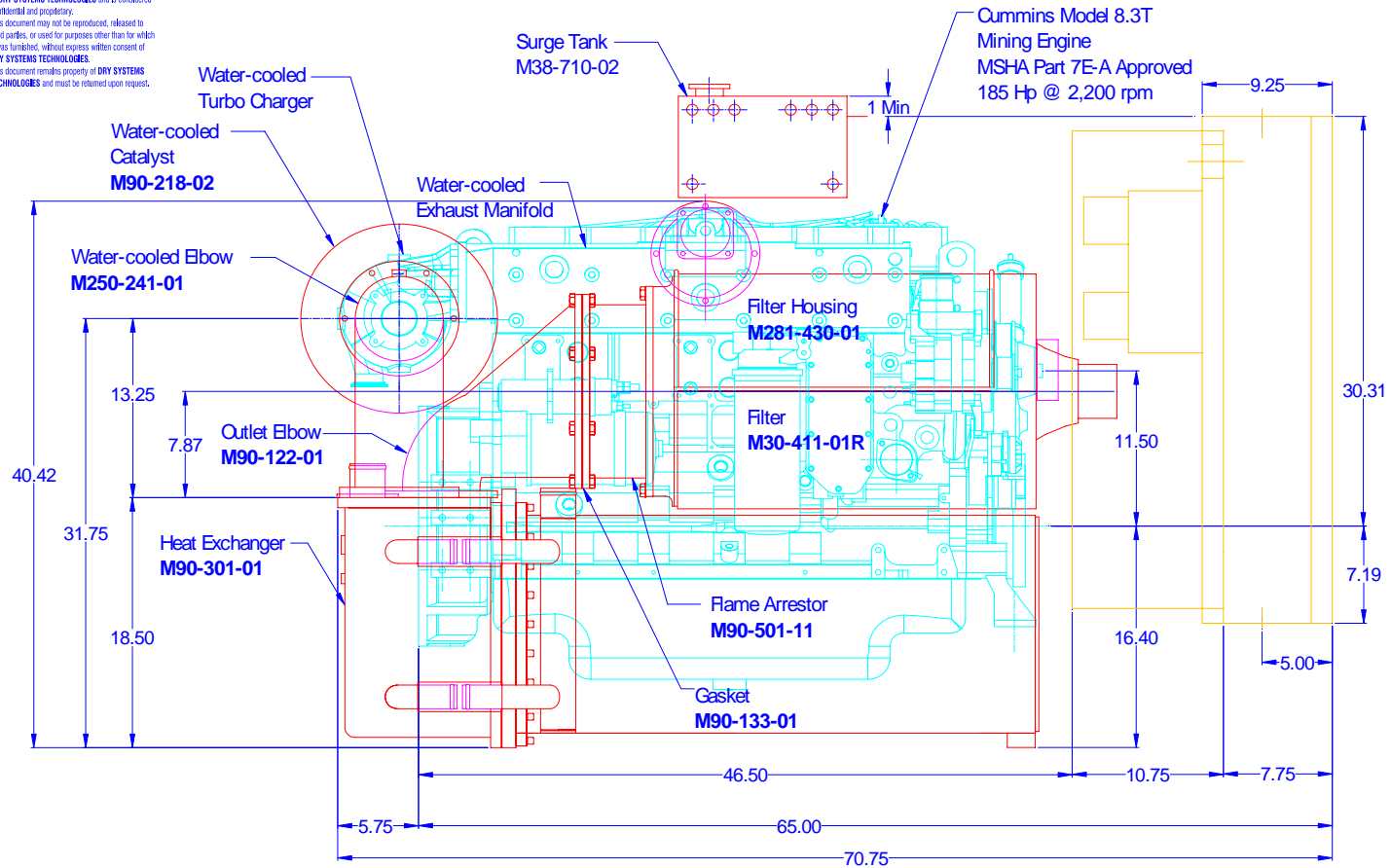


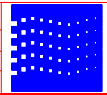
All info contained in this document is sole property of DRY SYSTEMS TECHNOLOGIES and is considered confidential and proprietary. This document may not be reproduced, released to third parties, or used for purposes other than for which it was furnished, without express written consent of DRY SYSTEMS TECHNOLOGIES. This document remains property of DRY SYSTEMS TECHNOLOGIES and must be returned upon request.



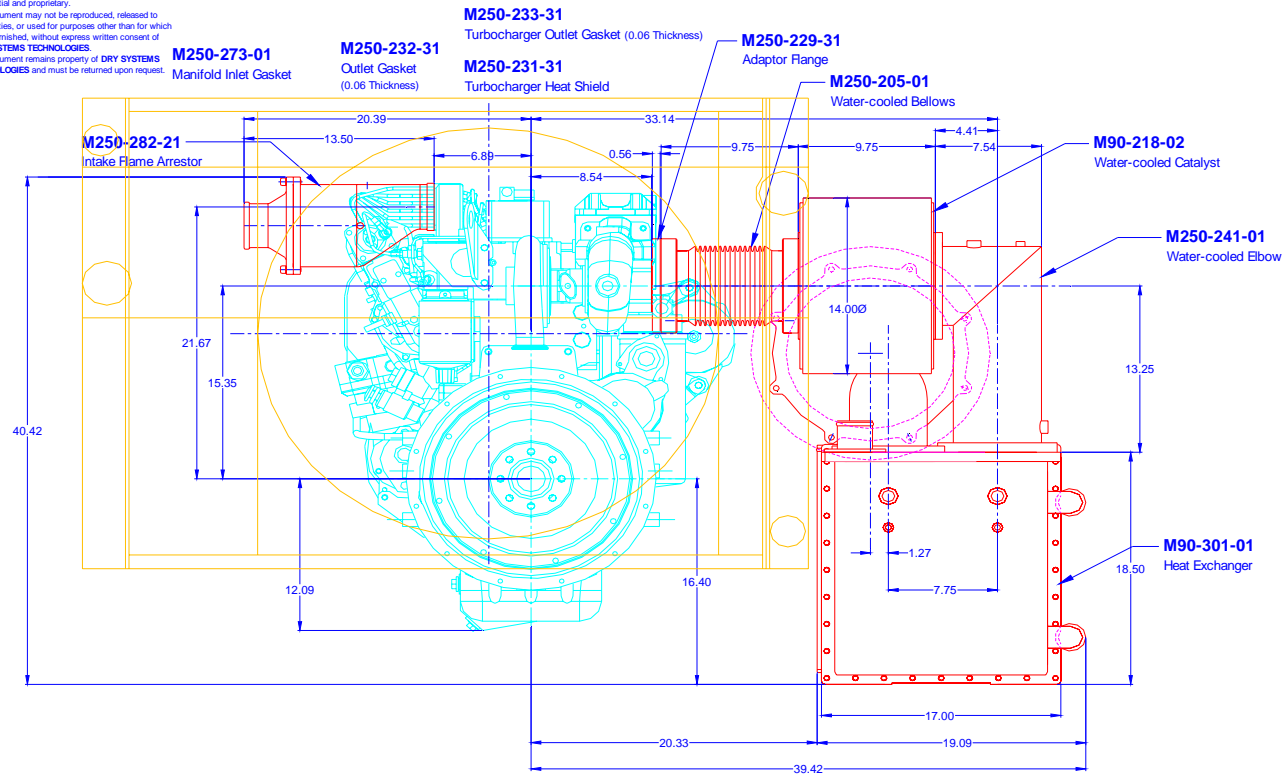
| TOLERANCES | |
|---------------------|--|
| Linear unless noted | |
| Machined: ±0.005 | |
| Fabricated: ±0.01 | |
| Angular: ±1/2° | |
| Surface Finish: 125 | |

DRY SYSTEMS TECHNOLOGIES
 8102 LEMONT ROAD - Suite 700
 WOODRIDGE, IL 60517
 Phone: 630-427-2051 Fax: 630-427-1036
 E-Mail: info@dry-systems.com

CUMMINS 8.3 SIDEVIEW
 DATE: May 9, 2007
 DRAWN BY: Nasir Imitiaz
 CHECKED BY: Roger Gibbs
 See Detail Drawings
M250-102-11



All data contained in this document is sole property of DRY SYSTEMS TECHNOLOGIES and is considered confidential and proprietary. This document may not be reproduced, released to third parties, or used for purposes other than for which it was furnished, without express written consent of DRY SYSTEMS TECHNOLOGIES. This document remains property of DRY SYSTEMS TECHNOLOGIES and must be returned upon request.



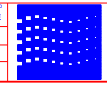
**INSTALLATION DRAWING
185 Hp Cummins 8.3 Turbo**

| TOLERANCES | |
|---------------------|--|
| Linear unless noted | |
| Machined: ± 0.005 | |
| Fabricated: ± 0.01 | |
| Angular: ± 1/2° | |
| Surface finish 125 | |

DRY SYSTEMS TECHNOLOGIES
8102 LEMONT ROAD - Suite 700
WOODRIDGE, IL 60517
Phone: 630-421-2000 Fax: 630-421-1038
E-Mail: esg@dryssystemstech.com

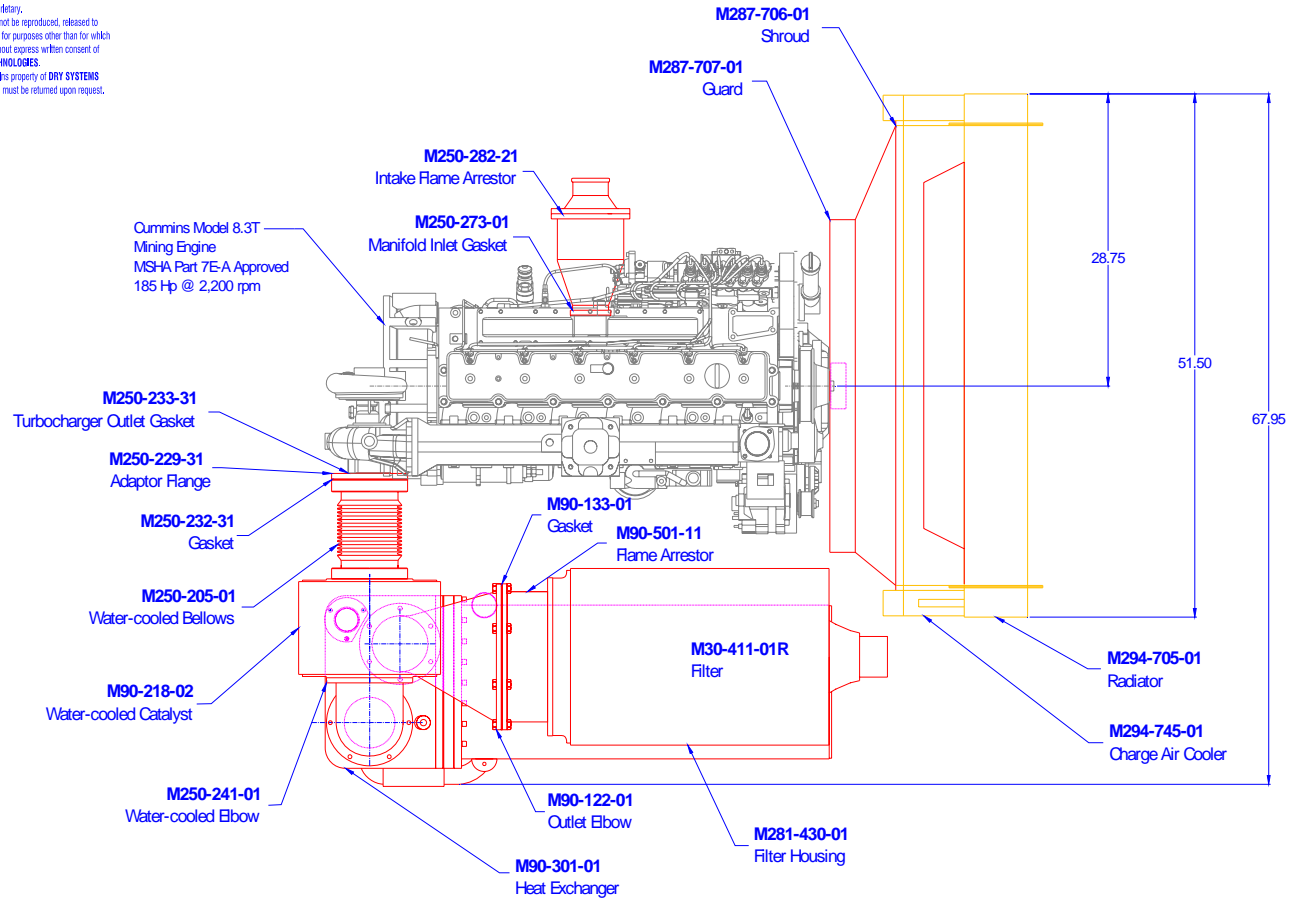
| DATE | BY | DESCRIPTION | REV |
|------|-------------|------------------------------|-----|
| FULL | May 9, 2007 | Nesir Imitiaz Roger Gibbs | ONE |

DST EXHAUST ENDVIEW



M250-100-11

All data contained in this document is sole property of DRY SYSTEMS TECHNOLOGIES and is considered confidential and proprietary.
 This document may not be reproduced, released to third parties, or used for purposes other than for which it was furnished, without express written consent of DRY SYSTEMS TECHNOLOGIES.
 This document remains property of DRY SYSTEMS TECHNOLOGIES and must be returned upon request.



| | | | | | | | | | |
|---|--|---|--|----------------------------------|--|----------------------------------|--|--|--|
| TOLERANCES Linear unless noted Machined: ±0.005 Fabricated: ±0.01 Angular: ±1/2° Surface Finish: 125 | | | | | | | | | |
| | | | | | | | | | |
| | | | | | | | | | |
| | | | | | | | | | |
| | | | | | | | | | |
| DRY SYSTEMS TECHNOLOGIES 6102 LEBANON ROAD - Suite 700 WOODRIDGE, IL 60517 Phone: 630-427-2051 Fax: 630-427-1006 E-Mail: eng@dryssystemstech.com | | DESCRIPTION CUMMINS 8.3 TCPMEW | | REVISED ONE | | | | | |
| SCALE FULL | | DATE May 9, 2007 | | DRAWN BY Nasir Imitiaz | | CHECKED BY Roger Gibbs | | | |
| REVISIONS See Detail Drawings | | PROJECT M250-105-21 | | | | | | | |