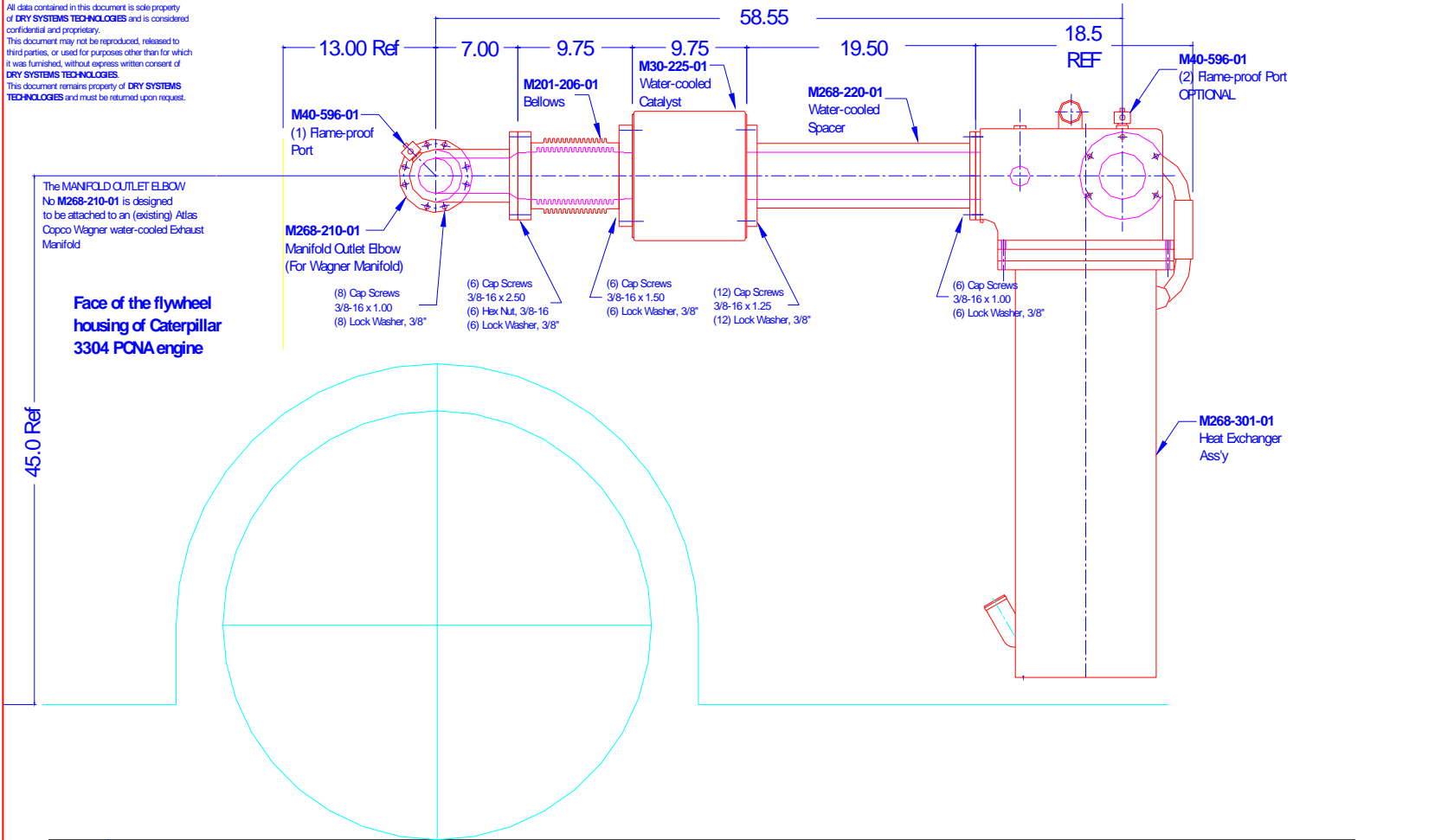


**CONFIDENTIAL & PROPRIETARY**

All data contained in this document is sole property of DRY SYSTEMS TECHNOLOGIES and is considered confidential and proprietary. This document may not be reproduced, released to third parties, or used for purposes other than for which it was furnished, without express written consent of DRY SYSTEMS TECHNOLOGIES. This document remains property of DRY SYSTEMS TECHNOLOGIES and must be returned upon request.



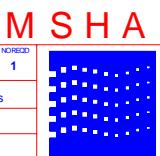
**WAGNER UT-45**  
**WAGNER ST-2**

TOLERANCES	
Linear unless noted	
Machined: ± 0.005	
Fabricated: ± 0.02	
Angular: ± 1/2°	
Surface finish 125	

DO NOT CHANGE WITHOUT PRIOR APPROVAL FROM MSHA

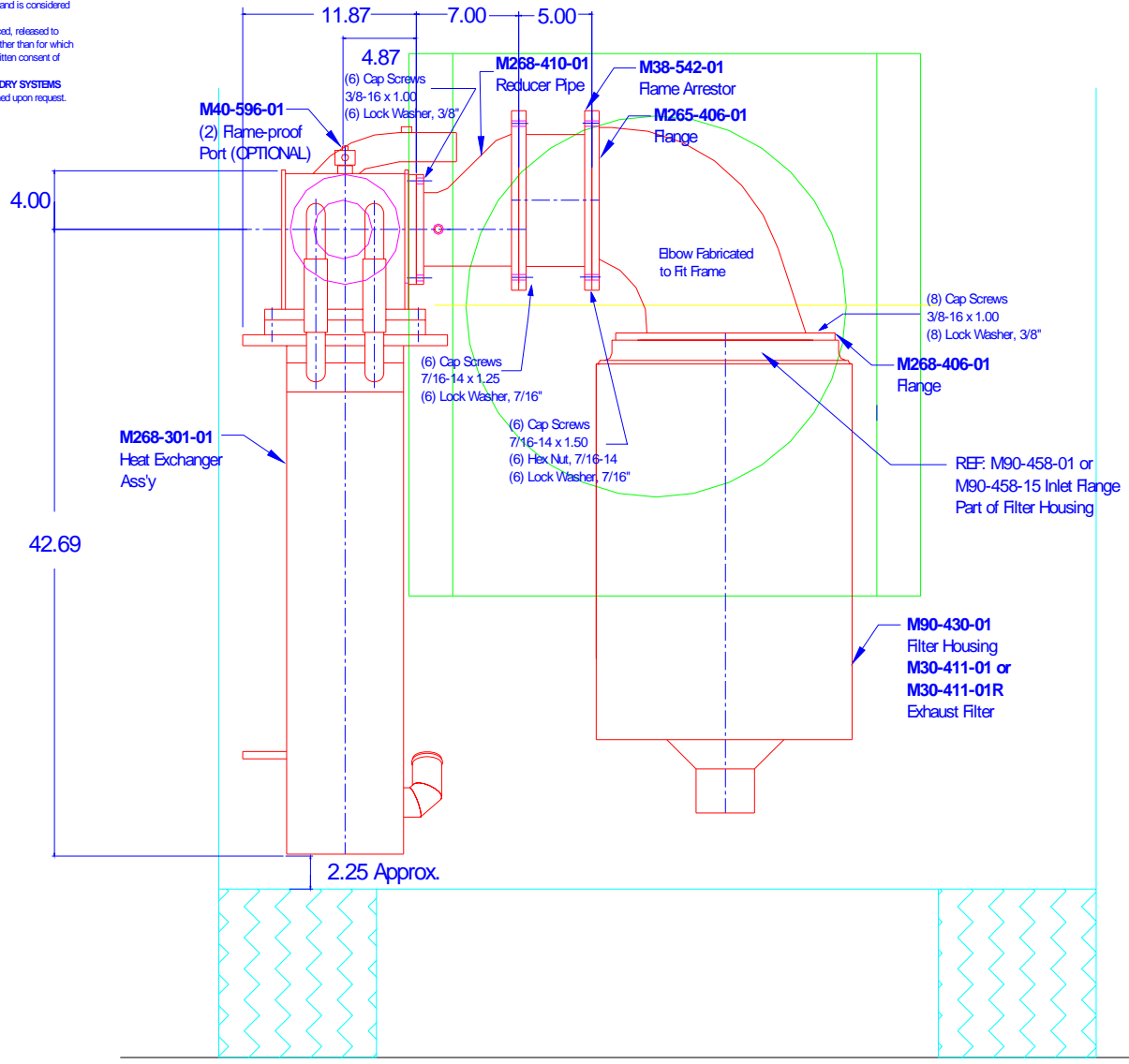
**DRY SYSTEMS TECHNOLOGIES**  
8102 LEMONT ROAD, SUITE 700  
WOODRIDGE, IL 60517  
Phone: 630-427-2051 Fax: 630-427-1036  
E-Mail: eng@dryssystemstech.com

DESCRIPTION	SCALE	DATE	DESIGNER	APPROVED BY	REVISION
<b>SIDEVIEW (Frame)</b>	FULL	12 February 2003	Norbert Paas		1
See Detail Drawings					
<b>M268-100-19</b>					



**CONFIDENTIAL & PROPRIETARY**

All data contained in this document is sole property of DRY SYSTEMS TECHNOLOGIES and is considered confidential and proprietary. This document may not be reproduced, released to third parties, or used for purposes other than for which it was furnished, without express written consent of DRY SYSTEMS TECHNOLOGIES. This document remains property of DRY SYSTEMS TECHNOLOGIES and must be returned upon request.



**WAGNER UT-45**  
**WAGNER ST-2**

DO NOT CHANGE WITHOUT PRIOR APPROVAL FROM MSHA **M S**

<b>TOLERANCES</b>		<b>DRY SYSTEMS TECHNOLOGIES</b>		DESCRIPTION <b>ENDVIEW (From Front)</b>		INCHES <b>1</b>	
Linear unless noted		8102 LEMONT ROAD, SUITE 700		SCALE	DATE	DRAWN BY	APPROVED BY
Machined: ± 0.005		WOODRIDGE, IL 60517		FULL	4 February 2003	Norbert Pass	
Fabricated: ± 0.02		Phone: 630-427-2051 Fax: 630-427-1036		MATERIAL See Detail Drawings			
Angular: ± 1/2°		E-Mail: eng@drysystemstech.com		DRAWING NO. <b>M268-100-12</b>			
Surface finish 125		01	10-04	NP	Updated only (No changes)		
REV	DATE	NAME	DESCRIPTION				