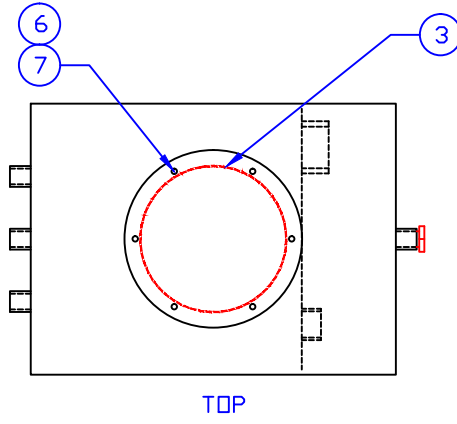
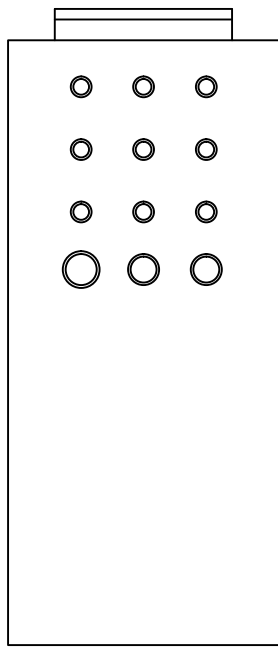


**CONFIDENTIAL & PROPRIETARY**

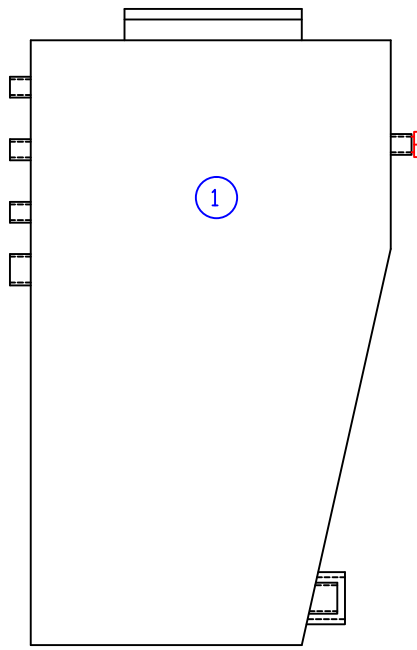
All data contained in this document is sole property of **DRY SYSTEMS TECHNOLOGIES** and is considered confidential and proprietary. This document may not be reproduced, released to third parties, or used for purposes other than for which it was furnished, without express written consent of **DRY SYSTEMS TECHNOLOGIES**. This document remains property of **DRY SYSTEMS TECHNOLOGIES** and must be returned upon request.



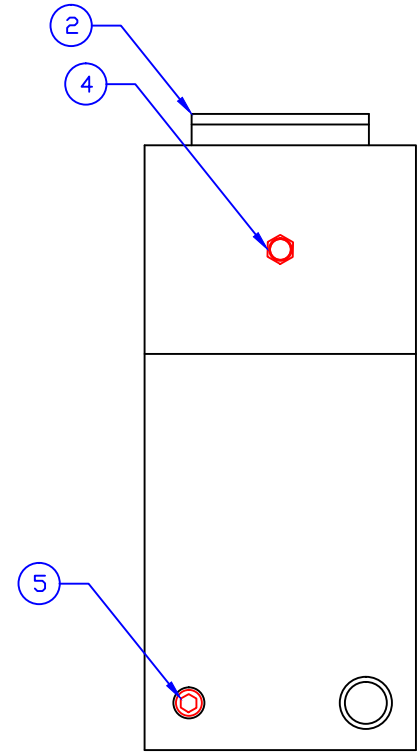
TOP



BACK



SIDE



FRONT

| ITEM | PART NUMBER  | QUAN. | DESCRIPTION                        |
|------|--------------|-------|------------------------------------|
|      | M387-201-01  | 1     | HYDRAULIC TANK ASSEMBLY, LEFT SIDE |
| 1    | M387-201-01W | 1     | WELDMNT, HYDRAULIC TANK, LEFT SIDE |
| 2    | M387-201-08B | 1     | COVER, HYDRAULIC TANK              |
| 3    | M387-519-01  | 1     | O-RING                             |
| 4    | M350-556-02  | 1     | WINDOW SIGHT GLASS                 |
| 5    | M511-550-01  | 1     | DRAIN PLUG                         |
| 6    | M515-500-02  | 6     | HEX HEAD CAPSCREW, 1/4-20 X 1, GR8 |
| 7    | M601-103-01  | 6     | LOCK WASHER, 1/4                   |

SECTION 1-02

| TOLERANCES          |  |
|---------------------|--|
| Linear unless noted |  |
| Machined: ±0.005    |  |
| Fabricated: ±0.02   |  |
| Angular: ±1/2°      |  |
| Surface finish 125  |  |

**DRY SYSTEMS TECHNOLOGIES**  
 10420 RISING COURT  
 WOODRIDGE, IL 60517  
 Phone: 630-427-2051 Fax: 630-427-1036  
 E-Mail: [eng@drysystemstech.com](mailto:eng@drysystemstech.com)

| DESCRIPTION                |             |          | NO RECD |
|----------------------------|-------------|----------|---------|
| HYDRAULIC TANK - LEFT SIDE |             |          | 1       |
| SCALE                      | DATE        | DRAWN BY |         |
| Full                       | DEC 20 2018 | W Fox    |         |
| MATERIAL                   | APPROVED BY |          |         |
| DRAWING NO                 | M387-201-01 |          |         |

