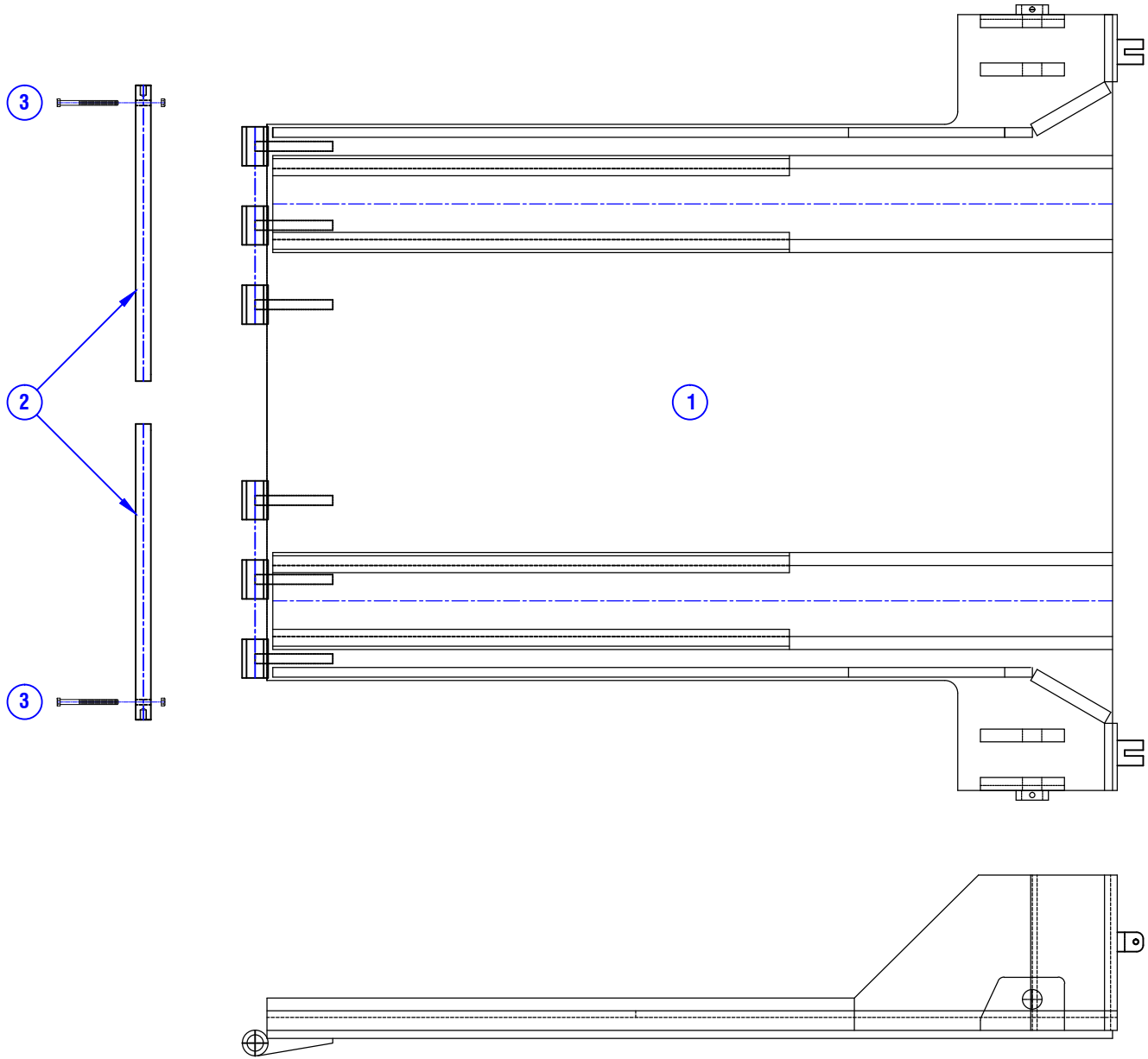


CONFIDENTIAL & PROPRIETARY

All data contained in this document is sole property of **DRY SYSTEMS TECHNOLOGIES** and is considered confidential and proprietary. This document may not be reproduced, released to third parties, or used for purposes other than for which it was furnished, without express written consent of **DRY SYSTEMS TECHNOLOGIES**. This document remains property of **DRY SYSTEMS TECHNOLOGIES** and must be returned upon request.



ITEM	PART NO.	QTY.	DESCRIPTION
1	M363-201-02	1	WELDMENT, SHIELD HAULER FLOOR
2	M363-211-02	2	ROD, HINGE
3	M515-500-26	2	ROD KEEPER BOLT - 3/4-10 X 6 GR 8 HHCS
	M515-560-04	2	3/4-10 TOP LOCK NUT

TOLERANCES Linear unless noted Machined: ±0.005 Fabricated: ±0.02 Angular: ±1/2° Surface finish 125			DRY SYSTEMS TECHNOLOGIES 10420 RISING COURT WOODRIDGE, IL 60517 Phone: 630-427-2051 Fax: 630-427-1036 E-Mail: eng@drysystemstech.com	DESCRIPTION	NO RECD	
				SHIELD HAULER FLOOR	1	
				SCALE	DATE	DRAWN BY
				Full	Oct 01 2019	W Fox
				MATERIAL	APPROVED BY	
			DRAWING NO	SECTION 1-03		

