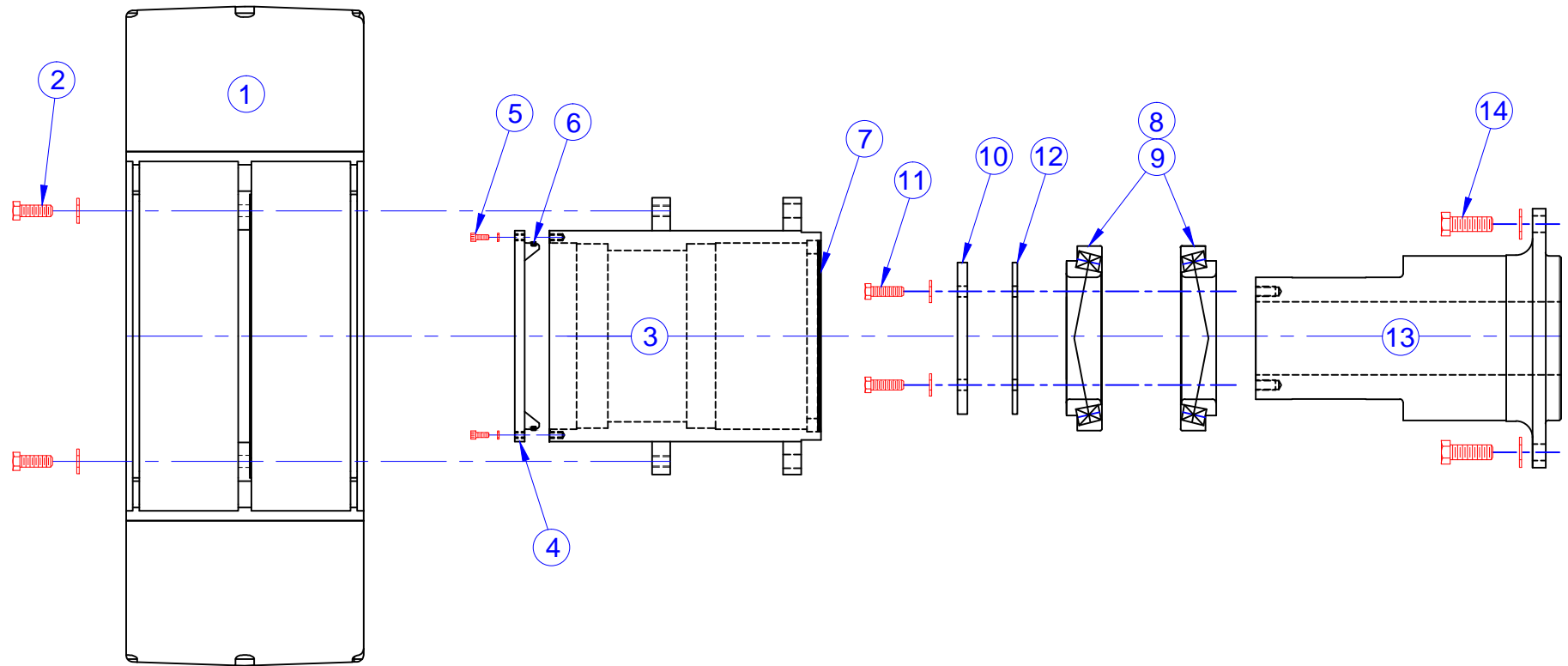
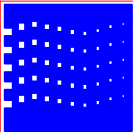


All data contained in this document is sole property of **DRY SYSTEMS TECHNOLOGIES** and is considered confidential and proprietary. This document may not be reproduced, released to third parties, or used for purposes other than for which it was furnished, without express written consent of **DRY SYSTEMS TECHNOLOGIES**. This document remains property of **DRY SYSTEMS TECHNOLOGIES** and must be returned upon request.



|   |            |              |             |             |   |             |                        |  |          |  |
|---|------------|--------------|-------------|-------------|---|-------------|------------------------|--|----------|--|
| <b>TOLERANCES</b><br>Linear unless noted<br>Machined: ±0.005<br>Fabricated: ±0.02<br>Angular: ±1/2°<br>Surface finish 125 |            |              |             |             | <b>DRY SYSTEMS TECHNOLOGIES</b><br>10420 RISING COURT<br>WOODRIDGE, IL 60517<br>Phone: 630-427-2051 Fax: 630-427-1036<br>E-Mail: eng@drysystechnology.com | DESCRIPTION | SPINDLE - HUB ASSEMBLY |  | NO REQ'D |  |
|   | SCALE      | FULL         | DATE        | Oct 01 2019 |   | DRAWN BY    | WEF                    |  |          |  |
|   | MATERIAL   |              | APPROVED BY |             |   |             |                        |  |          |  |
|   | DRAWING NO | SECTION 1-04 |             |             |   |             |                        |  |          |  |
|   | REV        | DATE         | NAME        | DESCRIPTION |   |             |                        |  |          |  |



**SPINDLE & HUB ASSEMBLY**

| ITEM | PART NUMBER | QUAN. | DESCRIPTION                                | Notes              |
|------|-------------|-------|--|--------------------|
| 1    | M348-526-01 | 1     | Tire & Wheel Assembly                      |                    |
| 2    | M600-163-01 | 18    | 7/8-14 X 2 1/2 GR8 HEX HEAD CAP SCREW      | Torque 525 ft lbs  |
|      | M503-555-01 | 18    | 7/8 SAE FLAT WASHERS                       |                    |
| 3    | M348-204-01 | 1     | WHEEL HUB                                  |                    |
| 4    | M348-204-02 | 1     | CAP, WHEEL HUB                             |                    |
| 5    | M503-507-01 | 8     | 3/8-16 X 1 GR8 SOCKET HEAD CAP SCREWS      | Torque 44 ft lbs   |
|      | M150-538-01 | 8     | 3/8 HI-COLLAR LOCK WASHERS                 |                    |
| 6    | M348-512-01 | 1     | O-RING, CAP, WHEEL HUB                     |                    |
| 7    | M348-513-01 | 1     | GREASE SEAL, WHEEL HUB                     |                    |
| 8    | M348-508-01 | 2     | BEARING CUP, WHEEL HUB                     |                    |
| 9    | M348-509-01 | 2     | BEARING CONE, WHEEL HUB                    |                    |
| 10   | M348-205-02 | 1     | CAP, SPINDLE                               |                    |
| 11   | M330-509-08 | 8     | 3/4-10 X 2 1/2 GR8 HEX HEAD CAP SCREWS     | Torque 300 ft lbs  |
|      | M510-536-03 | 8     | 3/4 SAE FLAT WASHERS                       |                    |
| 12   | M348-541-01 | 2     | SHIMS .005                                 |                    |
|      | M348-542-01 | 2     | SHIMS .010                                 |                    |
|      | M348-543-01 | 2     | SHIMS .020                                 |                    |
|      | M348-544-01 | 4     | SHIMS .040                                 |                    |
| 13   | M348-205-01 | 1     | WHEEL SPINDLE                              |                    |
| 14   | M515-500-30 | 18    | 1 1/8 - 12 X 3 1/4 GR8 HEX HEAD CAP SCREWS | Torque 1100 ft lbs |
|      | M515-530-06 | 18    | 1 1/8 SAE FLAT WASHERS                     |                    |

**NOTE: ALL QUANTITIES NOTED ARE FOR ONE SPINDLE & HUB ASSEMBLY ONLY**