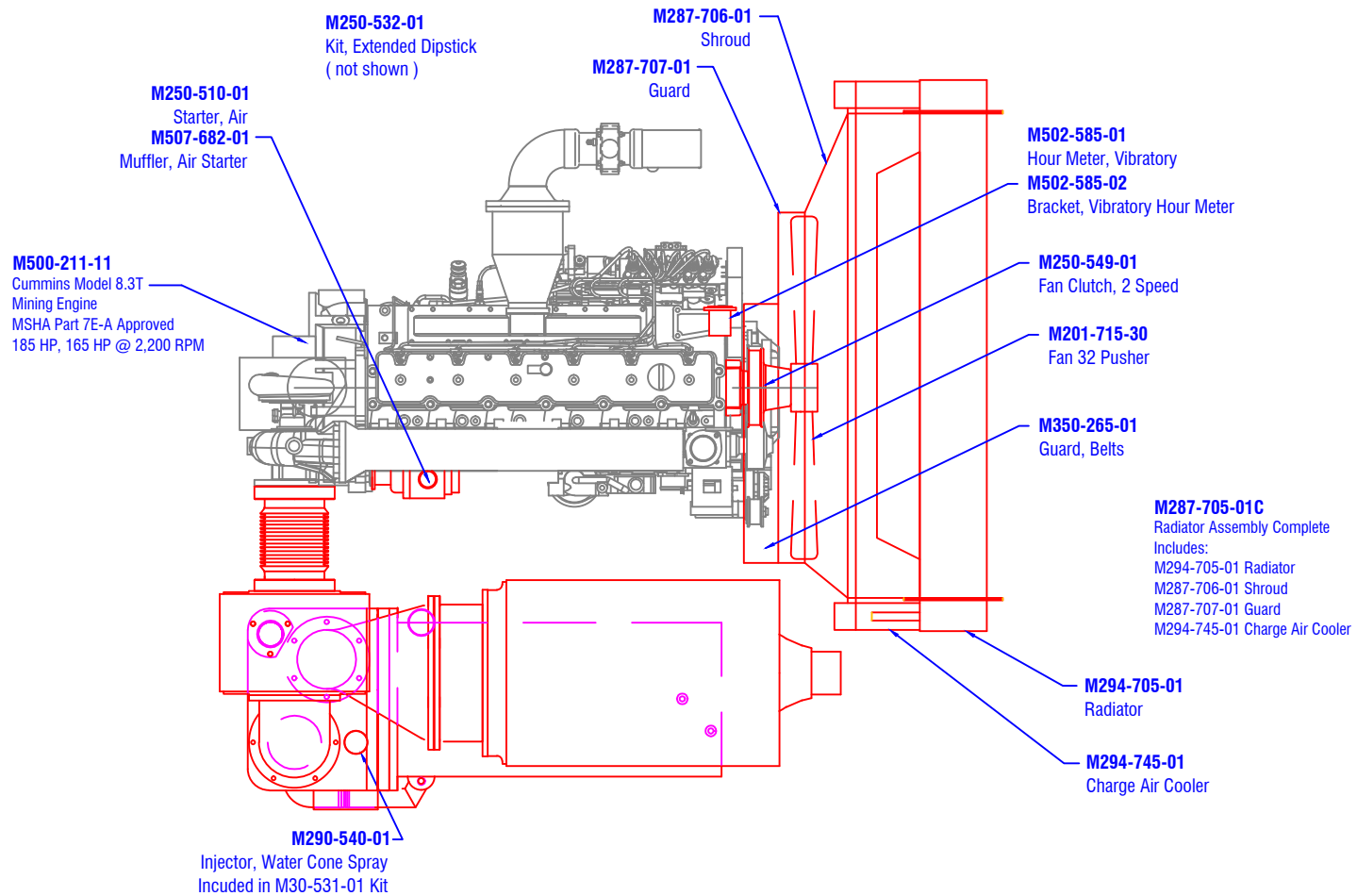


**CONFIDENTIAL & PROPRIETARY**

All data contained in this document is sole property of **DRY SYSTEMS TECHNOLOGIES** and is considered confidential and proprietary.

This document may not be reproduced, released to third parties, or used for purposes other than for which it was furnished, without express written consent of **DRY SYSTEMS TECHNOLOGIES**.

This document remains property of **DRY SYSTEMS TECHNOLOGIES** and must be returned upon request.

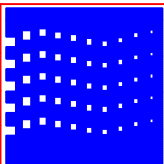


**TOLERANCES**  
Linear unless noted  
Machined: ±0.005  
Fabricated: ±0.02  
Angular: ±1/2°  
Surface finish 125

REV	DATE	NAME	DESCRIPTION

**DRY SYSTEMS TECHNOLOGIES**  
8102 LEMONT ROAD, SUITE 700  
WOODRIDGE, IL 60517  
Phone: 630-427-2051 Fax: 630-427-1036  
E-Mail: eng@drysystemstech.com

DESCRIPTION DST TOPVIEW - 35S		NO RECD
SCALE FULL	DATE Feb 24 2015	DRAWN BY Ward Fox
MATERIAL See Detail Drawings		APPROVED BY
DRAWING NO <b>SECTION 2-02 #1</b>		

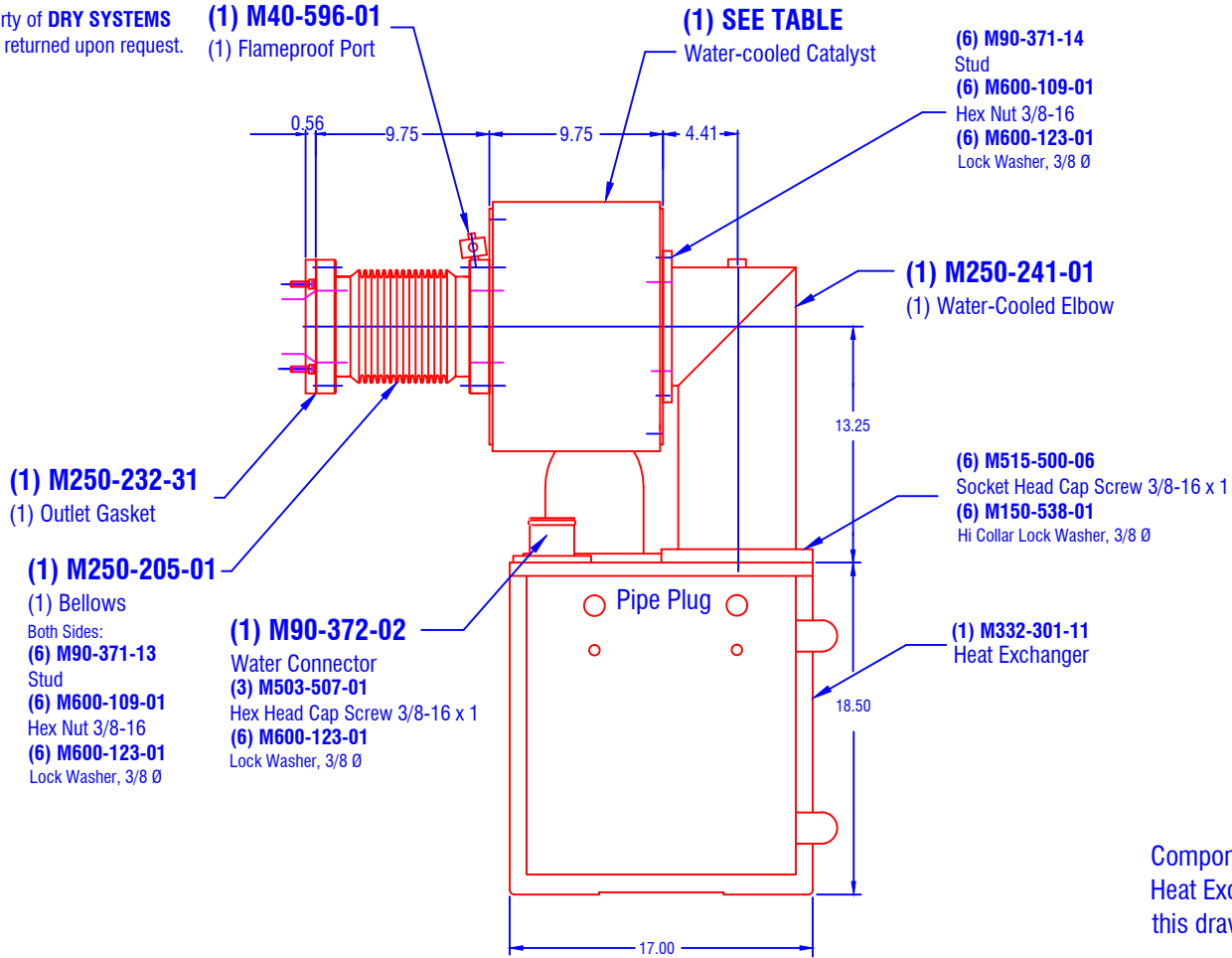


**CONFIDENTIAL & PROPRIETARY**

All data contained in this document is sole property of **DRY SYSTEMS TECHNOLOGIES** and is considered confidential and proprietary.

This document may not be reproduced, released to third parties, or used for purposes other than for which it was furnished, without express written consent of **DRY SYSTEMS TECHNOLOGIES**.

This document remains property of **DRY SYSTEMS TECHNOLOGIES** and must be returned upon request.



Components downstream of the Heat Exchanger are not shown in this drawing

The Cummins Diesel Engine, Water-cooled Exhaust Manifold and Water-cooled Turbo-charger are not shown in this view

HP	VENT RATE	CATALYST
185 HP	13,500 CFM	M90-218-02
185 HP	10,000 CFM	M250-260-01
165 HP	9,000 CFM	M250-260-01

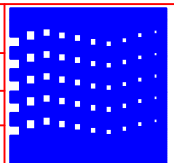
**Cummins 8.3 Turbo**

TOLERANCES	
Linear unless noted	
Machined: ±0.005	
Fabricated: ±0.02	
Angular: ±1/2°	
Surface finish 125	

**DRY SYSTEMS TECHNOLOGIES**

8102 LEMONT ROAD, SUITE 700  
WOODRIDGE, IL 60517  
Phone: 630-427-2051 Fax: 630-427-1036  
E-Mail: eng@drysystemstech.com

DESCRIPTION		NO RECD
DST EXHAUST ENDVIEW - 35S		
SCALE	DATE	DRAWN BY
FULL	Feb 24 2015	Ward Fox
MATERIAL	APPROVED BY	
See Detail Drawings		
DRAWING NO		
<b>SECTION 2-02 #2</b>		

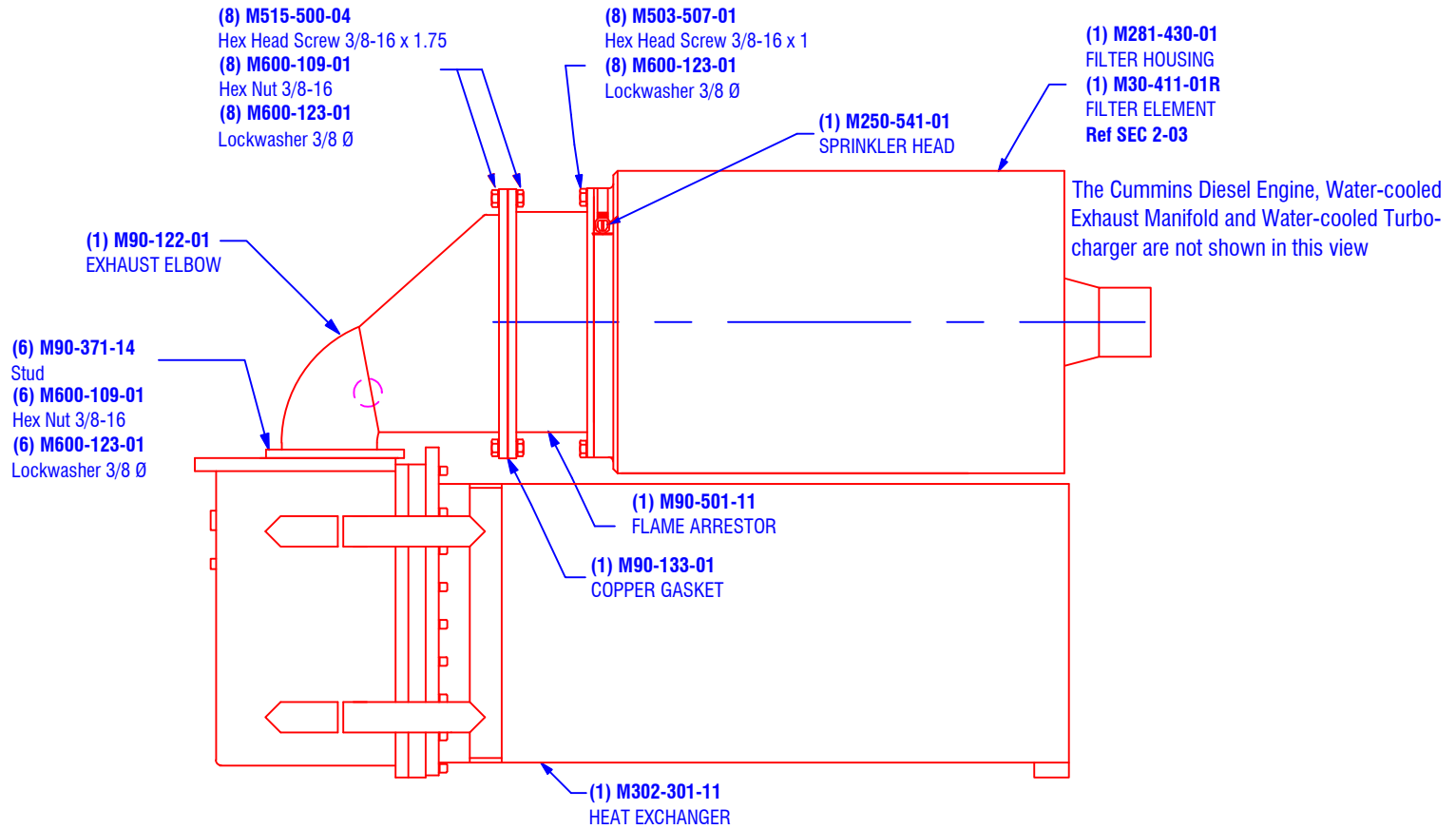


**CONFIDENTIAL & PROPRIETARY**

All data contained in this document is sole property of **DRY SYSTEMS TECHNOLOGIES** and is considered confidential and proprietary.

This document may not be reproduced, released to third parties, or used for purposes other than for which it was furnished, without express written consent of **DRY SYSTEMS TECHNOLOGIES**.

This document remains property of **DRY SYSTEMS TECHNOLOGIES** and must be returned upon request.



Components upstream of the Heat Exchanger are not shown in this drawing

**Cummins 8.3 Turbo**

TOLERANCES			
Linear unless noted			
Machined: ±0.005			
Fabricated: ±0.02			
Angular: ±1/2°			
Surface finish 125			
REV	DATE	NAME	DESCRIPTION

**DRY SYSTEMS TECHNOLOGIES**  
 8102 LEMONT ROAD, SUITE 700  
 WOODRIDGE, IL 60517  
 Phone: 630-427-2051 Fax: 630-427-1036  
 E-Mail: eng@drysistemstech.com

DESCRIPTION		NO RECD
DST EXHAUST SIDEVIEW - 35S		
SCALE	DATE	DRAWN BY
FULL	Feb 24 2015	Ward Fox
MATERIAL	APPROVED BY	
See Detail Drawings		
DRAWING NO		
<b>SECTION 2-02 #3</b>		

