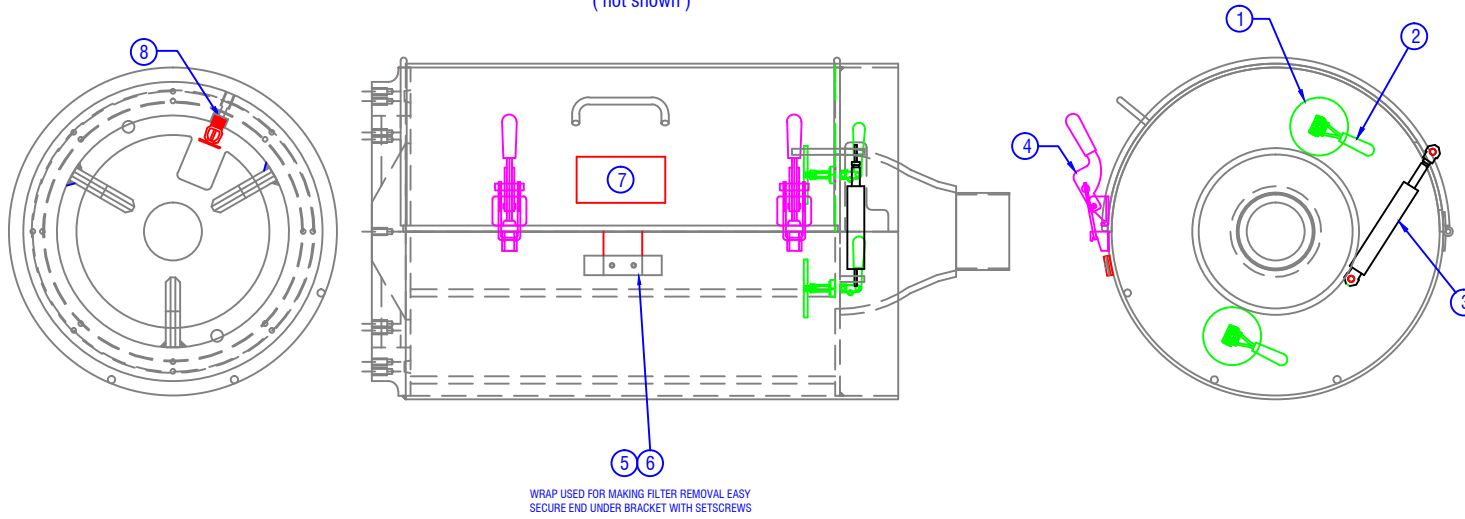


**CONFIDENTIAL & PROPRIETARY**

All data contained in this document is sole property of DRY SYSTEMS TECHNOLOGIES and is considered confidential and proprietary.  
 This document may not be reproduced, released to third parties, or used for purposes other than for which it was furnished, without express written consent of DRY SYSTEMS TECHNOLOGIES.  
 This document remains property of DRY SYSTEMS TECHNOLOGIES and must be returned upon request.

M30-411-01R  
 Filter Element  
 ( not shown )



Item No	Qty.	PART NUMBER	DESCRIPTION
	1	M281-430-01	16" Filter Housing - Includes 1 - 7
1	2	M281-433-21	Retainer Pad
2	2	M281-430-21	Reverse Action Handle
3	1	M90-432-01	Lid Lift Cylinder
4	2	M90-431-01	Latch
5	2		Setscrew, 0.25-28x0.50"
6	60"	M500-222-01	Wrap, 2" Wide Exhaust
7	1	M350-657-04	Decal - DST Filter Housing
8	1	M250-541-01	Sprinkler Head - Sold Separately

**SECTION 2-03**

**TOLERANCES**

Linear unless noted  
 Machined: ±0.005  
 Fabricated: ±0.02  
 Angular: ±1/2°  
 Surface finish 125

REV	DATE	BY	DESCRIPTION

**DRY SYSTEMS TECHNOLOGIES**

8102 LEMONT ROAD, SUITE 700  
 WOODRIDGE, IL 60517  
 Phone: 630-427-2651 Fax: 630-427-1036  
 E-Mail: [eng@dryssystemstech.com](mailto:eng@dryssystemstech.com)

DESCRIPTION	REV	DATE	APPROVED BY	NO. REQD
16" Filter Housing	1	May 12 2015	WFFox	1
GENERAL			APPROVED BY	
ISSUED TO				

**M281-430-01**

