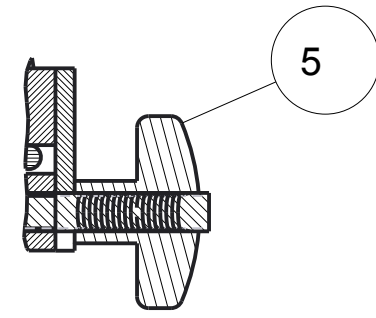


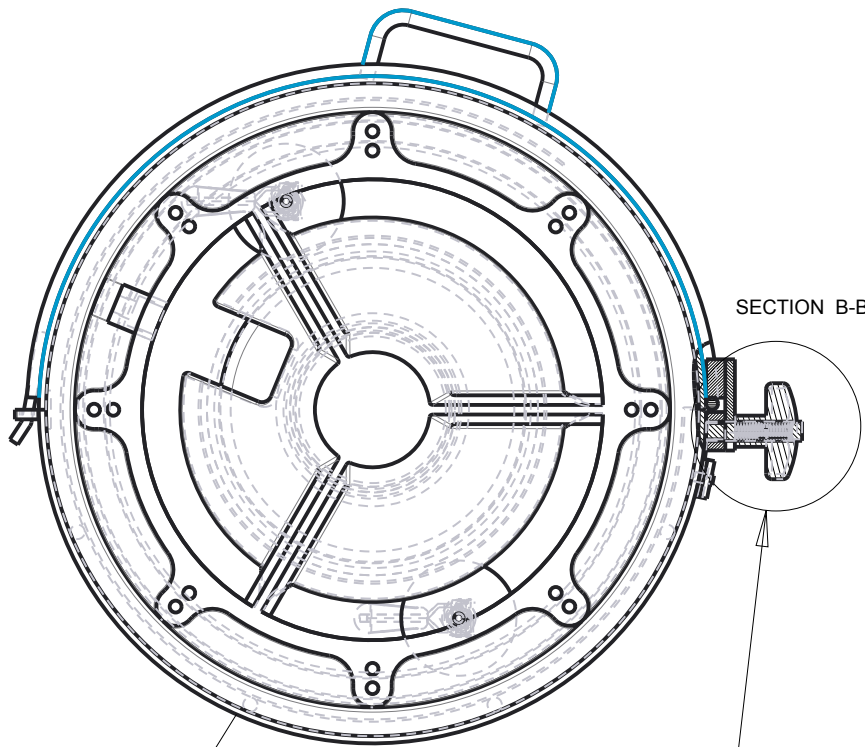
CONFIDENTIAL & PROPRIETARY
 All data contained in this document is sole property
 of DRY SYSTEMS TECHNOLOGIES and is considered
 confidential and proprietary.
 This document may not be reproduced, released to
 third parties, or used for purposes other than for which
 it was furnished, without express written consent of
 DRY SYSTEMS TECHNOLOGIES.
 This document remains property of DRY SYSTEMS
 TECHNOLOGIES and must be returned upon request.

NOTE:

- 1) INSERT BENT TABS INTO SLOTTED TABS AS SHOWN
- 2) CLOSE LID ALLOWING THE CLEVIS TABS TO REST ON THE STUDS
- 3) ASSEMBLE KNOB TO SECURE LID

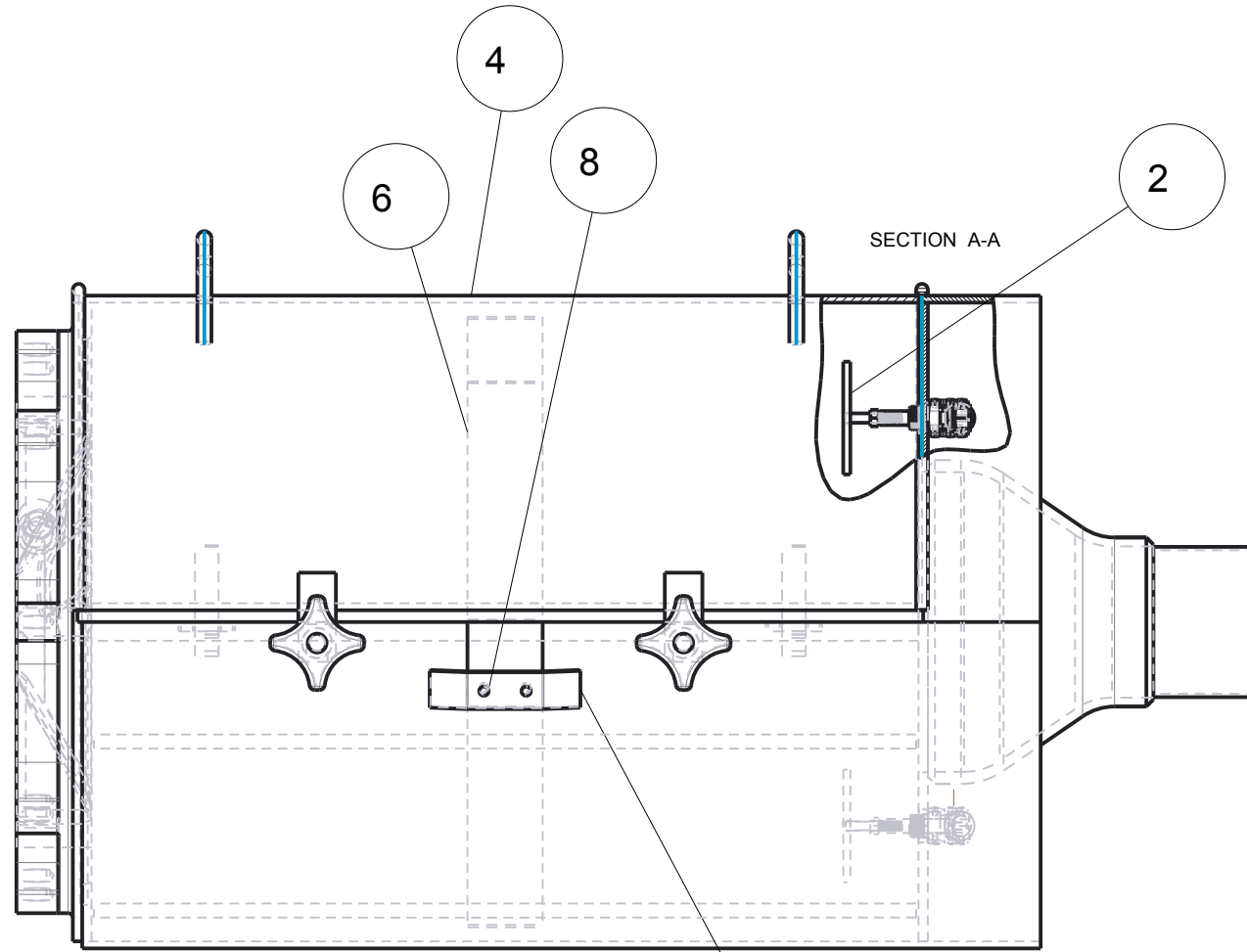


DETAIL A
 SCALE 0.400

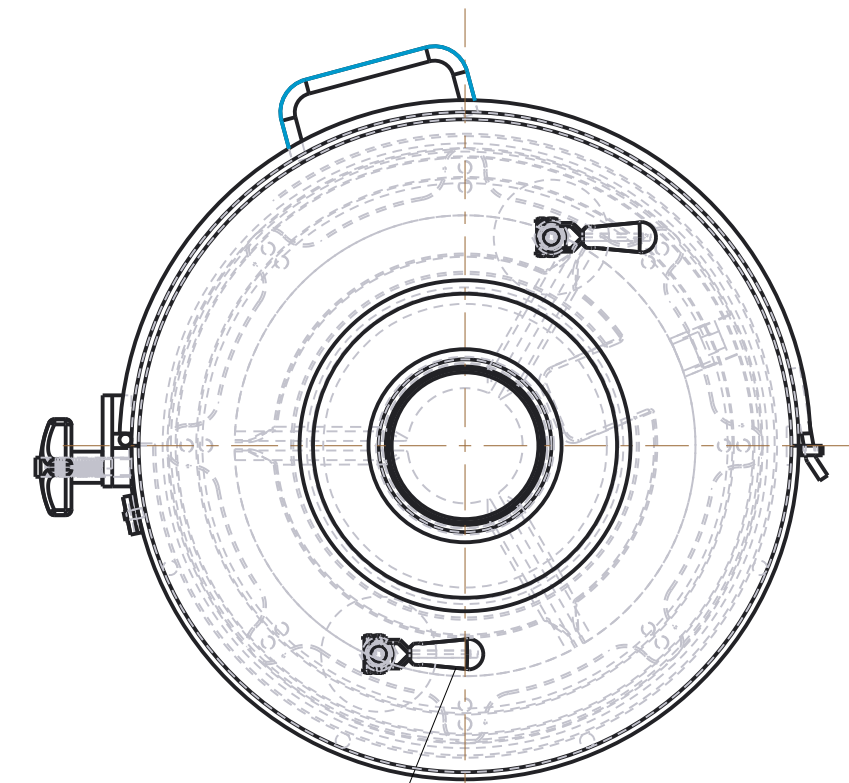


SECTION B-B

SEE DETAIL A



SECTION A-A



SCALE 0.063

8	SCREW_SET_250-28X0500	Screw, Set - 0.25-28x0.50	2
7	M90-462-01	Bracket, Filter Strap	1
6	M500-222-01_	Wrap, 2" Wide Exhaust	1
5	M310-426-01	Knob, 1/2-13 Thd'd Hand	2
4	M281-441-02	Lid Weldment (Bolt-on)	1
3	M281-434-02	Housing, weldment 16" filter (Bolt-on)	1
2	M281-433-21	Pad, retainer	2
1	M281-430-21	Handle, reverse action	2
ITEM	PART NUMBER	DESCRIPTION	QTY

TOLERANCES
 Linear unless noted
 Machined: ± 0.005
 Fabricated: ± 0.01
 Angular: $\pm 1/2^\circ$
 Surface finish 125
 Third angle projection

REV	DATE	NAME	DESCRIPTION
1	7/16	JDF	Updated to model rev level

DRY SYSTEMS TECHNOLOGIES
 10420 RISING COURT
 WOODRIDGE, IL 60517
 Phone: 630-427-2051
 Fax: 630-427-1036
 E-Mail: eng@drysystemstech.com

Description: Housing, 16" Filter (Bolt-on)		No. Rept:
Scale: 0.200	Date: 10/13/2015	Drawn By: JDF
Material: See BOM		Approved By:
Drawing No. M281-430-03		Sheet

