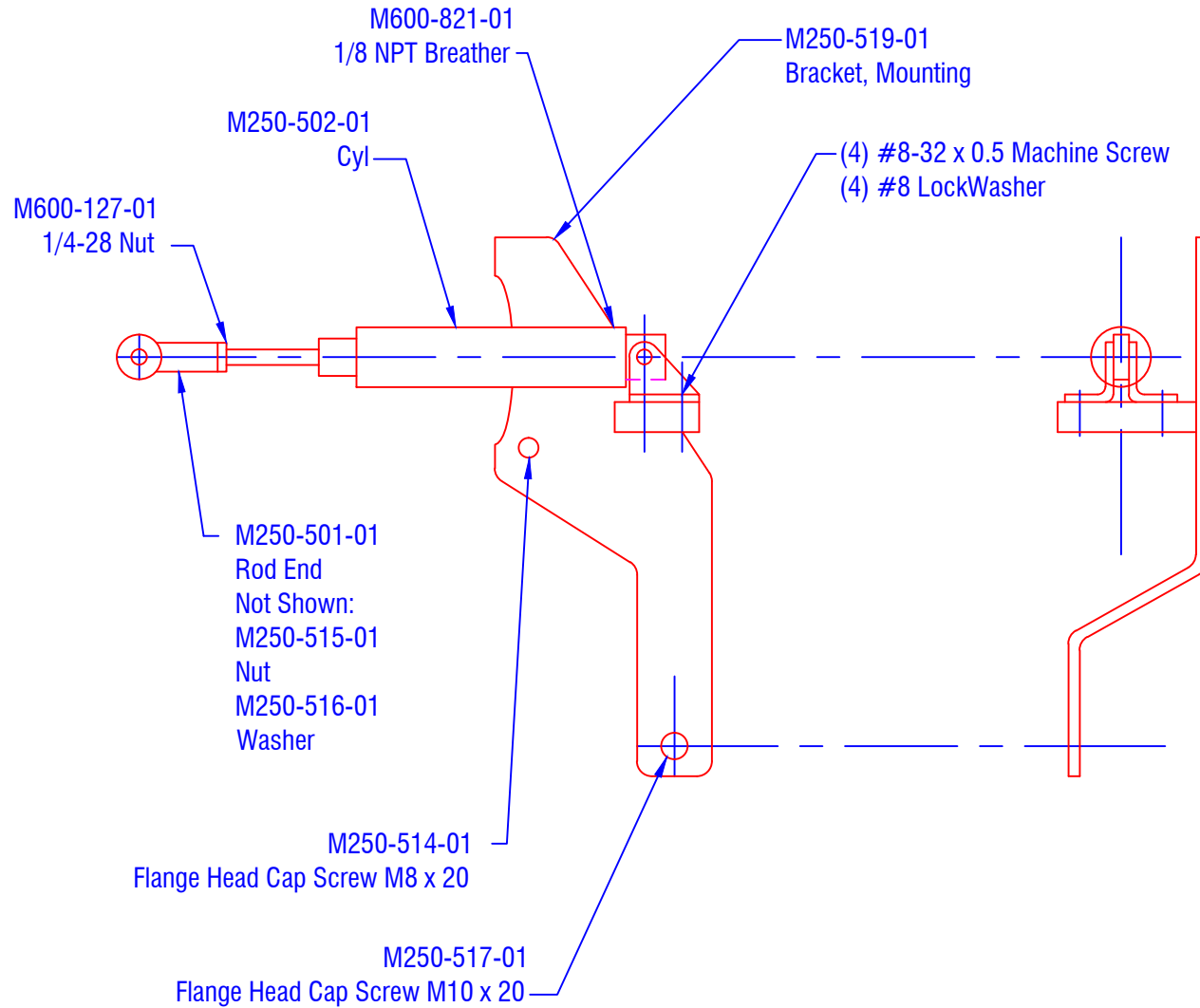


CONFIDENTIAL & PROPRIETARY

All data contained in this document is sole property of **DRY SYSTEMS TECHNOLOGIES** and is considered confidential and proprietary.
 This document may not be reproduced, released to third parties, or used for purposes other than for which it was furnished, without express written consent of **DRY SYSTEMS TECHNOLOGIES**.
 This document remains property of **DRY SYSTEMS TECHNOLOGIES** and must be returned upon request.



TOLERANCES	
Linear unless noted	
Machined: ±0.005	
Fabricated: ±0.01	
Angular: ±1/2°	
Surface finish 125	

REV	DATE	BY	CHKD	DESCRIPTION

DRY SYSTEMS TECHNOLOGIES
 8102 LEMONT ROAD, SUITE 700
 WOODRIDGE, IL 60517
 Phone: 630-427-2051 Fax: 630-427-1036
 E-Mail: eng@drysystemstech.com

DESCRIPTION		NO	REQD
FUEL SHUT-OFF ASS'Y		1	
SCALE	DATE	DRAWN BY	
NONE	2 May 05	R Gibbs	
MATERIAL		APPROVED BY	
See Detail Drawings			
DRAWING NO		M250-106-01	

