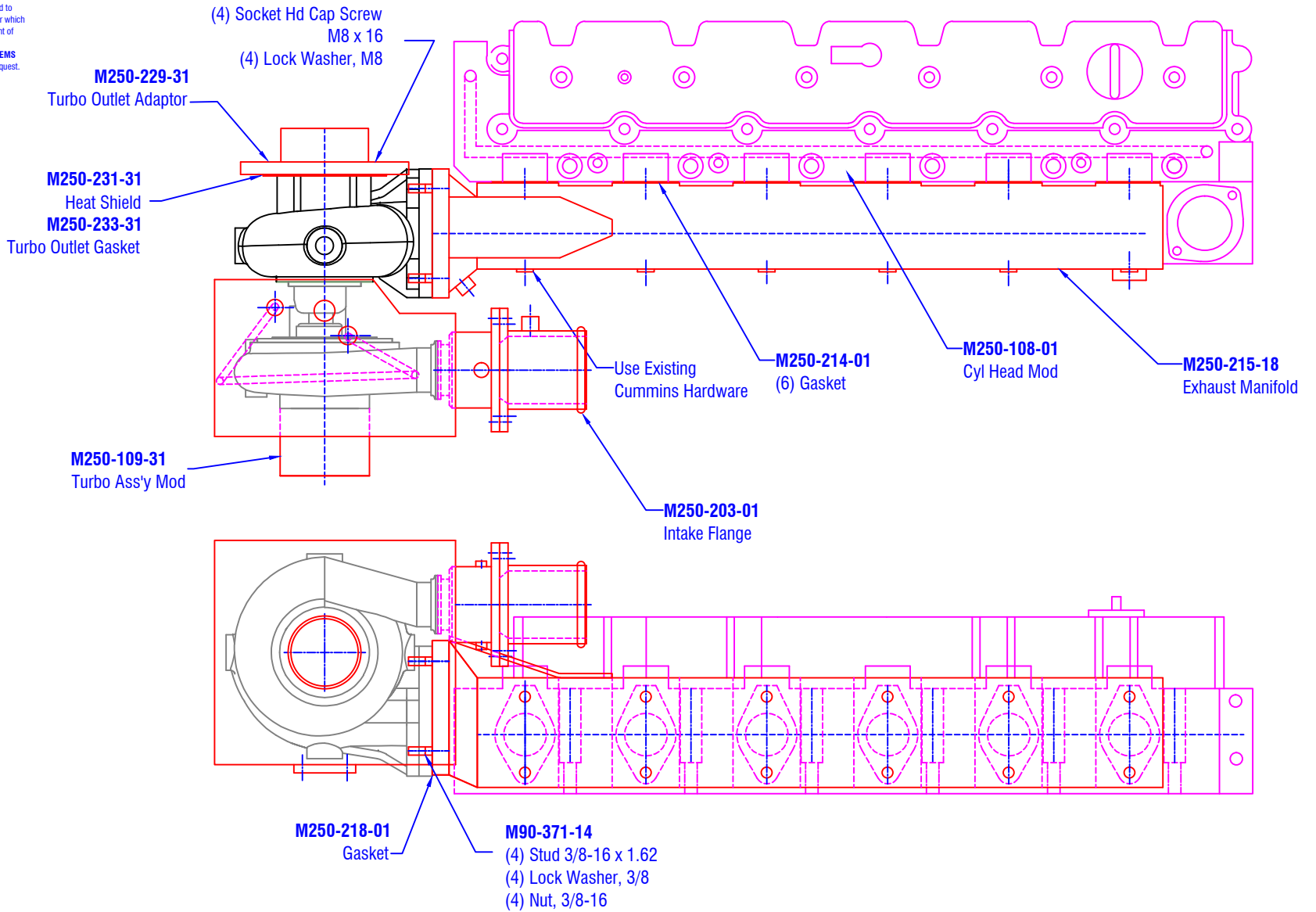


**CONFIDENTIAL & PROPRIETARY**  
 All data contained in this document is sole property of **DRY SYSTEMS TECHNOLOGIES** and is considered confidential and proprietary. This document may not be reproduced, released to third parties, or used for purposes other than for which it was furnished, without express written consent of **DRY SYSTEMS TECHNOLOGIES**. This document remains property of **DRY SYSTEMS TECHNOLOGIES** and must be returned upon request.



CUMMINS 8.3 MODIFICATION  
 For Part 7

TOLERANCES	
Linear unless noted	
Machined: ±0.005	
Fabricated: ±0.01	
Angular: ±1/2°	
Surface finish 125	

REV	DATE	NAME	DESCRIPTION

**DRY SYSTEMS TECHNOLOGIES**  
 8102 LEMONT ROAD, SUITE 700  
 WOODRIDGE, IL 60517  
 Phone: 630-427-2051 Fax: 630-427-1036  
 E-Mail: eng@dryssystemstech.com

DESCRIPTION		NO REQ'D	
EXHAUST MANIFOLD INSTALL			
SCALE	DATE	DRAWN BY	
FULL	11 Feb 2008	RGibbs	
MATERIAL		APPROVED BY	
DRAWING NO			
<b>M250-112-02</b>			

