

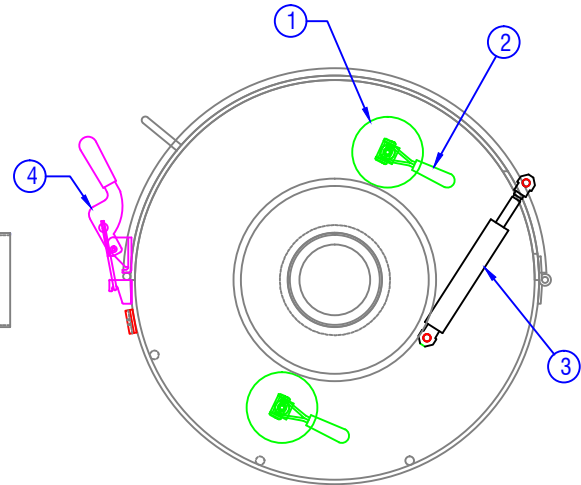
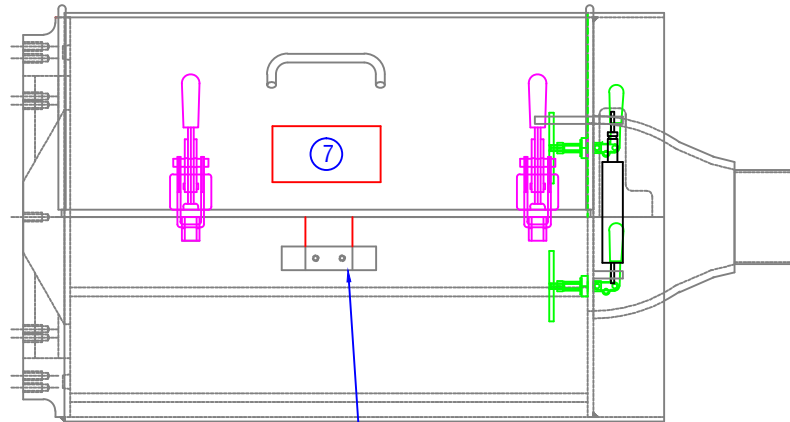
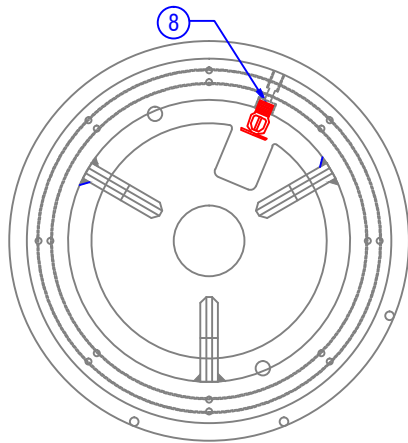
CONFIDENTIAL & PROPRIETARY

All data contained in this document is sole property of **DRY SYSTEMS TECHNOLOGIES** and is considered confidential and proprietary.

This document may not be reproduced, released to third parties, or used for purposes other than for which it was furnished, without express written consent of **DRY SYSTEMS TECHNOLOGIES**.

This document remains property of **DRY SYSTEMS TECHNOLOGIES** and must be returned upon request.

M30-411-01R
Filter Element
(not shown)



5 6

WRAP USED FOR MAKING FILTER REMOVAL EASY
SECURE END UNDER BRACKET WITH SETSCREWS

Item No	Q'ty.	PART NUMBER	DESCRIPTION
	1	M281-430-01	16" Filter Housing - Includes 1 - 7
1	2	M281-433-21	Retainer Pad
2	2	M281-430-21	Reverse Action Handle
3	1	M90-432-01	Lid Lift Cylinder
4	2	M90-431-01	Latch
5	2		Setscrew, 0.25-28x0.50"
6	60"	M500-222-01	Wrap, 2" Wide Exhaust
7	1	M350-657-04	Decal - DST Filter Housing
8	1	M250-541-01	Sprinker Head - Sold Separately

TOLERANCES

Linear unless noted
Machined: ±0.005
Fabricated: ±0.02
Angular: ± 1/2°
Surface finish 125

REV	DATE	NAME	DESCRIPTION

DRY SYSTEMS TECHNOLOGIES

8102 LEMONT ROAD, SUITE 700
WOODRIDGE, IL 60517
Phone: 630-427-2051 Fax: 630-427-1036
E-Mail: eng@dryssystemstech.com

DESCRIPTION	NO. RECD.
16" Filter Housing	1
SCALE: FULL	DATE: Sept 18 2018
DRAWN BY: WFox	APPROVED BY:
M281-430-01	

