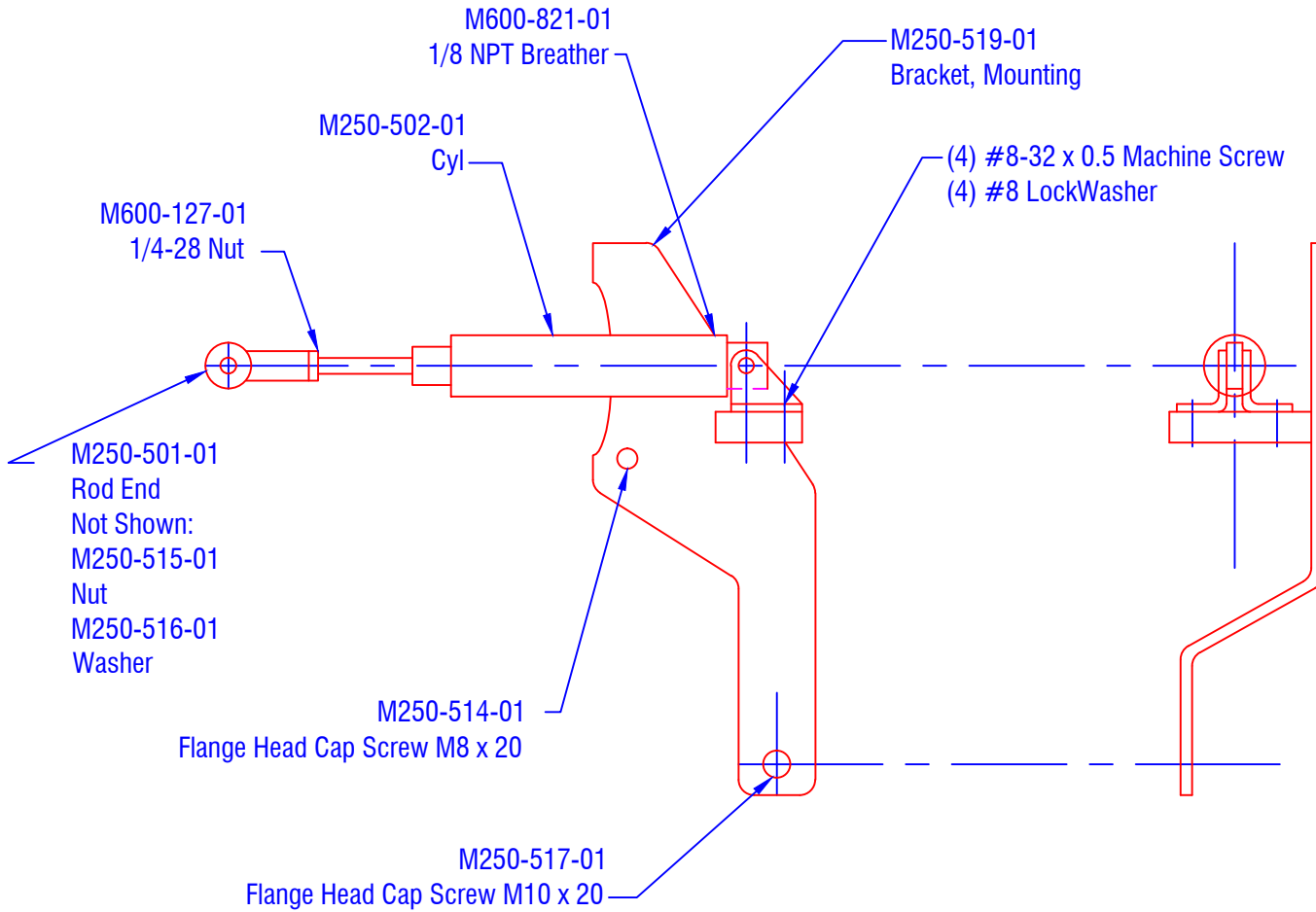


CONFIDENTIAL & PROPRIETARY

All data contained in this document is sole property of **DRY SYSTEMS TECHNOLOGIES** and is considered confidential and proprietary. This document may not be reproduced, released to third parties, or used for purposes other than for which it was furnished, without express written consent of **DRY SYSTEMS TECHNOLOGIES**. This document remains property of **DRY SYSTEMS TECHNOLOGIES** and must be returned upon request.



SECTION 2-07

TOLERANCES Linear unless noted Machined: ±0.005 Fabricated: ±0.01 Angular: ±1/2° Surface finish 125										
	DRY SYSTEMS TECHNOLOGIES		DESCRIPTION FUEL SHUT-OFF ASS'Y		NO. RECD 1					
	8102 LEMONT ROAD, SUITE 700 WOODRIDGE, IL 60517 Phone: 630-427-2051 Fax: 630-427-1036 E-Mail: eng@drysystemstech.com		SCALE NONE	DATE 2 May 05	DRAWN BY R Gibbs		APPROVED BY			
	See Detail Drawings		DRAWING NO. M250-106-01							
	REV. DATE NAME (DESCRIPTION)									