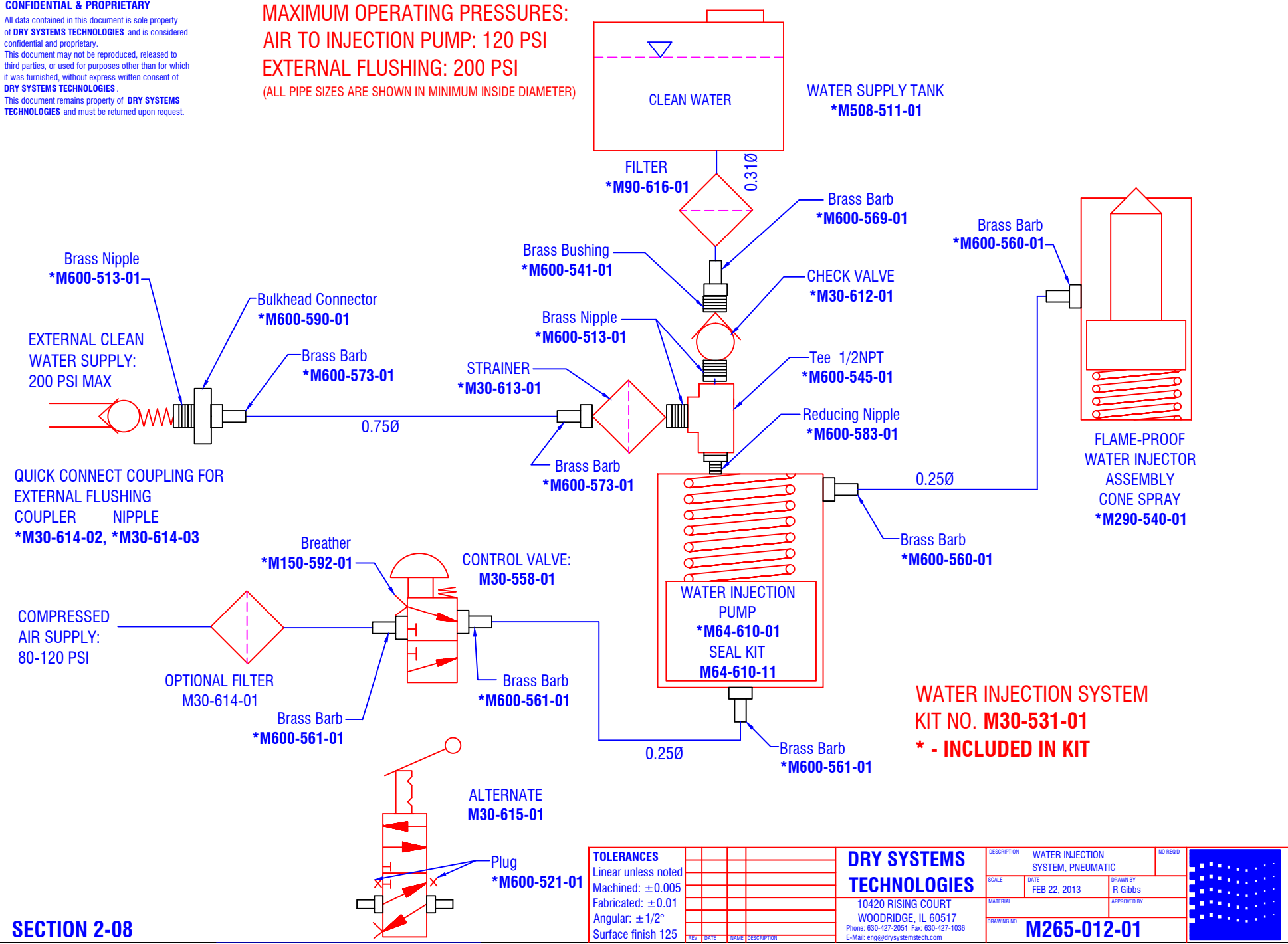


CONFIDENTIAL & PROPRIETARY

All data contained in this document is sole property of **DRY SYSTEMS TECHNOLOGIES** and is considered confidential and proprietary. This document may not be reproduced, released to third parties, or used for purposes other than for which it was furnished, without express written consent of **DRY SYSTEMS TECHNOLOGIES**. This document remains property of **DRY SYSTEMS TECHNOLOGIES** and must be returned upon request.

MAXIMUM OPERATING PRESSURES:
AIR TO INJECTION PUMP: 120 PSI
EXTERNAL FLUSHING: 200 PSI
 (ALL PIPE SIZES ARE SHOWN IN MINIMUM INSIDE DIAMETER)



WATER INJECTION SYSTEM
KIT NO. M30-531-01
*** - INCLUDED IN KIT**

SECTION 2-08

TOLERANCES		DRY SYSTEMS TECHNOLOGIES		DESCRIPTION	WATER INJECTION SYSTEM, PNEUMATIC	NO. REV'D	
Linear unless noted				SCALE		DRAWN BY	
Machined: ±0.005				DATE	FEB 22, 2013	R Gibbs	
Fabricated: ±0.01				MATERIAL		APPROVED BY	
Angular: ±1/2°				DRAWING NO.	M265-012-01		
Surface finish 125				10420 RISING COURT WOODRIDGE, IL 60517 Phone: 630-427-2051 Fax: 630-427-1036 E-Mail: eng@drysystemstech.com			