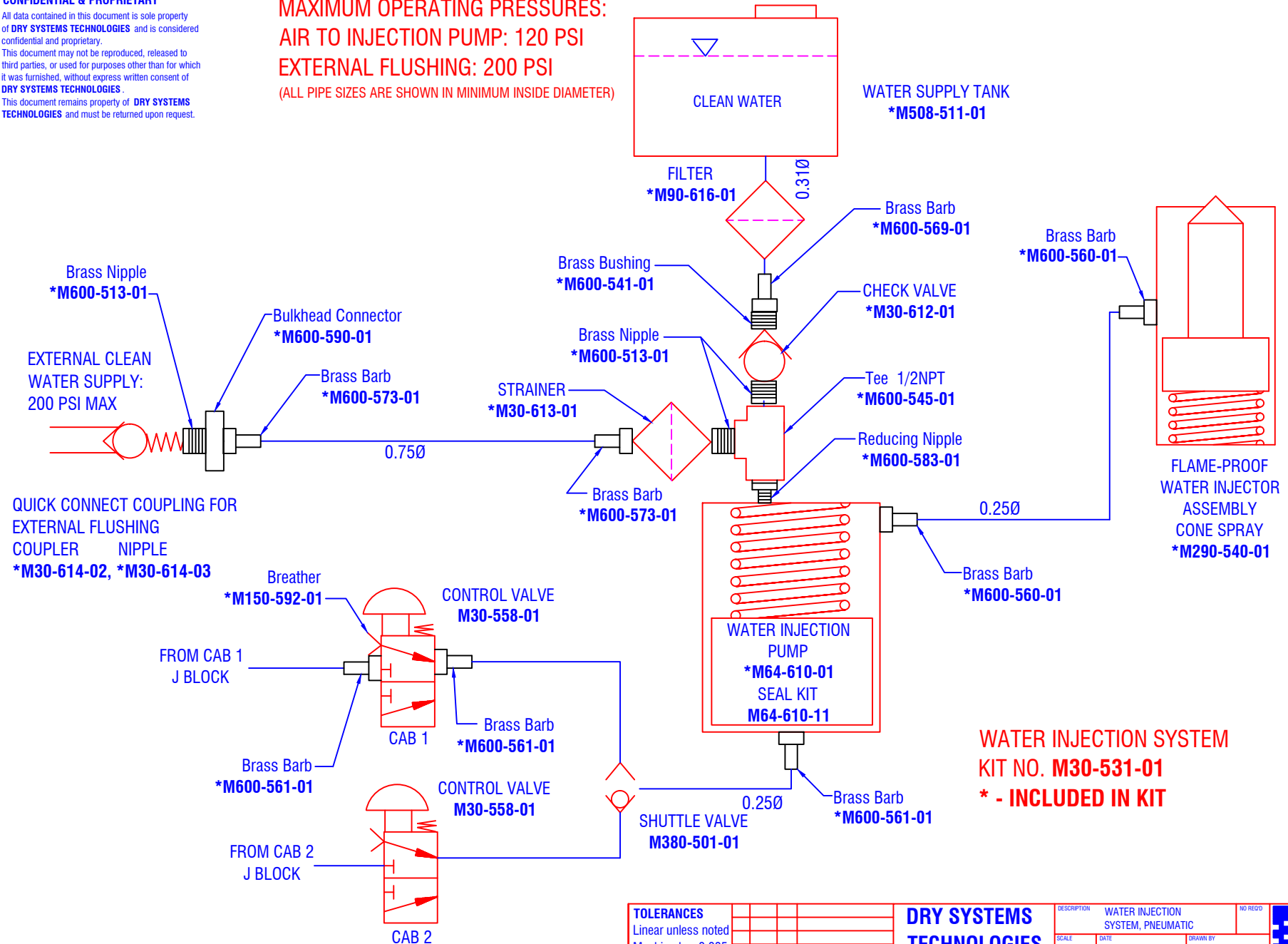


**CONFIDENTIAL & PROPRIETARY**

All data contained in this document is sole property of **DRY SYSTEMS TECHNOLOGIES** and is considered confidential and proprietary. This document may not be reproduced, released to third parties, or used for purposes other than for which it was furnished, without express written consent of **DRY SYSTEMS TECHNOLOGIES**. This document remains property of **DRY SYSTEMS TECHNOLOGIES** and must be returned upon request.

**MAXIMUM OPERATING PRESSURES:**  
**AIR TO INJECTION PUMP: 120 PSI**  
**EXTERNAL FLUSHING: 200 PSI**  
 (ALL PIPE SIZES ARE SHOWN IN MINIMUM INSIDE DIAMETER)



**WATER INJECTION SYSTEM**  
**KIT NO. M30-531-01**  
**\* - INCLUDED IN KIT**

**QUICK CONNECT COUPLING FOR EXTERNAL FLUSHING**  
 COUPLER NIPPLE  
**\*M30-614-02, \*M30-614-03**

**SECTION 2-08**

<b>TOLERANCES</b> Linear unless noted Machined: ±0.005 Fabricated: ±0.01 Angular: ±1/2° Surface finish 125			<b>DRY SYSTEMS TECHNOLOGIES</b> 10420 RISING COURT WOODRIDGE, IL 60517 Phone: 630-427-2051 Fax: 630-427-1036 E-Mail: eng@dryssystemstech.com	DESCRIPTION: WATER INJECTION SYSTEM, PNEUMATIC	NO REVD
	SCALE	DATE: Oct 5, 2017		DRAWN BY: R Gibbs	
	MATERIAL	APPROVED BY:			
	DRAWING NO:	<b>M380-002-01</b>			