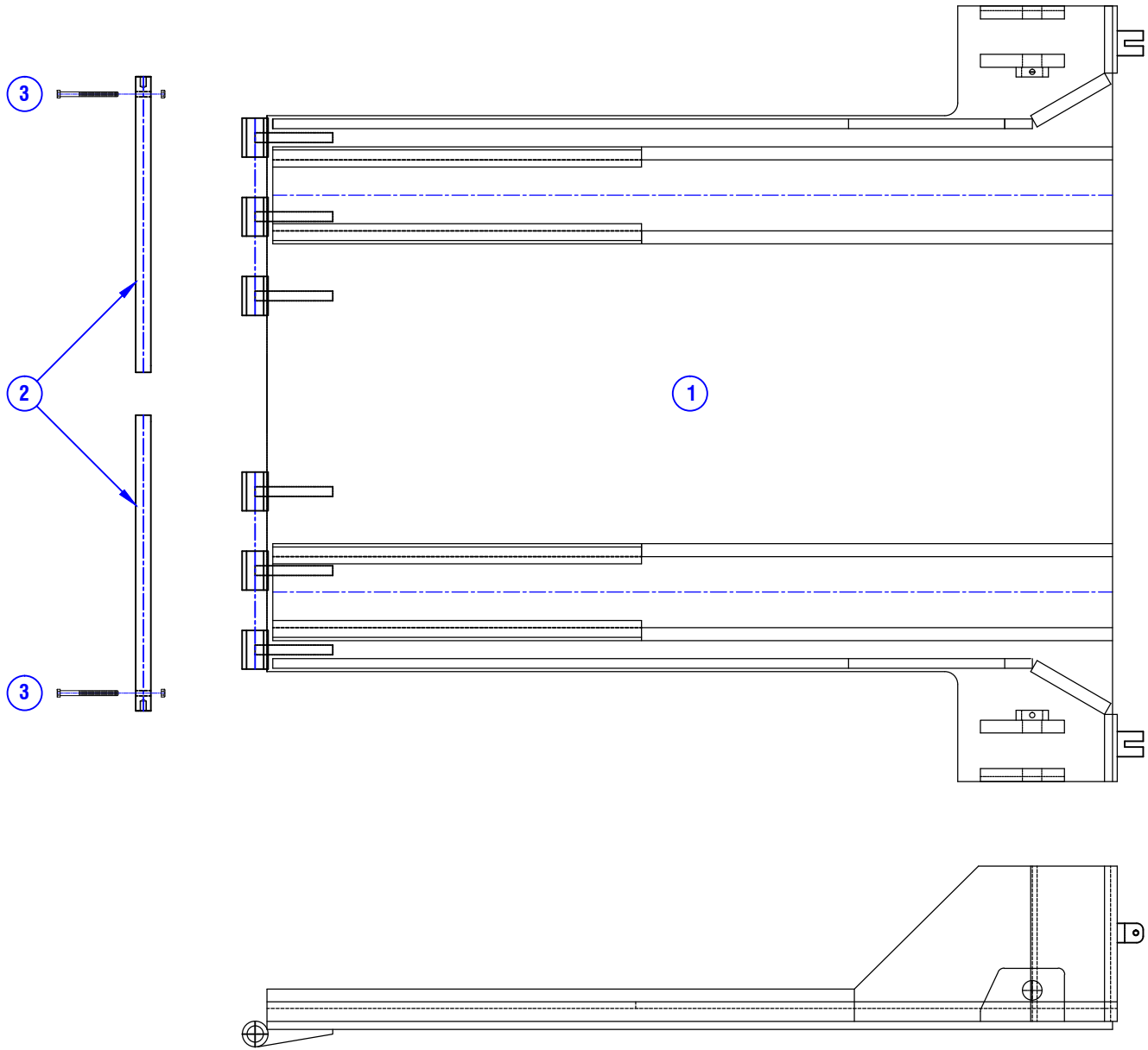


CONFIDENTIAL & PROPRIETARY

All data contained in this document is sole property of **DRY SYSTEMS TECHNOLOGIES** and is considered confidential and proprietary.

This document may not be reproduced, released to third parties, or used for purposes other than for which it was furnished, without express written consent of **DRY SYSTEMS TECHNOLOGIES**.

This document remains property of **DRY SYSTEMS TECHNOLOGIES** and must be returned upon request.



ITEM	PART NO.	QTY.	DESCRIPTION
1	M363-201-01	1	WELDMENT, SHIELD TRANSPORT TRAILER BED
2	M363-211-01	2	ROD, HINGE
3	M515-500-26	2	ROD KEEPER BOLT - 3/4-10 X 6 GR 8 HHCS
	M515-560-04	2	3/4-10 TOP LOCK NUT

TOLERANCES Linear unless noted Machined: ±0.005 Fabricated: ±0.02 Angular: ±1/2° Surface finish 125			DRY SYSTEMS TECHNOLOGIES 10420 RISING COURT WOODRIDGE, IL 60517 Phone: 630-427-2051 Fax: 630-427-1036 E-Mail: eng@drysystemstech.com	DESCRIPTION	NO RECD	
	SHIELD TRANSPORT TRAILER BED			1	SCALE	DATE
	Full	Dec 16 2015		DRAWN BY	W Fox	
	MATERIAL	APPROVED BY		DRAWING NO		
				SECTION 3-02		

