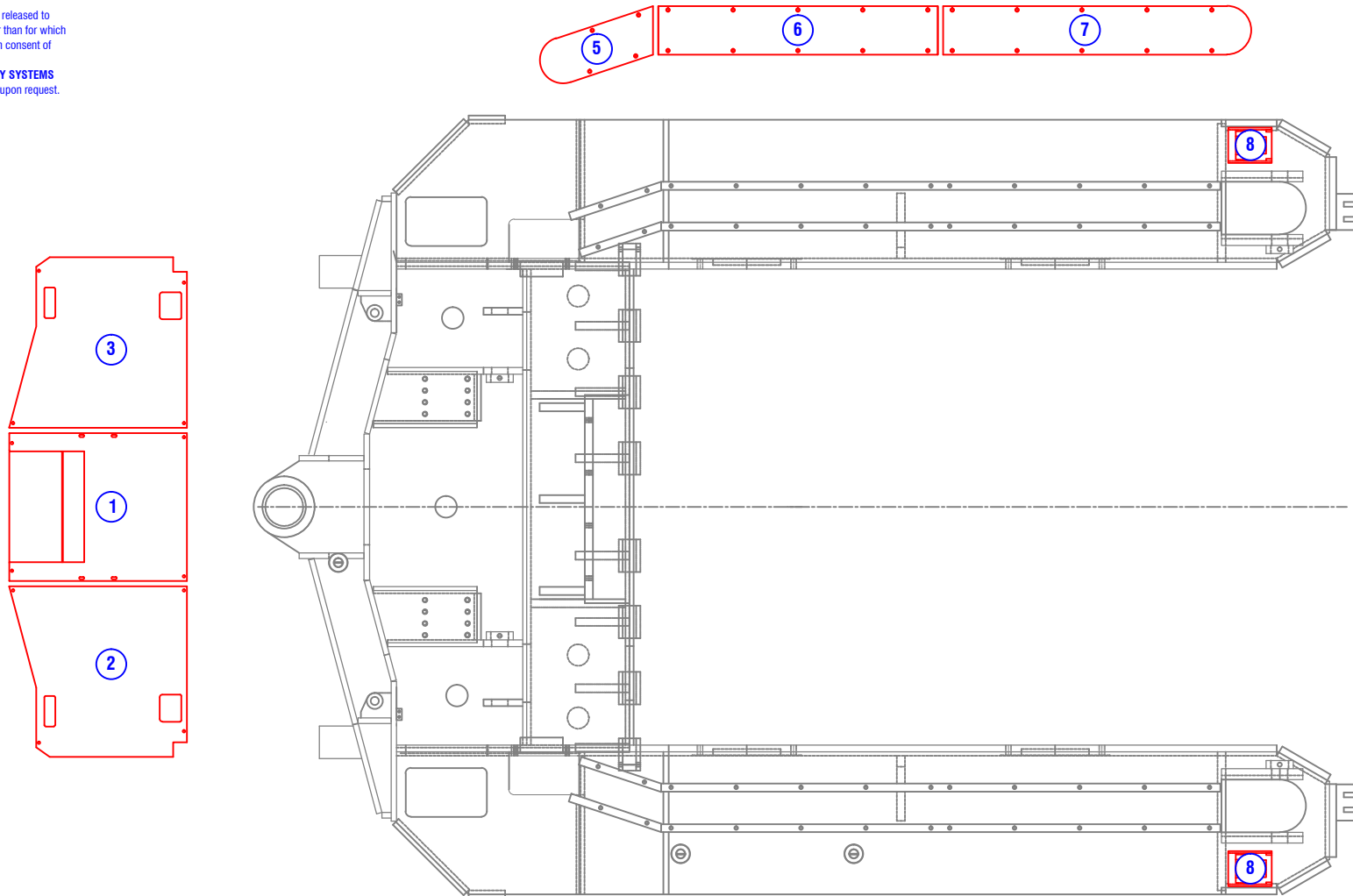


**CONFIDENTIAL & PROPRIETARY**

All data contained in this document is sole property of **DRY SYSTEMS TECHNOLOGIES** and is considered confidential and proprietary. This document may not be reproduced, released to third parties, or used for purposes other than for which it was furnished, without express written consent of **DRY SYSTEMS TECHNOLOGIES**. This document remains property of **DRY SYSTEMS TECHNOLOGIES** and must be returned upon request.



ITEM	PART NO.	QTY.	DESCRIPTION
1	M363-215-01	1	AXLE COVER, CENTER
2	M363-215-02	1	AXLE COVER , LEFT
3	M363-215-03	1	AXLE COVER, RIGHT
	M515-500-05	16	1/2-13 X 1 1/2 HEX HEAD CAP SCREWS ( AXLE COVERS)
	M600-110-01	16	1/2 LOCK WASHERS ( AXLE COVERS)
4	M363-215-04	1	CABLE & HOSE TROUGH FRONT LEFT COVER
5	M363-215-05	1	CABLE & HOSE TROUGH FRONT RIGHT COVER
6	M363-215-06	2	CABLE & HOSE TROUGH CENTER COVERS
7	M363-215-07	2	CABLE & HOSE TROUGH REAR COVERS
	M515-500-27	48	1/2-13 X 1 1/2 FLAT SOCKET CAP SCREWS ( TROUGH COVERS )
8	M363-214-01	2	LIGHT COVERS, PERMISSABLE

**TOLERANCES**

Linear unless noted  
 Machined: ±0.005  
 Fabricated: ±0.02  
 Angular: ±1/2°  
 Surface finish 125

REV	DATE	NAME	DESCRIPTION

**DRY SYSTEMS TECHNOLOGIES**

10420 RISING COURT  
 WOODRIDGE, IL 60517  
 Phone: 630-427-2051 Fax: 630-427-1036  
 E-Mail: eng@drysystemstech.com

DESCRIPTION		SHIELD TRANSPORT TRAILER COVERS		NO RECD
SCALE	DATE	DRAWN BY		APPROVED BY
Full	Dec 15 2015	W Fox		
MATERIAL		DRAWING NO		
		SECTION 3-05		

