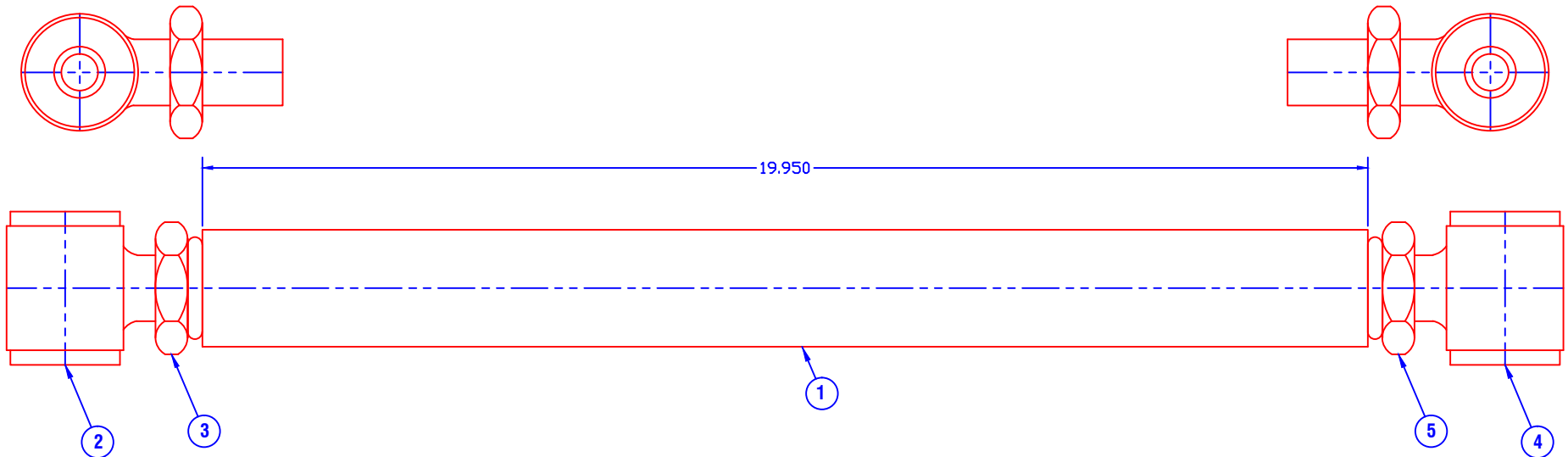


CONFIDENTIAL & PROPRIETARY

All data contained in this document is sole property of **DRY SYSTEMS TECHNOLOGIES** and is considered confidential and proprietary. This document may not be reproduced, released to third parties, or used for purposes other than for which it was furnished, without express written consent of **DRY SYSTEMS TECHNOLOGIES**. This document remains property of **DRY SYSTEMS TECHNOLOGIES** and must be returned upon request.



ITEM	PART NUMBER	QUAN.	DESCRIPTION
	M379-522-02	1	REAR PAN HARD BAR ASSEMBLY Includes 1 - 5
1	M379-522-01	1	REAR PAN HARD BAR TUBE
2	M379-540-07	1	POLY JOINT, RHT
3	M379-540-11	1	JAM NUT, RHT
4	M379-540-08	1	POLY JOINT, LHT
5	M379-540-12	1	JAM NUT, LHT

SECTION 3-07

TOLERANCES Linear unless noted Machined: ±0.005 Fabricated: ±0.02 Angular: ±1/2° Surface finish 125						DRY SYSTEMS TECHNOLOGIES 10420 RISING COURT WOODRIDGE, IL 60517 Phone: 630-427-2051 Fax: 630-427-1036 E-Mail: eng@drysystemstech.com	DESCRIPTION REAR PAN HARD BAR ASSEMBLY	NO REQS 1	
	SCALE	DATE	DRAWN BY						
	Full	Dec. 06 2017	W Fox						
	MATERIAL		APPROVED BY						
DRAWING NO		M379-522-02							