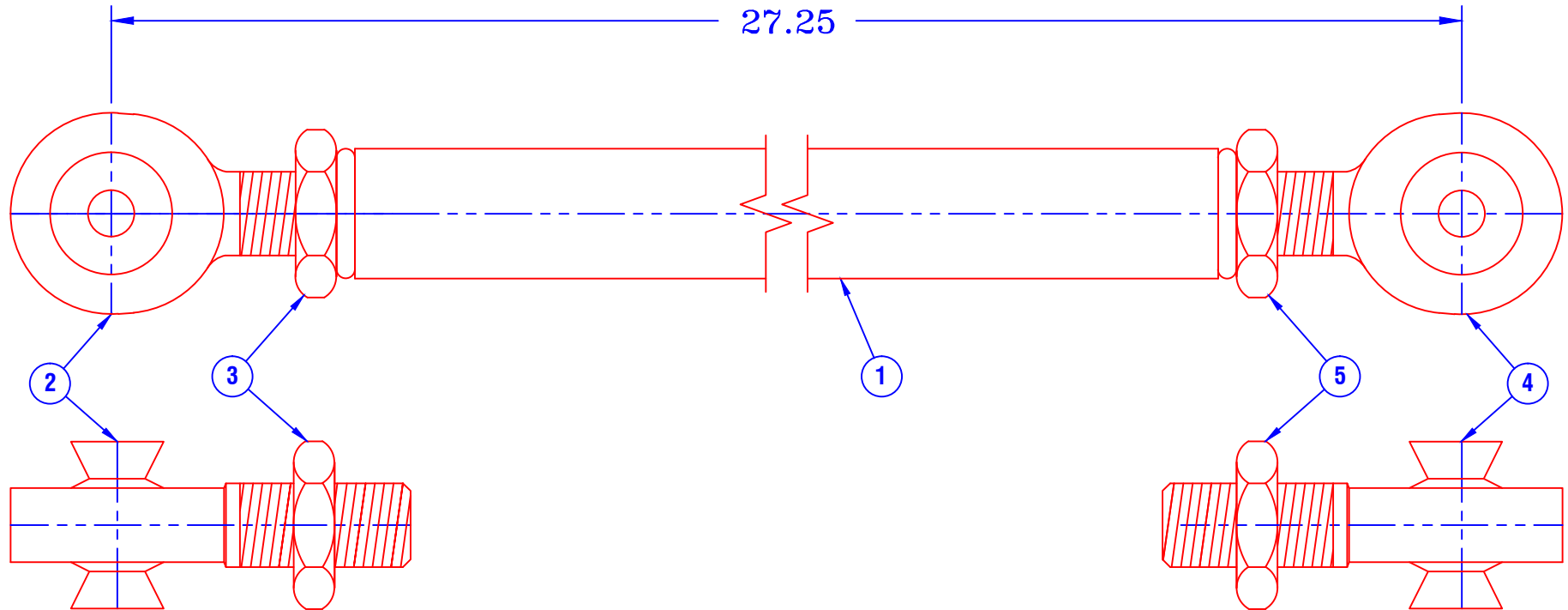


CONFIDENTIAL & PROPRIETARY

All data contained in this document is sole property of **DRY SYSTEMS TECHNOLOGIES** and is considered confidential and proprietary. This document may not be reproduced, released to third parties, or used for purposes other than for which it was furnished, without express written consent of **DRY SYSTEMS TECHNOLOGIES**. This document remains property of **DRY SYSTEMS TECHNOLOGIES** and must be returned upon request.



| ITEM | PART NUMBER | QUAN. | DESCRIPTION |
|------|-------------|-------|-------------------------------------|
| | M375-540-01 | 1 | RADIUS ARM ASSEMBLY Includes 1 - 5 |
| 1 | M375-540-02 | 1 | TUBE, RADIUS ARM, UPPER |
| 2 | M375-510-01 | 1 | ENDURO JOINT, LH |
| 3 | M379-540-12 | 1 | JAM NUT, LH |
| 4 | M375-511-01 | 1 | ENDURO JOINT, RH |
| 5 | M379-540-11 | 1 | JAM NUT, RH |
| | M515-500-60 | 2 | HHCS 5/8 -11 X 4 1/2 GR 8 Not Shown |
| | M515-530-03 | 2 | LOCK WASHER, 5/8 |
| | M515-560-60 | 2 | NUT, 5/8 |

SECTION 3-08

| TOLERANCES | |
|---------------------|--|
| Linear unless noted | |
| Machined: ±0.005 | |
| Fabricated: ±0.02 | |
| Angular: ±1/2° | |
| Surface finish 125 | |

DRY SYSTEMS TECHNOLOGIES
 10420 RISING COURT
 WOODRIDGE, IL 60517
 Phone: 630-427-2051 Fax: 630-427-1036
 E-Mail: eng@dryssystemstech.com

| DESCRIPTION | | NO RECD | |
|----------------------------|--------------|-------------|--|
| RADIUS ARM ASSEMBLY, UPPER | | 1 | |
| SCALE | DATE | DRAWN BY | |
| Full | Dec. 06 2017 | W Fox | |
| MATERIAL | | APPROVED BY | |
| DRAWING NO | | M375-540-01 | |

