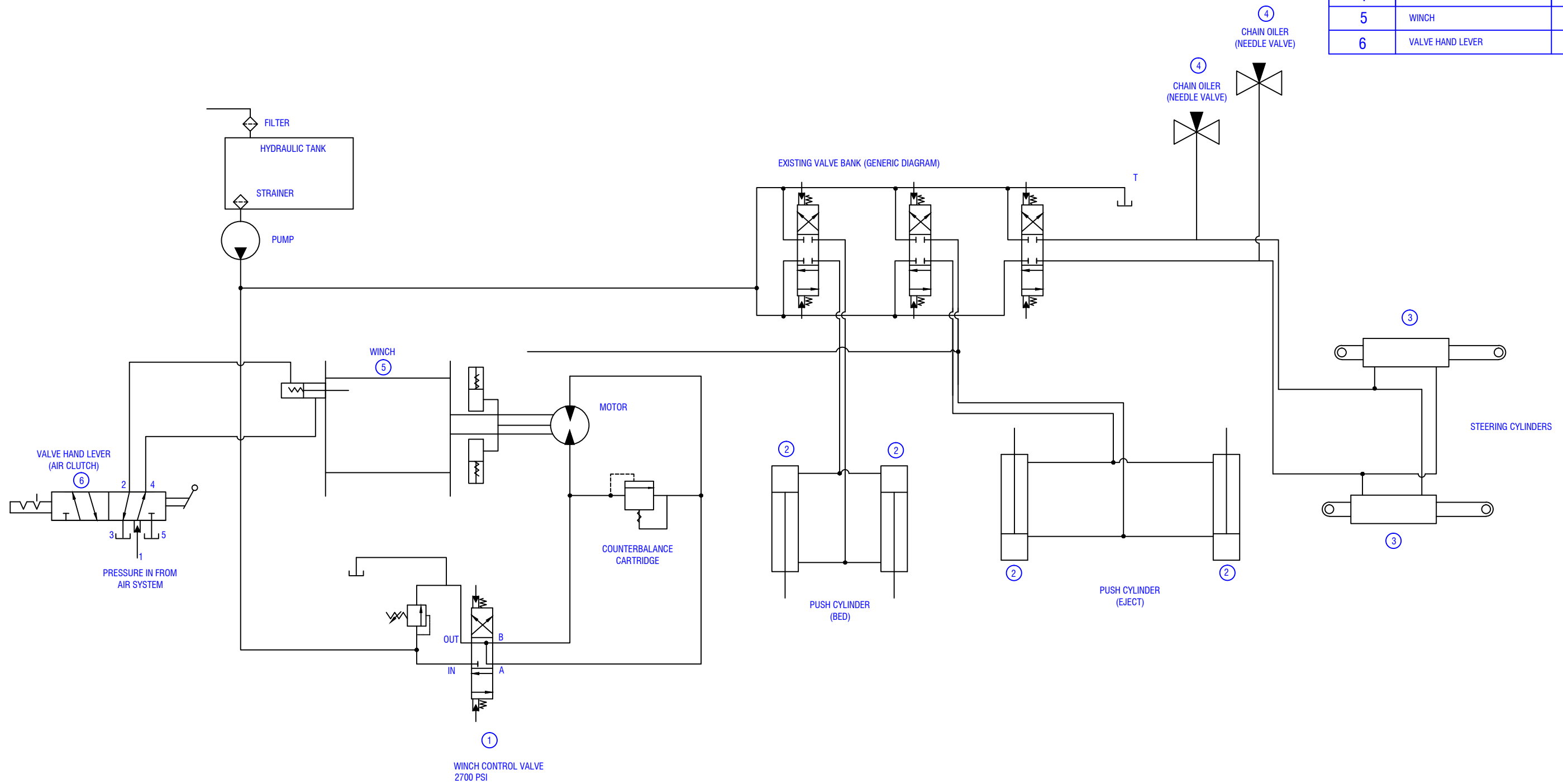


CONFIDENTIAL & PROPRIETARY

All data contained in this document is sole property of DRY SYSTEMS TECHNOLOGIES and is considered confidential and proprietary. This document may not be reproduced, released to third parties, or used for purposes other than for which it was furnished, without express written consent of DRY SYSTEMS TECHNOLOGIES. This document remains property of DRY SYSTEMS TECHNOLOGIES and must be returned upon request.

BILL OF MATERIAL

ITEM #	DESCRIPTION	PART NUMBER
1	WINCH CONTROL VALVE	M363-508-01
2	PUSH CYLINDER	M363-503-10
3	4114 HAULER STEER CYLINDERS	
4	CHAIN OILER	M507-625-01
5	WINCH	M363-505-01
6	VALVE HAND LEVER	M30-615-01



TOLERANCES Linear unless noted Machined: ±0.005 Fabricated: ±0.02 Angular: ±1/2° Surface finish 125	SCALE: NONE DATE: July 2015 MATERIAL: See BOM	DRAWN BY: J. Fietsam APPROVED BY:	DRY SYSTEMS TECHNOLOGIES 10420 RISING COURT WOODRIDGE, IL 60517 Phone: 630-427-2051 Fax: 630-427-1036 E-Mail: ena@drysystemstech.com	DESCRIPTION: Hydraulic Diagram NO. REV: 01 DRAWING NO: M363-001-01
	DRAWING NO: M363-001-01			
	APPROVED BY:			
	DATE:			