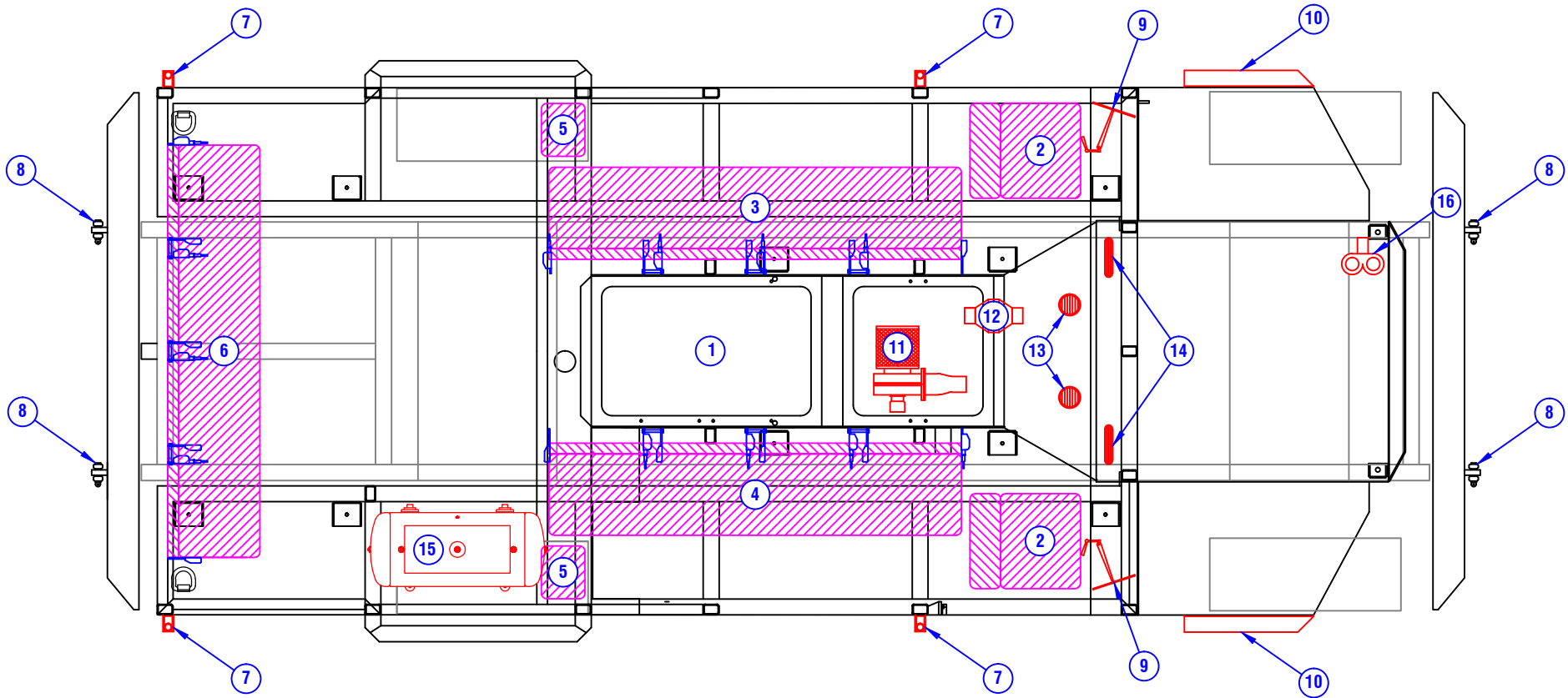


**CONFIDENTIAL & PROPRIETARY**

All data contained in this document is sole property of **DRY SYSTEMS TECHNOLOGIES** and is considered confidential and proprietary.

This document may not be reproduced, released to third parties, or used for purposes other than for which it was furnished, without express written consent of **DRY SYSTEMS TECHNOLOGIES**.

This document remains property of **DRY SYSTEMS TECHNOLOGIES** and must be returned upon request.



**SECTION 4-02**

TOLERANCES	
Linear unless noted	
Machined: $\pm 0.005$	
Fabricated: $\pm 0.02$	
Angular: $\pm 1/2^\circ$	
Surface finish 125	

**DRY SYSTEMS TECHNOLOGIES**  
 10420 RISING COURT  
 WOODRIDGE, IL 60517  
 Phone: 630-427-2051 Fax: 630-427-1036  
 E-Mail: [eng@drysystemstech.com](mailto:eng@drysystemstech.com)

DESCRIPTION BODY LAYOUT - 1		NO RECD 1
SCALE Full	DATE May 09, 2018	DRAWN BY W Fox
MATERIAL		APPROVED BY
DRAWING NO <b>BODY LAYOUT</b>		

