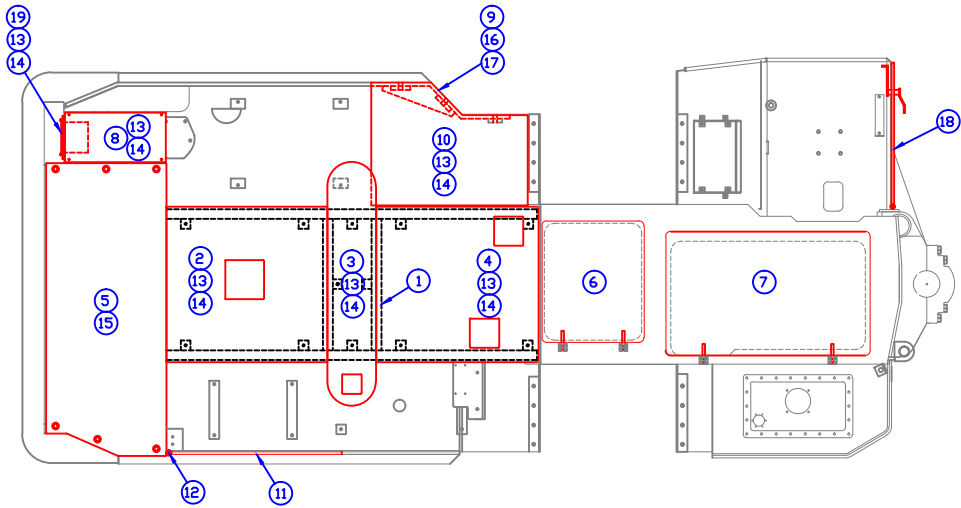


CONFIDENTIAL & PROPRIETARY

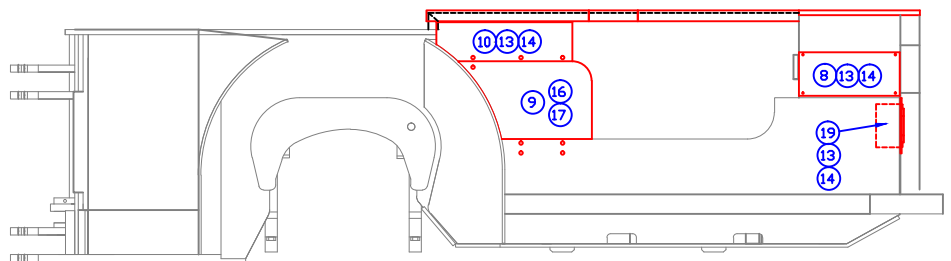
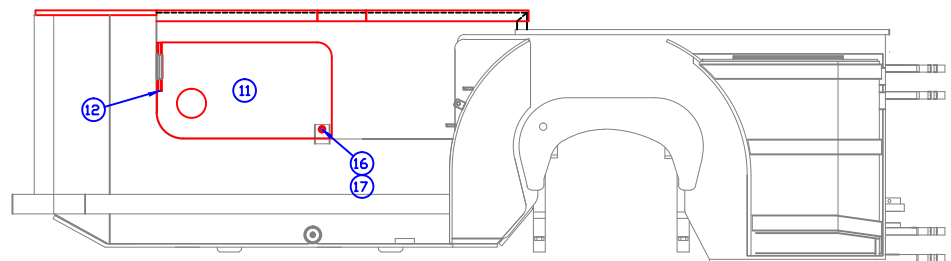
All data contained in this document is sole property of **DRY SYSTEMS TECHNOLOGIES** and is considered confidential and proprietary.

This document may not be reproduced, released to third parties, or used for purposes other than for which it was furnished, without express written consent of **DRY SYSTEMS TECHNOLOGIES**.

This document remains property of **DRY SYSTEMS TECHNOLOGIES** and must be returned upon request.



ITEM	PART NUMBER	QUAN.	DESCRIPTION
1	M350-297-02	1	ENGINE COVER SUPPORT
2	M350-297-03	1	COVER, ENGINE, REAR SN M600000 to M600029
3	M350-297-04	1	COVER, ENGINE, CENTER SN M600000 to M600029
4	M350-297-05	1	COVER, ENGINE, FRONT SN M600000 to M600029
5	M350-257-00	1	RADIATOR TOP PLATE
6	M350-280-00	1	COVER, REAR AXLE SN M600000 to M600029
7	M350-281-00	1	COVER, TRANSMISSION SN M600000 to M600029
8	M350-297-06	1	COVER, FIRE SUPPRESSION
9	M350-254-00	1	GUARD, LEFT SIDE
10	M350-297-07	1	COVER, LEFT SIDE GUARD
11	M350-256-01	1	DOOR, AC
12	M350-256-04	1	HINGE PIN, AC DOOR
13	M509-528-01	24	CAPSCREW, HEX HEAD 1/2-13 X 1 GR8
14	M600-110-01	24	LOCKWASHER, 1/2
15	M515-500-19	6	FLAT HEAD SOCKET CAPSCREW 3/4-10 X 2 1/2 GR8
16	M515-500-15	6	CAPSCREW, HEX HEAD 3/4-10 X 1 1/2 GR8
17	M515-530-04	6	LOCKWASHER, 3/4
18	M350-253-00	1	DOOR, OPERATORS CAB
19	M350-296-01	1	PTO HOUSING, REAR



SECTION 4-04 1 of 2

TOLERANCES

Linear unless noted
 Machined: ±0.005
 Fabricated: ±0.02
 Angular: ±1/2°
 Surface finish 125

REV	DATE	NAME	DESCRIPTION

DRY SYSTEMS TECHNOLOGIES

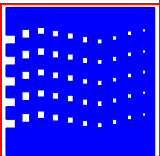
10420 RISING COURT
 WOODRIDGE, IL 60517
 Phone: 630-427-2051 Fax: 630-427-1036
 E-Mail: and@drysystemstech.com

DESCRIPTION: DOOR & COVER INSTALLATION NO RECD: 1

SCALE: Full DATE: July 27 2015 DRAWN BY: W Fox

MATERIAL: APPROVED BY:

DRAWING NO: **M350-297-01**

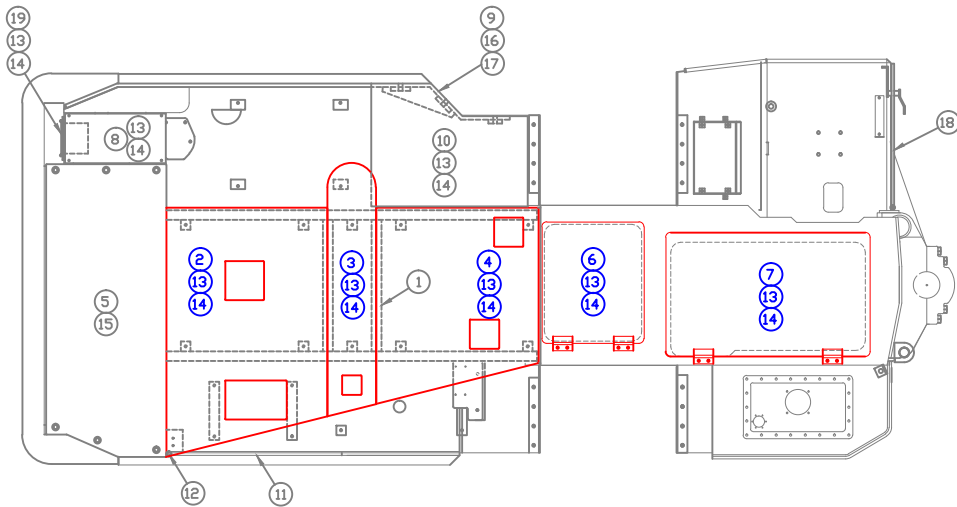


CONFIDENTIAL & PROPRIETARY

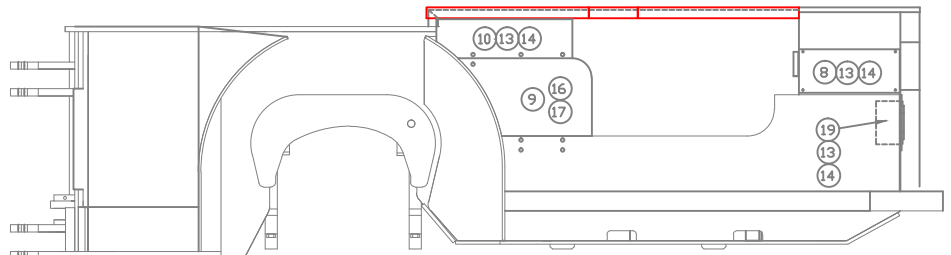
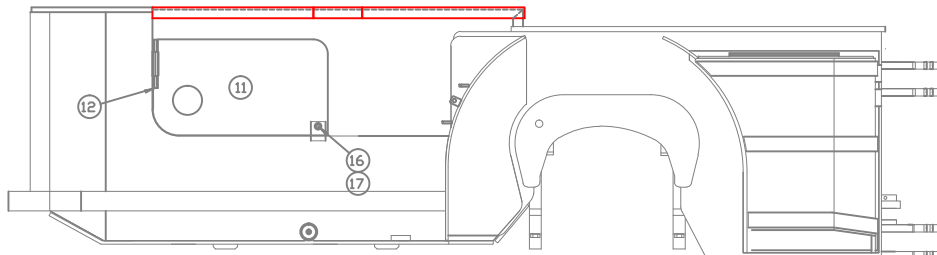
All data contained in this document is sole property of **DRY SYSTEMS TECHNOLOGIES** and is considered confidential and proprietary.

This document may not be reproduced, released to third parties, or used for purposes other than for which it was furnished, without express written consent of **DRY SYSTEMS TECHNOLOGIES**.

This document remains property of **DRY SYSTEMS TECHNOLOGIES** and must be returned upon request.



ITEM	PART NUMBER	QUAN.	DESCRIPTION
1	M350-297-02	1	ENGINE COVER SUPPORT
2	M350-297-03A	1	COVER, ENGINE, REAR SN M600030 and UP
3	M350-297-04A	1	COVER, ENGINE, CENTER SN M600030 and UP
4	M350-297-05A	1	COVER, ENGINE, FRONT SN M600030 and UP
5	M350-257-00	1	RADIATOR TOP PLATE
6	M350-280-00A	1	COVER, REAR AXLE SN M600030 and UP
7	M350-281-00A	1	COVER, TRANSMISSION SN M600030 and UP
8	M350-297-06	1	COVER, FIRE SUPPRESSION
9	M350-254-00	1	GUARD, LEFT SIDE
10	M350-297-07	1	COVER, LEFT SIDE GUARD
11	M350-256-01	1	DOOR, AC
12	M350-256-04	1	HINGE PIN, AC DOOR
13	M509-528-01	37	CAPSCREW, HEX HEAD 1/2-13 X 1 GR8
14	M600-110-01	37	LOCKWASHER, 1/2
15	M515-500-19	6	FLAT HEAD SOCKET CAPSCREW 3/4-10 X 2 1/2 GR8
16	M515-500-15	6	CAPSCREW, HEX HEAD 3/4-10 X 1 1/2 GR8
17	M515-530-04	6	LOCKWASHER, 3/4
18	M350-253-00	1	DOOR, OPERATORS CAB
19	M350-296-01	1	PTO HOUSING, REAR



SECTION 4-04 2 of 2

TOLERANCES	
Linear unless noted	
Machined: ±0.005	
Fabricated: ±0.02	
Angular: ±1/2°	
Surface finish 125	
REV	DATE
NAME	DESCRIPTION

DRY SYSTEMS TECHNOLOGIES
 10420 RISING COURT
 WOODRIDGE, IL 60517
 Phone: 630-427-2051 Fax: 630-427-1036
 E-Mail: and@drysystemstech.com

DESCRIPTION		NO RECD
NEW STYLE COVERS		1
SCALE	DATE	DRAWN BY
Full	Sept 14 2016	W Fox
MATERIAL	APPROVED BY	
DRAWING NO	M350-297-01	

