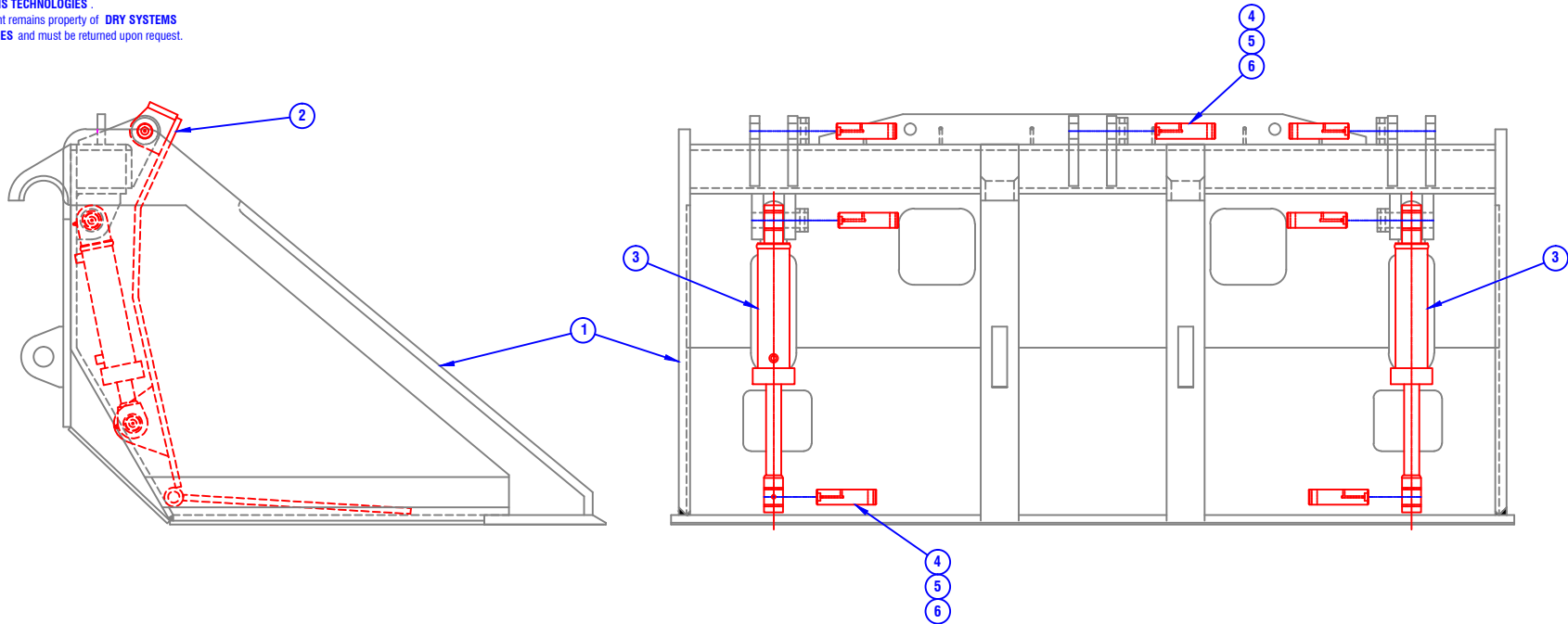


CONFIDENTIAL & PROPRIETARY

All data contained in this document is sole property of **DRY SYSTEMS TECHNOLOGIES** and is considered confidential and proprietary.

This document may not be reproduced, released to third parties, or used for purposes other than for which it was furnished, without express written consent of **DRY SYSTEMS TECHNOLOGIES**.

This document remains property of **DRY SYSTEMS TECHNOLOGIES** and must be returned upon request.



ITEM	PART NUMBER	QUAN.	DESCRIPTION
	M350-202-18	1	BUCKET ASSEMBLY 3.5 YD, QUICK ATTACH INCLUDES 1-6
1	M350-202-18W	1	BUCKET WELDMENT
2	M350-202-24	1	EJECTOR BLADE ASSEMBLY REF SHEET #2
3	M350-522-10	2	CYLINDER, EOD, BUCKET REF SECTION 5-39
4	M350-216-01	7	PIN, EOD BUCKET
5	M503-558-01	7	HEX HEAD CAPSCREW, 1/2 - 13 X 4 1/2 GR8 Not Shown
6	M515-560-07	7	NUT, TOPLOCK, 1/2" Not Shown

TOLERANCES	REV	DATE	NAME	DESCRIPTION
Linear unless noted				
Machined: ±0.005				
Fabricated: ±0.02				
Angular: ±1/2°				
Surface finish 125				

DRY SYSTEMS TECHNOLOGIES
 10420 RISING COURT
 WOODRIDGE, IL 60517
 Phone: 630-427-2051 Fax: 630-427-1036
 E-Mail: eng@drysystemstech.com

DESCRIPTION	BUCKET ASSEMBLY, QUICK ATTACH		NO RECD
			1
SCALE	DATE	DRAWN BY	
Full	April 21 2015	W Fox	
MATERIAL	APPROVED BY		
0.125 A36 Steel			
DRAWING NO	M350-202-18		

