

CONFIDENTIAL & PROPRIETARY

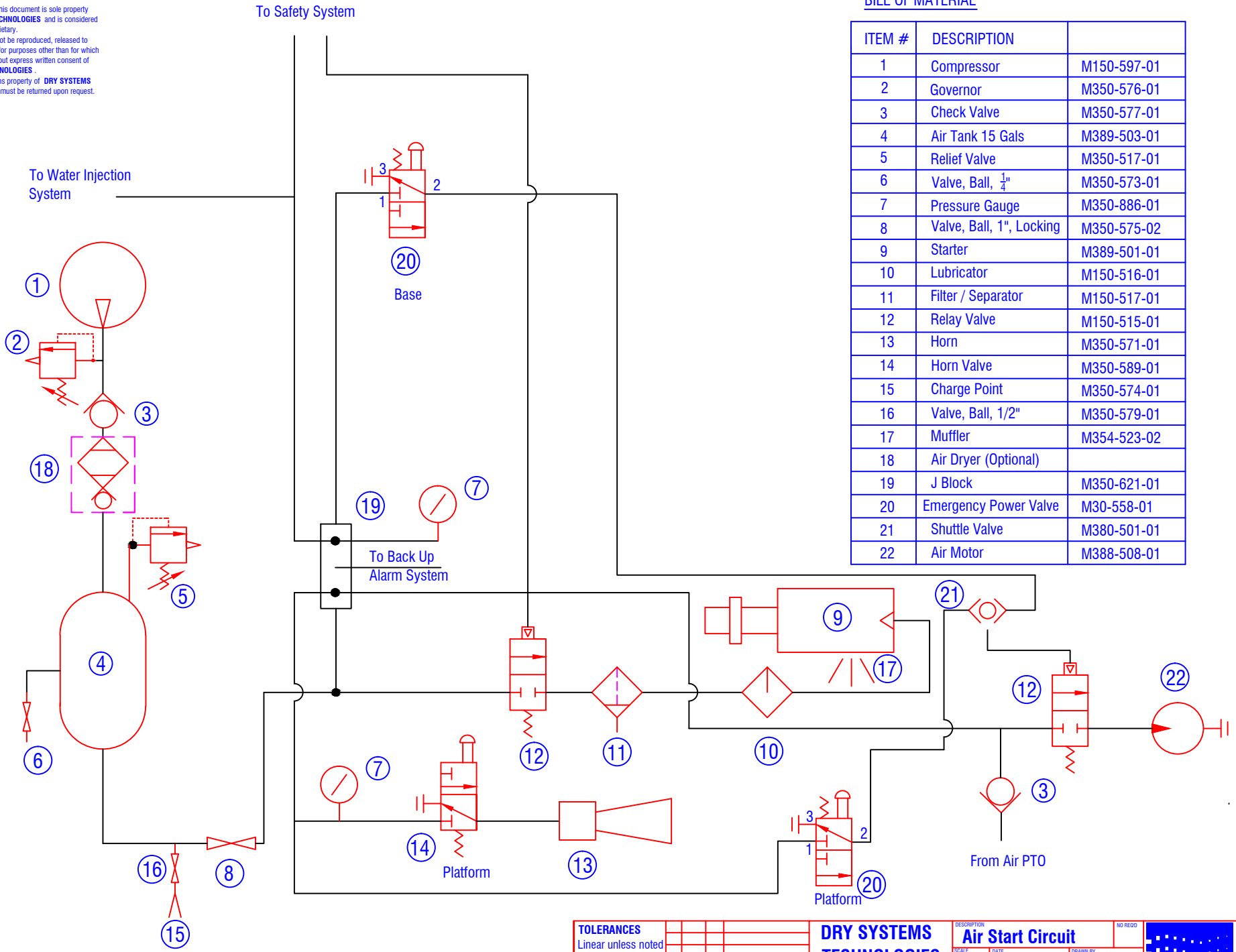
All data contained in this document is sole property of **DRY SYSTEMS TECHNOLOGIES** and is considered confidential and proprietary.

This document may not be reproduced, released to third parties, or used for purposes other than for which it was furnished, without express written consent of **DRY SYSTEMS TECHNOLOGIES**.

This document remains property of **DRY SYSTEMS TECHNOLOGIES** and must be returned upon request.

BILL OF MATERIAL

ITEM #	DESCRIPTION	
1	Compressor	M150-597-01
2	Governor	M350-576-01
3	Check Valve	M350-577-01
4	Air Tank 15 Gals	M389-503-01
5	Relief Valve	M350-517-01
6	Valve, Ball, 1/4"	M350-573-01
7	Pressure Gauge	M350-886-01
8	Valve, Ball, 1", Locking	M350-575-02
9	Starter	M389-501-01
10	Lubricator	M150-516-01
11	Filter / Separator	M150-517-01
12	Relay Valve	M150-515-01
13	Horn	M350-571-01
14	Horn Valve	M350-589-01
15	Charge Point	M350-574-01
16	Valve, Ball, 1/2"	M350-579-01
17	Muffler	M354-523-02
18	Air Dryer (Optional)	
19	J Block	M350-621-01
20	Emergency Power Valve	M30-558-01
21	Shuttle Valve	M380-501-01
22	Air Motor	M388-508-01



SECTION 5-01

TOLERANCES

Linear unless noted	
Machined: ±0.005	
Fabricated: ±0.02	
Angular: ±1/2°	
Surface finish 125	

REV	DATE	NAME	DESCRIPTION

DRY SYSTEMS TECHNOLOGIES
 10420 RISING COURT
 WOODRIDGE, IL 60517
 Phone: 630-427-2051 Fax: 630-427-1036
 E-Mail: eng@drysystemstech.com

DESCRIPTION Air Start Circuit		NO RECD
SCALE: NONE	DATE: Dec 4, 2018	DRAWN BY: R Gibbs
MATERIAL:	APPROVED BY:	
DRAWING NO: M388-001-02		

