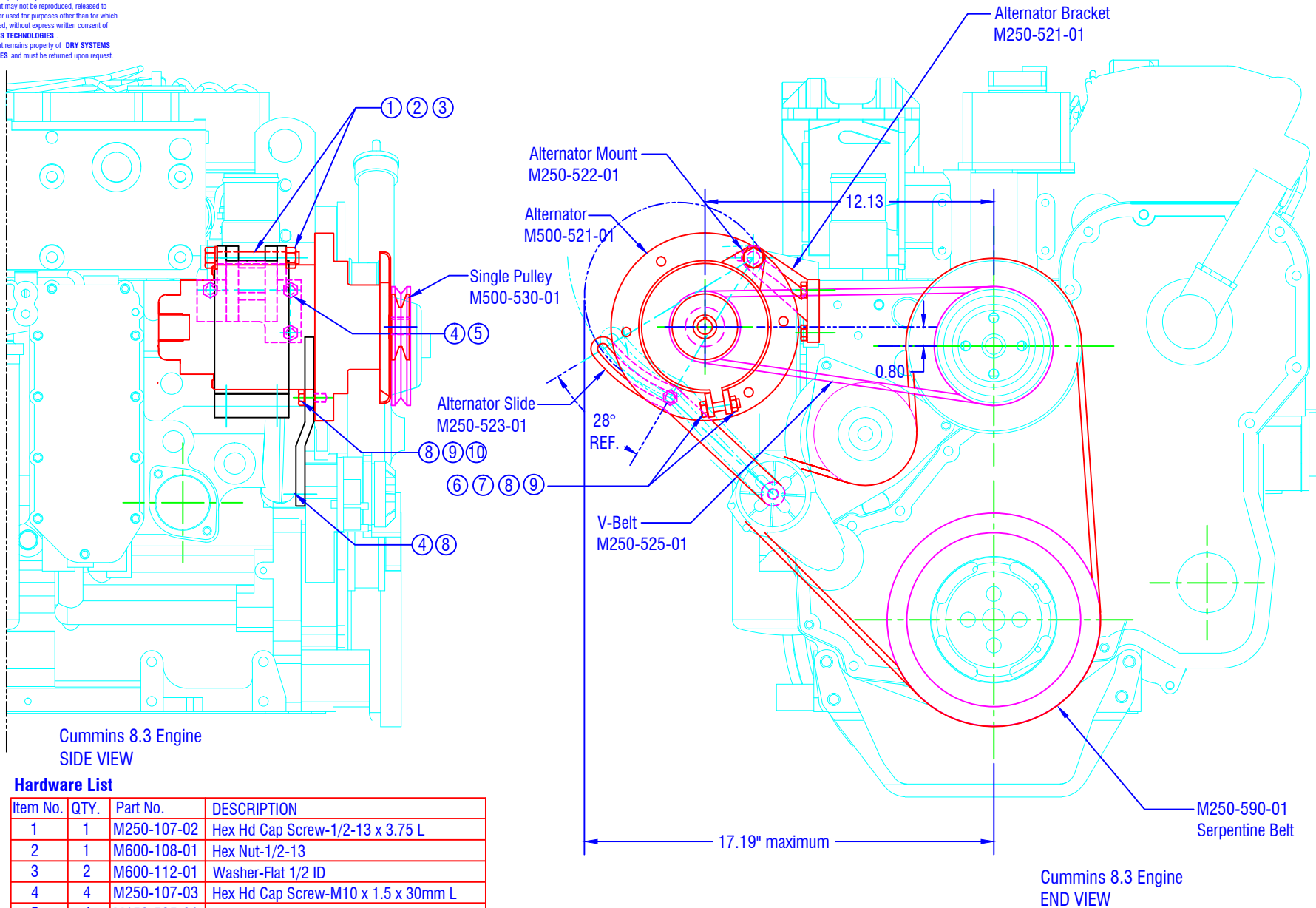


**CONFIDENTIAL & PROPRIETARY**

All data contained in this document is sole property of DRY SYSTEMS TECHNOLOGIES and is considered confidential and proprietary. This document may not be reproduced, released to third parties, or used for purposes other than for which it was furnished, without express written consent of DRY SYSTEMS TECHNOLOGIES. This document remains property of DRY SYSTEMS TECHNOLOGIES and must be returned upon request.



Cummins 8.3 Engine  
SIDE VIEW

**Hardware List**

Item No.	QTY.	Part No.	DESCRIPTION
1	1	M250-107-02	Hex Hd Cap Screw-1/2-13 x 3.75 L
2	1	M600-108-01	Hex Nut-1/2-13
3	2	M600-112-01	Washer-Flat 1/2 ID
4	4	M250-107-03	Hex Hd Cap Screw-M10 x 1.5 x 30mm L
5	4	M150-535-01	Lock Washer-M10
6	2	M250-107-04	Hex Hd Cap Screw-3/8-16 x 1.50 L
7	2	M600-109-01	Hex Nut-3/8-16
8	3	M250-107-05	Washer-Flat 3/8 ID
9	3	M600-123-01	Lock Washer- 3/8 ID
10	1	M600-124-01	Hex Hd Cap Screw-3/8-16 x 1.25 L

Cummins 8.3 Engine  
END VIEW

**SECTION 5-04**

**TOLERANCES**

Linear unless noted  
 Machined: ±0.005  
 Fabricated: ±0.02  
 Angular: ±1/2°  
 Surface finish 125

REV	DATE	BY	DESCRIPTION
A	Aug 08	NI	Redrawn

**DRY SYSTEMS TECHNOLOGIES**  
 8102 LEMONT ROAD, SUITE 700  
 WOODRIDGE, IL 60517  
 Phone: 630-427-2051 Fax: 630-427-1036  
 E-Mail: eng@drysystemstech.com

DESCRIPTION		NO RECD	
Alternator Installation			
SCALE	DATE	DRAWN BY	
FULL	22 July 2005	Roger Gibbs	
MATERIAL		APPROVED BY	
See Detail Drawings			
DRAWING NO			
<b>M250-107-01</b>			

