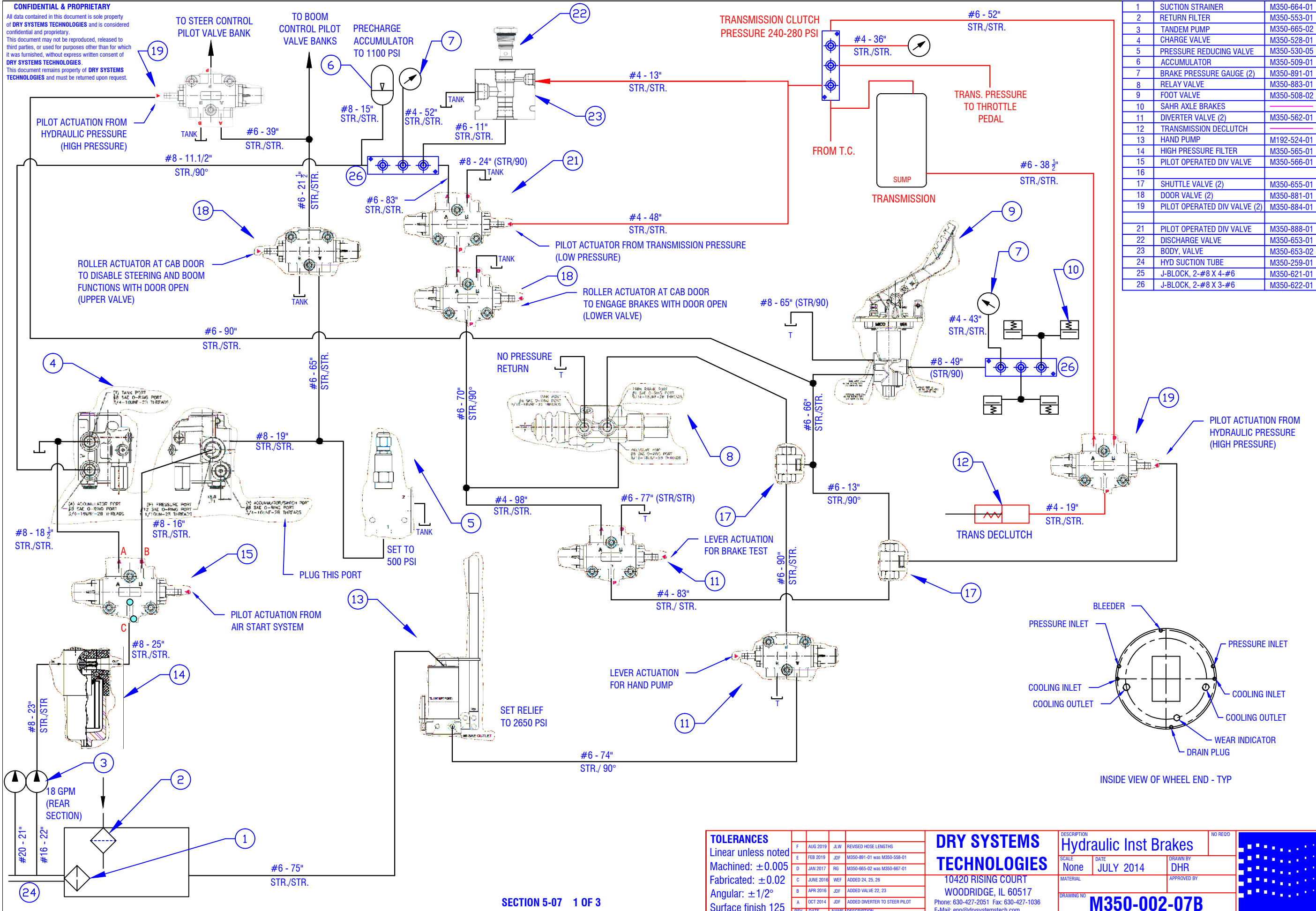
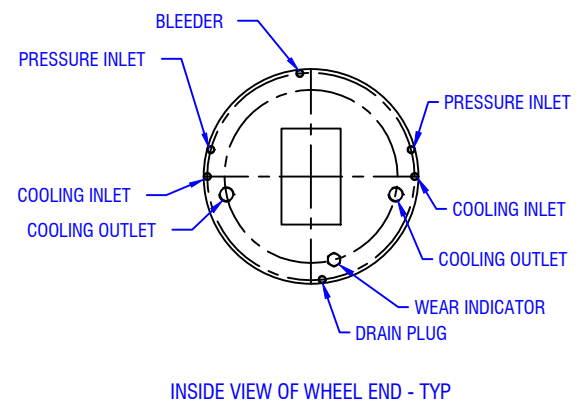


CONFIDENTIAL & PROPRIETARY

All data contained in this document is sole property of DRY SYSTEMS TECHNOLOGIES and is considered confidential and proprietary. This document may not be reproduced, released to third parties, or used for purposes other than for which it was furnished, without express written consent of DRY SYSTEMS TECHNOLOGIES. This document remains property of DRY SYSTEMS TECHNOLOGIES and must be returned upon request.



1	SUCTION STRAINER	M350-664-01
2	RETURN FILTER	M350-553-01
3	TANDEM PUMP	M350-665-02
4	CHARGE VALVE	M350-528-01
5	PRESSURE REDUCING VALVE	M350-530-05
6	ACCUMULATOR	M350-509-01
7	BRAKE PRESSURE GAUGE (2)	M350-891-01
8	RELAY VALVE	M350-883-01
9	FOOT VALVE	M350-508-02
10	SAHR AXLE BRAKES	
11	DIVERTER VALVE (2)	M350-562-01
12	TRANSMISSION DECLUTCH	
13	HAND PUMP	M192-524-01
14	HIGH PRESSURE FILTER	M350-565-01
15	PILOT OPERATED DIV VALVE	M350-566-01
16		
17	SHUTTLE VALVE (2)	M350-655-01
18	DOOR VALVE (2)	M350-881-01
19	PILOT OPERATED DIV VALVE (2)	M350-884-01
20		
21	PILOT OPERATED DIV VALVE	M350-888-01
22	DISCHARGE VALVE	M350-653-01
23	BODY VALVE	M350-653-02
24	HYD SUCTION TUBE	M350-259-01
25	J-BLOCK, 2-#8 X 4-#6	M350-621-01
26	J-BLOCK, 2-#8 X 3-#6	M350-622-01



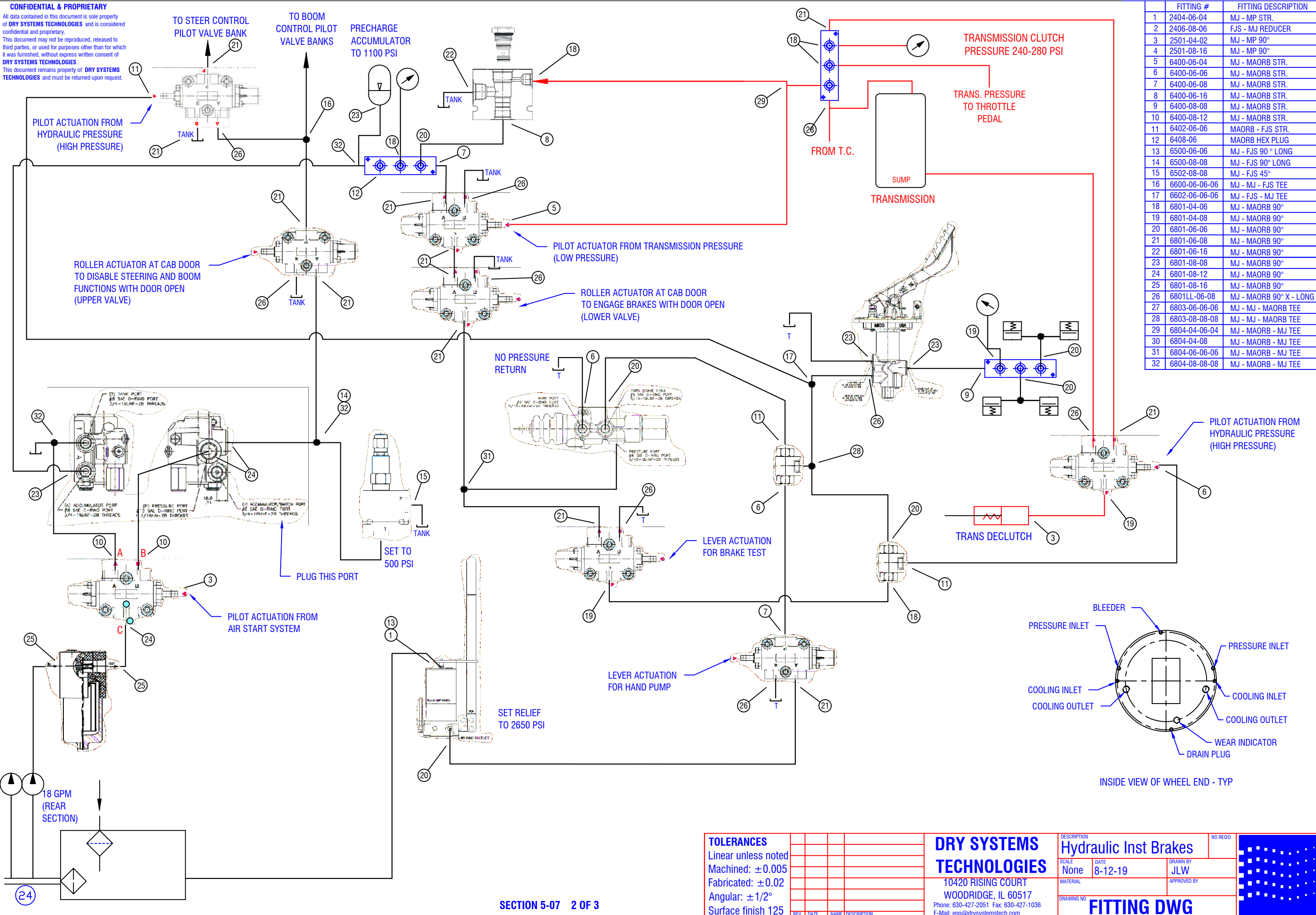
TOLERANCES
 Linear unless noted
 Machined: ±0.005
 Fabricated: ±0.02
 Angular: ±1/2°
 Surface finish 125

REV	DATE	NAME	DESCRIPTION
F	AUG 2019	JLW	REVISED HOSE LENGTHS
E	FEB 2019	JDF	M350-891-01 was M350-559-01
D	JAN 2017	RG	M350-665-02 was M350-667-01
C	JUNE 2016	WEF	ADDED 24, 25, 26
B	APR 2016	JDF	ADDED VALVE 22, 23
A	OCT 2014	JDF	ADDED DIVERTER TO STEER PILOT

DRY SYSTEMS TECHNOLOGIES
 10420 RISING COURT
 WOODRIDGE, IL 60517
 Phone: 630-427-2051 Fax: 630-427-1036
 E-Mail: eng@drysystemstech.com

DESCRIPTION	Hydraulic Inst Brakes		NO RECD
SCALE	None	DATE	JULY 2014
DRAWN BY	DHR		APPROVED BY
DRAWING NO	M350-002-07B		

CONFIDENTIAL & PROPRIETARY
 All data contained in this document is sole property of DRY SYSTEMS TECHNOLOGIES and is considered confidential and proprietary.
 This document may not be reproduced, released to third parties, or used for purposes other than for which it was furnished, without express written consent of DRY SYSTEMS TECHNOLOGIES.
 This document remains property of DRY SYSTEMS TECHNOLOGIES and must be returned upon request.

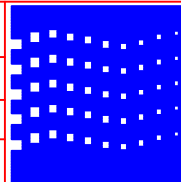


FITTING #	FITTING DESCRIPTION
1	2404-06-04 MJ - MP STR.
2	2406-08-06 FJS - MJ REDUCER
3	2501-04-02 MJ - MP 90°
4	2501-08-16 MJ - MP 90°
5	6400-06-04 MJ - MAORB STR.
6	6400-06-06 MJ - MAORB STR.
7	6400-06-08 MJ - MAORB STR.
8	6400-06-16 MJ - MAORB STR.
9	6400-08-08 MJ - MAORB STR.
10	6400-08-12 MJ - MAORB STR.
11	6402-06-06 MAORB - FJS STR.
12	6408-06 MAORB HEX PLUG
13	6500-06-06 MJ - FJS 90° LONG
14	6500-08-08 MJ - FJS 90° LONG
15	6502-08-08 MJ - FJS 45°
16	6600-06-06-06 MJ - MJ - FJS TEE
17	6602-06-06-06 MJ - FJS - MJ TEE
18	6801-04-06 MJ - MAORB 90°
19	6801-04-08 MJ - MAORB 90°
20	6801-06-06 MJ - MAORB 90°
21	6801-06-08 MJ - MAORB 90°
22	6801-06-16 MJ - MAORB 90°
23	6801-08-08 MJ - MAORB 90°
24	6801-08-12 MJ - MAORB 90°
25	6801-08-16 MJ - MAORB 90°
26	6801LL-06-08 MJ - MAORB 90° X - LONG
27	6803-06-06-06 MJ - MJ - MAORB TEE
28	6803-08-08-08 MJ - MJ - MAORB TEE
29	6804-04-06-04 MJ - MAORB - MJ TEE
30	6804-04-08 MJ - MAORB - MJ TEE
31	6804-06-06-06 MJ - MAORB - MJ TEE
32	6804-08-08-08 MJ - MAORB - MJ TEE

TOLERANCES	
Linear unless noted	
Machined: ±0.005	
Fabricated: ±0.02	
Angular: ±1/2°	
Surface finish 125	

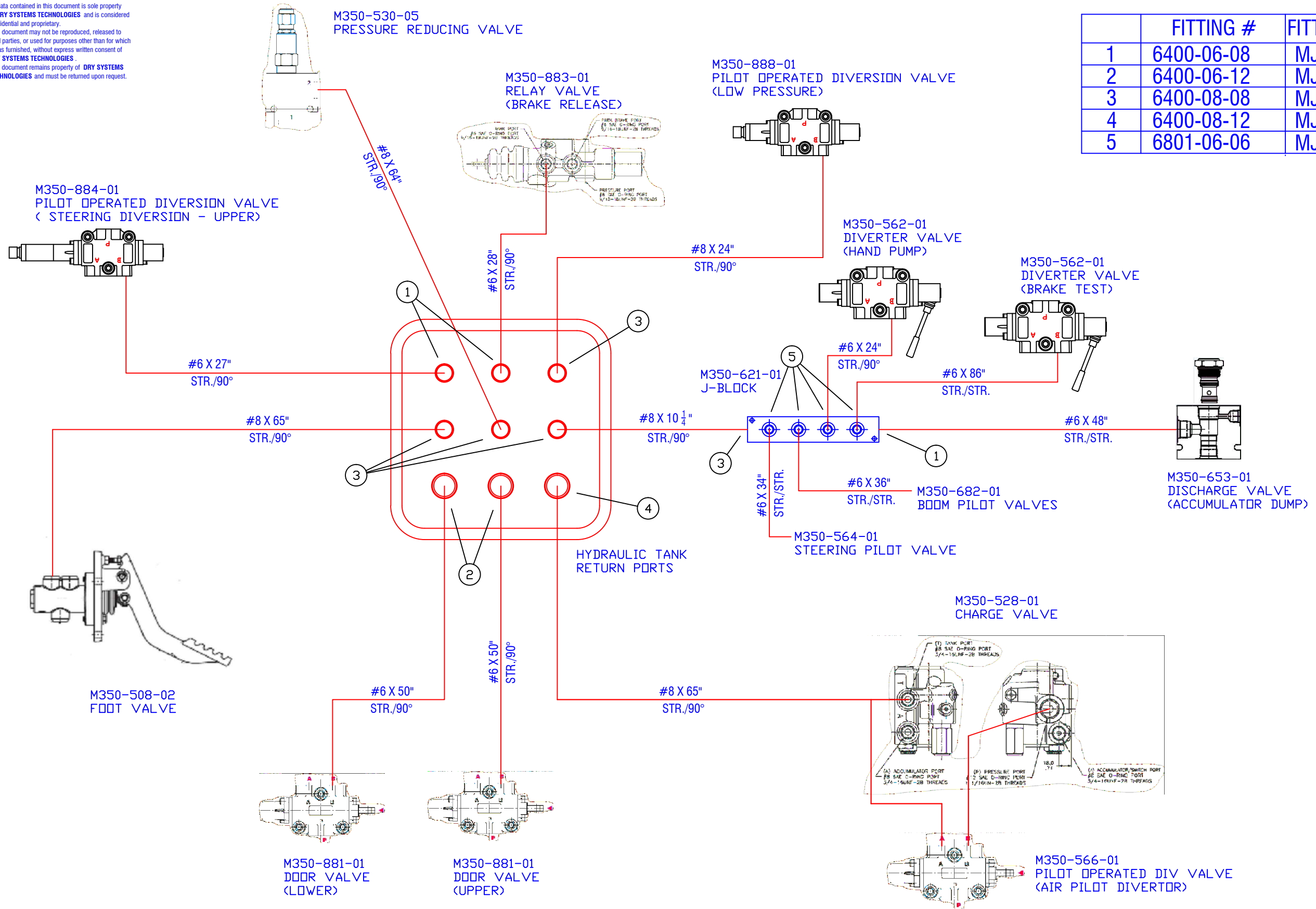
DRY SYSTEMS TECHNOLOGIES
 10420 RISING COURT
 WOODRIDGE, IL 60517
 Phone: 630-427-2051 Fax: 630-427-1036
 E-Mail: eng@drysystemstech.com

DESCRIPTION	Hydraulic Inst Brakes	NO RECD
SCALE	None	DATE
		8-12-19
MATERIAL		DRAWN BY
		JLW
		APPROVED BY
DRAWING NO.	FITTING DWG	



CONFIDENTIAL & PROPRIETARY
 All data contained in this document is sole property of **DRY SYSTEMS TECHNOLOGIES** and is considered confidential and proprietary. This document may not be reproduced, released to third parties, or used for purposes other than for which it was furnished, without express written consent of **DRY SYSTEMS TECHNOLOGIES**. This document remains property of **DRY SYSTEMS TECHNOLOGIES** and must be returned upon request.

	FITTING #	FITTING DESCRIPTION
1	6400-06-08	MJ-MAORB STR.
2	6400-06-12	MJ-MAORB STR.
3	6400-08-08	MJ-MAORB STR.
4	6400-08-12	MJ-MAORB STR.
5	6801-06-06	MJ-MAORB 90°



TOLERANCES	
Linear unless noted	
Machined: ±0.005	
Fabricated: ±0.02	
Angular: ±1/2°	
Surface finish 125	

DRY SYSTEMS TECHNOLOGIES
 8102 LEMONT ROAD, SUITE 700
 WOODRIDGE, IL 60517
 Phone: 630-427-2051 Fax: 630-427-1036
 E-Mail: eng@drysystemstech.com

DESCRIPTION		NO. RECD	
Hydraulic Tank Return			
SCALE	DATE	DRAWN BY	
None	8-7-19	JLW	
MATERIAL		APPROVED BY	
DRAWING NO.			
Tank Return			

