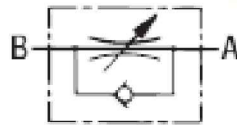


CONFIDENTIAL & PROPRIETARY

All data contained in this document is sole property of **DRY SYSTEMS TECHNOLOGIES** and is considered confidential and proprietary.

This document may not be reproduced, released to third parties, or used for purposes other than for which it was furnished, without express written consent of **DRY SYSTEMS TECHNOLOGIES**.

This document remains property of **DRY SYSTEMS TECHNOLOGIES** and must be returned upon request.



SECTION 5-19

TOLERANCES				
Linear unless noted				
Machined: ±0.005				
Fabricated: ±0.02				
Angular: ±1/2°				
Surface finish 125				
REV	DATE	NAME	DESCRIPTION	

DRY SYSTEMS TECHNOLOGIES
 10420 RISING COURT
 WOODRIDGE, IL 60517
 Phone: 630-427-2051 Fax: 630-427-1036
 E-Mail: eng@dryssystemstech.com

DESCRIPTION		NO RECD
FLOW CONTROL VALVE		1
SCALE	DATE	DRAWN BY
Full	May 09, 2018	W Fox
MATERIAL	APPROVED BY	
DRAWING NO	M375-546-01	

