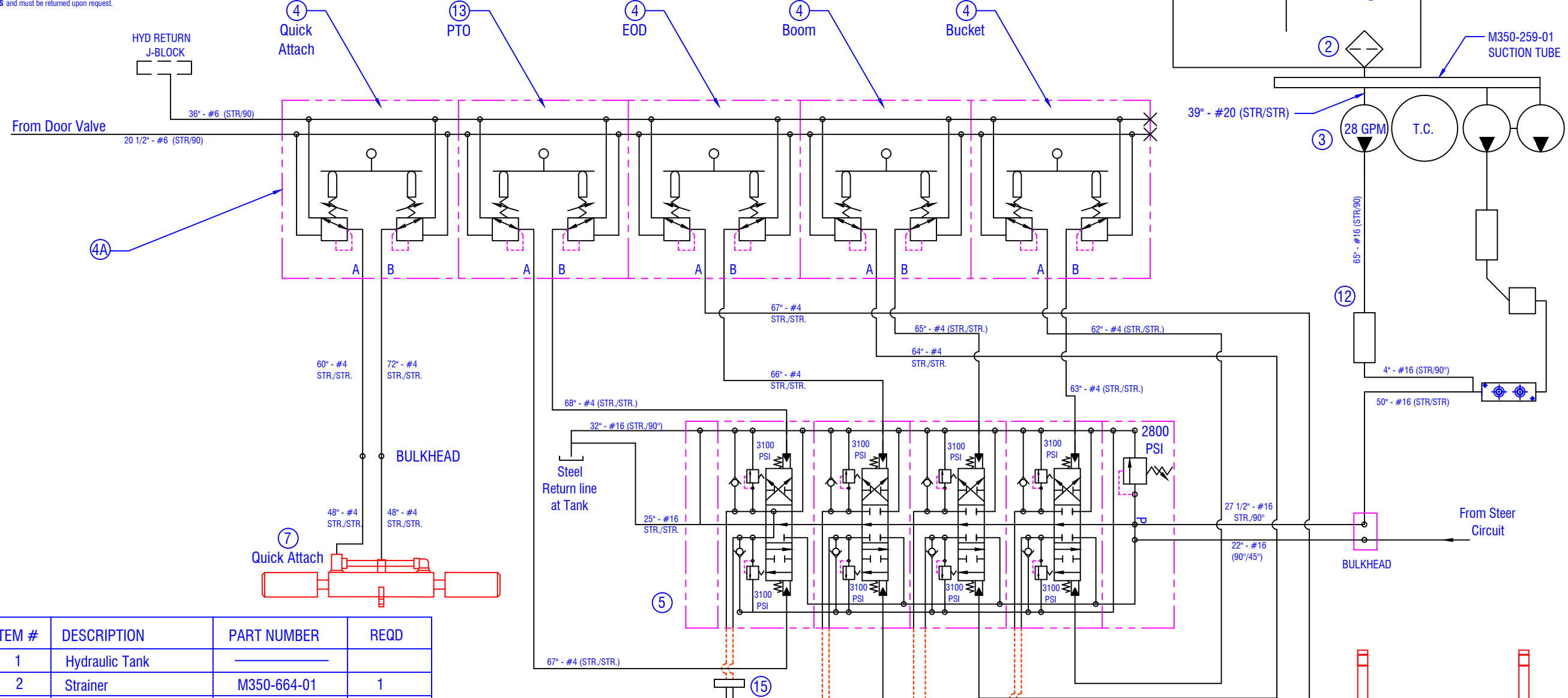


CONFIDENTIAL & PROPRIETARY
 All data contained in this document is sole property of DRY SYSTEMS TECHNOLOGIES and is considered confidential and proprietary. This document may not be reproduced, released to third parties, or used for purposes other than for which it was furnished, without express written consent of DRY SYSTEMS TECHNOLOGIES. This document remains property of DRY SYSTEMS TECHNOLOGIES and must be returned upon request.



ITEM #	DESCRIPTION	PART NUMBER	REQD
1	Hydraulic Tank		
2	Strainer	M350-664-01	1
3	Pump	M350-665-01	1
4	Pilot Valve	M350-682-01	4
4A	Kit - Tie Rod	M350-682-03	1
5	Boom Valve	M350-510-01	1
6	PTO		
7	Quick Attach Cylinder	M350-681-10	1
8	EOD Cylinder	M350-522-10	2
9	Hoist Cylinders	M350-505-10	2
10	Tilt Cylinder	M350-506-12	1
10 Alt	Tilt Cylinder w/Load Lock	M350-506-10	1
11	Filter, Return	M350-553-01	1
12	Test Adapter (Option)	M350-882-01	1
13	Pilot Valve w/ Detent	M350-682-09	1
14	J-Block	M350-624-01	2
15	PTO Manifold SN M600000 - M600029	M350-869-01 3/4" HOSE	1
15	PTO Manifold SN M600030 - UP	M350-869-02 1" HOSE	1

SECTION 5-20 1 OF 3

TOLERANCES

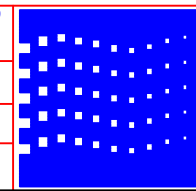
Linear unless noted	
Machined: ±0.005	
Fabricated: ±0.02	
Angular: ±1/2°	
Surface finish 125	

NOTE: MAIN VALVE STEEL TUBES

SN M600001 to M600030

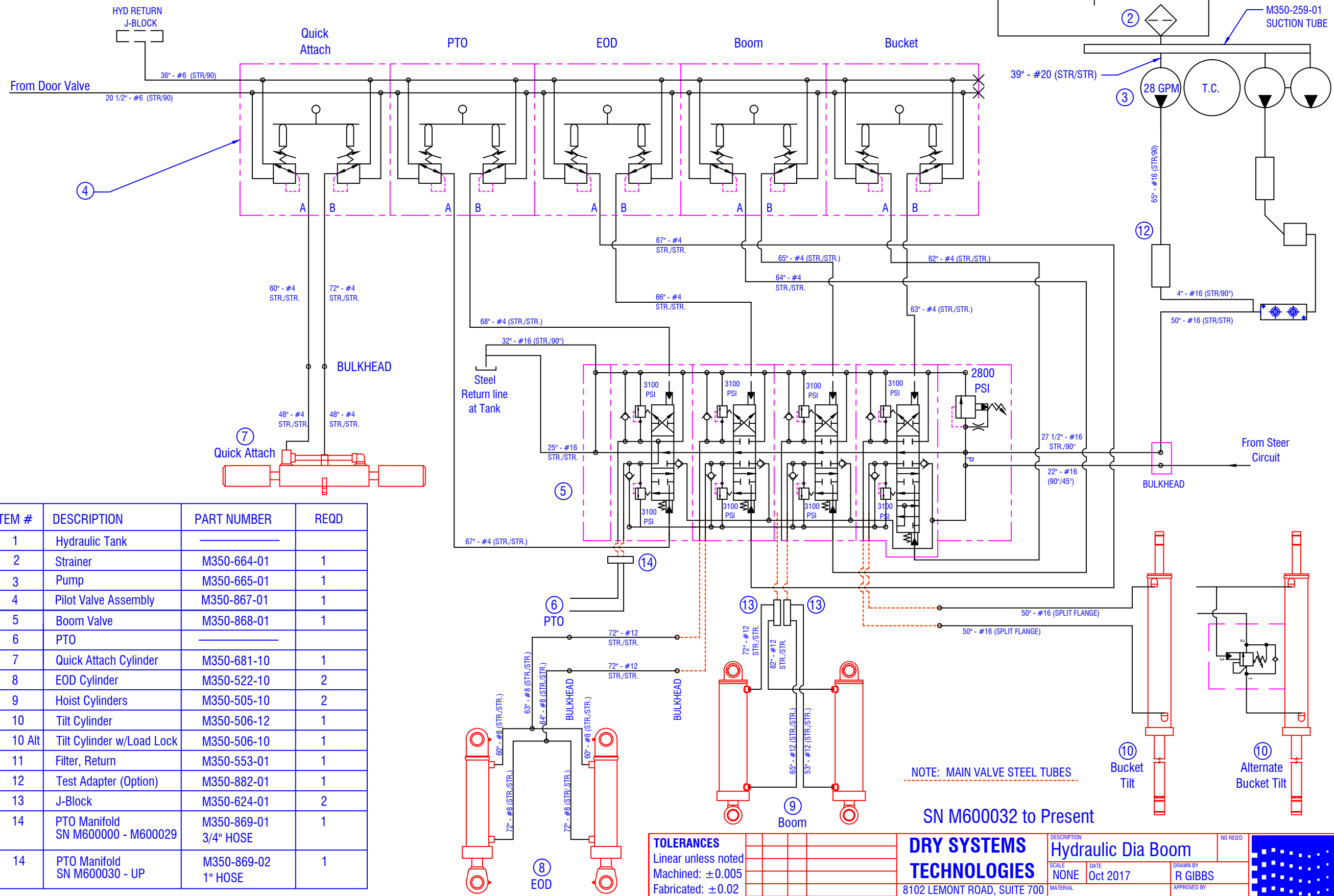
DRY SYSTEMS TECHNOLOGIES
 8102 LEMONT ROAD, SUITE 700
 WOODRIDGE, IL 60517
 Phone: 630-427-2051 Fax: 630-427-1036
 E-Mail: eng@drysystechnology.com

DESCRIPTION	Hydraulic Dia Boom		NO RECD
SCALE	NONE	DATE	JUL 2014
DRAWN BY	DHR		APPROVED BY
DRAWING NO	M350-008-07		



CONFIDENTIAL & PROPRIETARY

All data contained in this document is sole property of DRY SYSTEMS TECHNOLOGIES and is considered confidential and proprietary. This document may not be reproduced, released to third parties, or used for purposes other than for which it was furnished, without express written consent of DRY SYSTEMS TECHNOLOGIES. This document remains property of DRY SYSTEMS TECHNOLOGIES and must be returned upon request.



ITEM #	DESCRIPTION	PART NUMBER	REQD
1	Hydraulic Tank		
2	Strainer	M350-664-01	1
3	Pump	M350-665-01	1
4	Pilot Valve Assembly	M350-867-01	1
5	Boom Valve	M350-868-01	1
6	PTO		
7	Quick Attach Cylinder	M350-681-10	1
8	EOD Cylinder	M350-522-10	2
9	Hoist Cylinders	M350-505-10	2
10	Tilt Cylinder	M350-506-12	1
10 Alt	Tilt Cylinder w/Load Lock	M350-506-10	1
11	Filter, Return	M350-553-01	1
12	Test Adapter (Option)	M350-882-01	1
13	J-Block	M350-624-01	2
14	PTO Manifold SN M600000 - M600029	M350-869-01 3/4\" HOSE	1
14	PTO Manifold SN M600030 - UP	M350-869-02 1\" HOSE	1

SECTION 5-20 2 OF 3

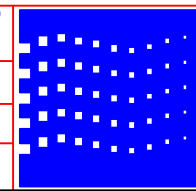
NOTE: MAIN VALVE STEEL TUBES

SN M600032 to Present

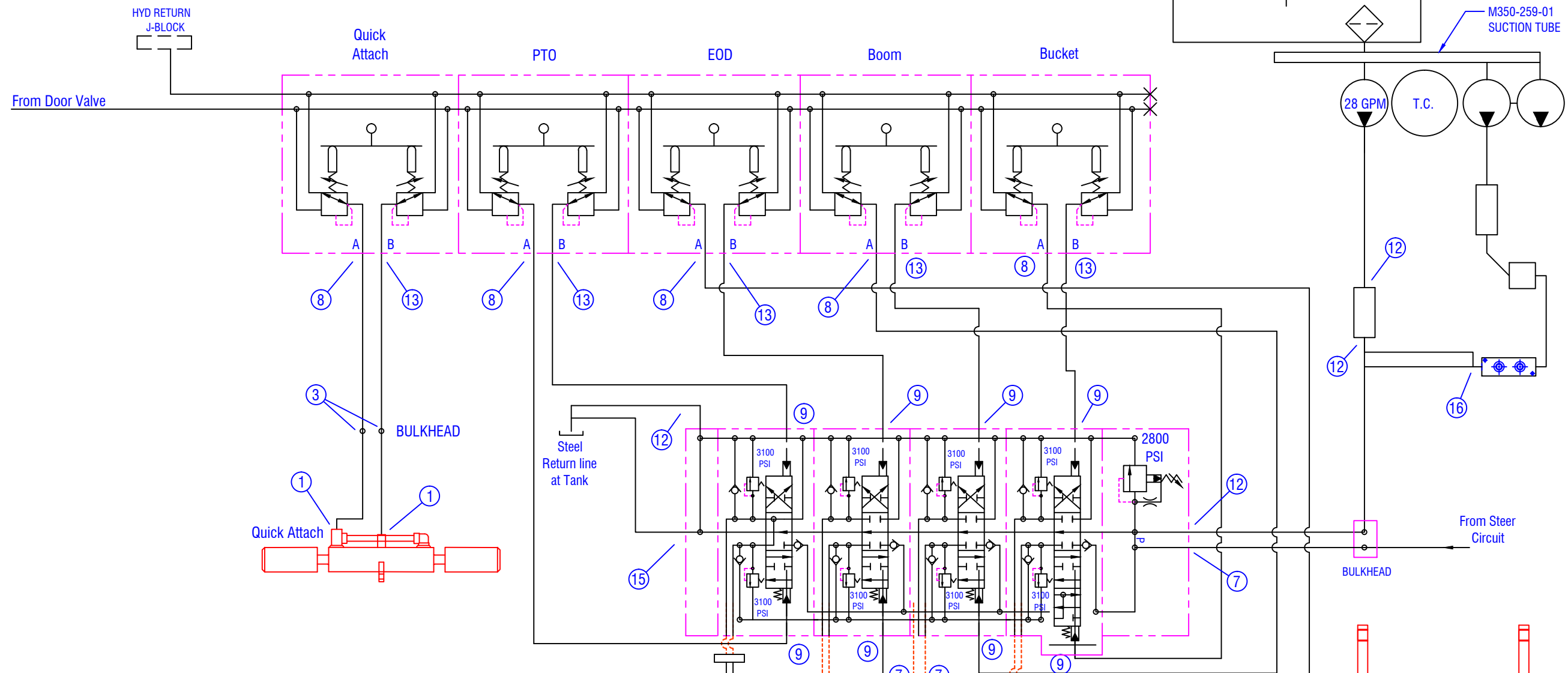
TOLERANCES			
Linear unless noted			
Machined: ±0.005			
Fabricated: ±0.02			
Angular: ±1/2°			
Surface finish 125			

DRY SYSTEMS TECHNOLOGIES
 8102 LEMONT ROAD, SUITE 700
 WOODRIDGE, IL 60517
 Phone: 630-427-2051 Fax: 630-427-1036
 E-Mail: eng@drysystemstech.com

DESCRIPTION			NO RECD
Hydraulic Dia Boom			
SCALE	DATE	DRAWN BY	
NONE	Oct 2017	R GIBBS	
MATERIAL	APPROVED BY		
DRAWING NO	DESCRIPTION		
M350-008-09			

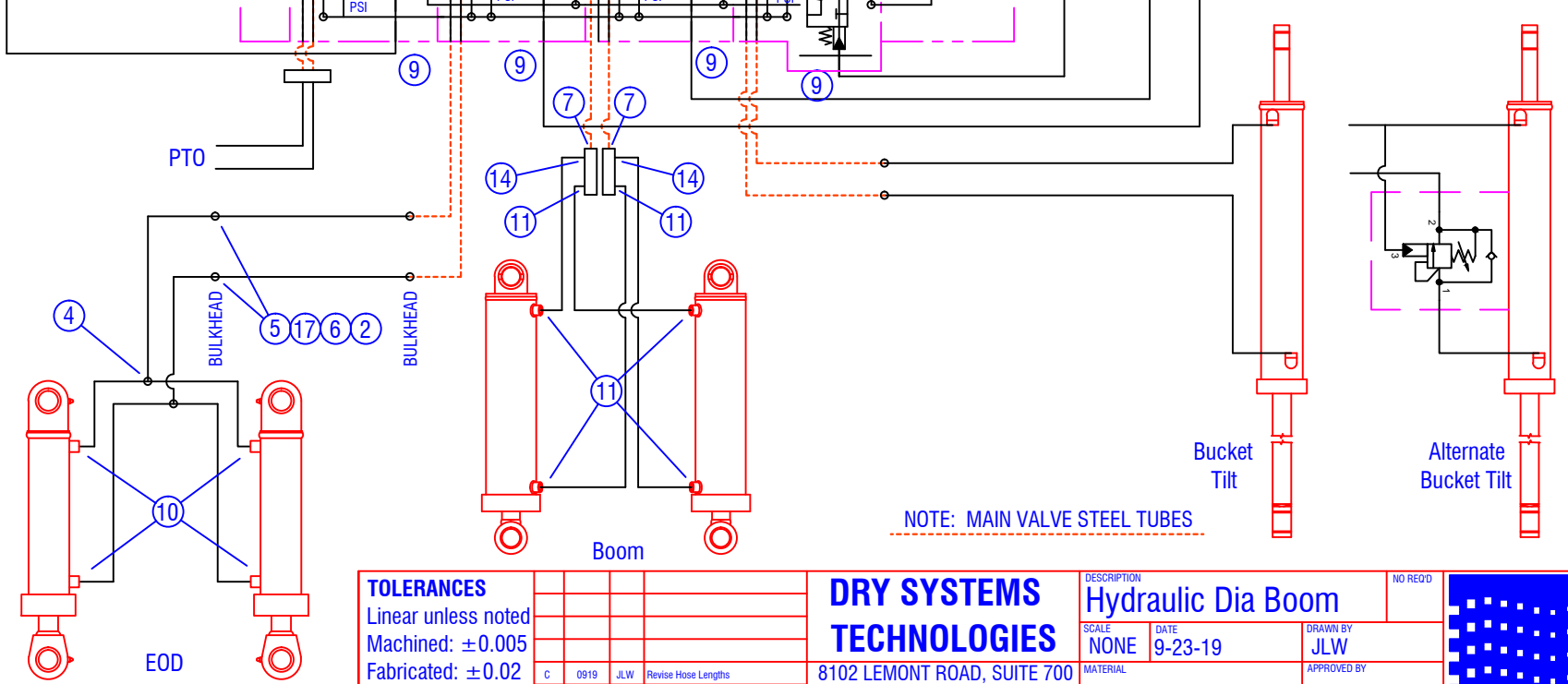


CONFIDENTIAL & PROPRIETARY
 All data contained in this document is sole property of DRY SYSTEMS TECHNOLOGIES and is considered confidential and proprietary. This document may not be reproduced, released to third parties, or used for purposes other than for which it was furnished, without express written consent of DRY SYSTEMS TECHNOLOGIES. This document remains property of DRY SYSTEMS TECHNOLOGIES and must be returned upon request.



FITTING #	FITTING DESCRIPTION
1	2501-04-04 MJ - MP 90°
2	2503-08-08 MJ - MP 45°
3	2700-04-04 MJ - MJ BULKHEAD STR.
4	2704-08-08-08 MJ - MJ - MJ TEE
5	2706-12-12 MP - MJ BULKHEAD STR.
6	5406-08-12 MP - FP REDUCER BUSHING
7	6400-16-16 MJ - MAORB STR.
8	6801-04-04 MJ - MAORB 90°
9	6801-04-06 MJ - MAORB 90°
10	6801-08-08 MJ - MAORB 90°
11	6801-12-12 MJ - MAORB 90°
12	6801-16-16 MJ - MAORB 90°
13	6801LL-04-04 MJ - MAORB 90° X LONG
14	6801LL-12-12 MJ - MAORB 90° X LONG
15	6802-16-16 MJ - MAORB 45°
16	6804-16-16-16 MJ - MAORB - MJ TEE
17	VP4000-5P QUICK COUPLER

SECTION 5-20 3 OF 3



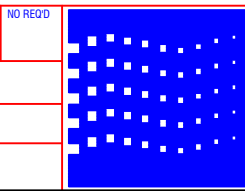
NOTE: MAIN VALVE STEEL TUBES

TOLERANCES
 Linear unless noted
 Machined: ±0.005
 Fabricated: ±0.02
 Angular: ±1/2°
 Surface finish 125

REV	DATE	NAME	DESCRIPTION
C	0919	JLW	Revise Hose Lengths
B	0915	RG	Add C'balance to tilt cyl
A	MAR2015	DWR	ADDED M350-682-09

DRY SYSTEMS TECHNOLOGIES
 8102 LEMONT ROAD, SUITE 700
 WOODRIDGE, IL 60517
 Phone: 630-427-2051 Fax: 630-427-1036
 E-Mail: eng@drysystechnology.com

DESCRIPTION	SCALE	DATE	DRAWN BY
Hydraulic Dia Boom	NONE	9-23-19	JLW
			APPROVED BY



FITTING DWG