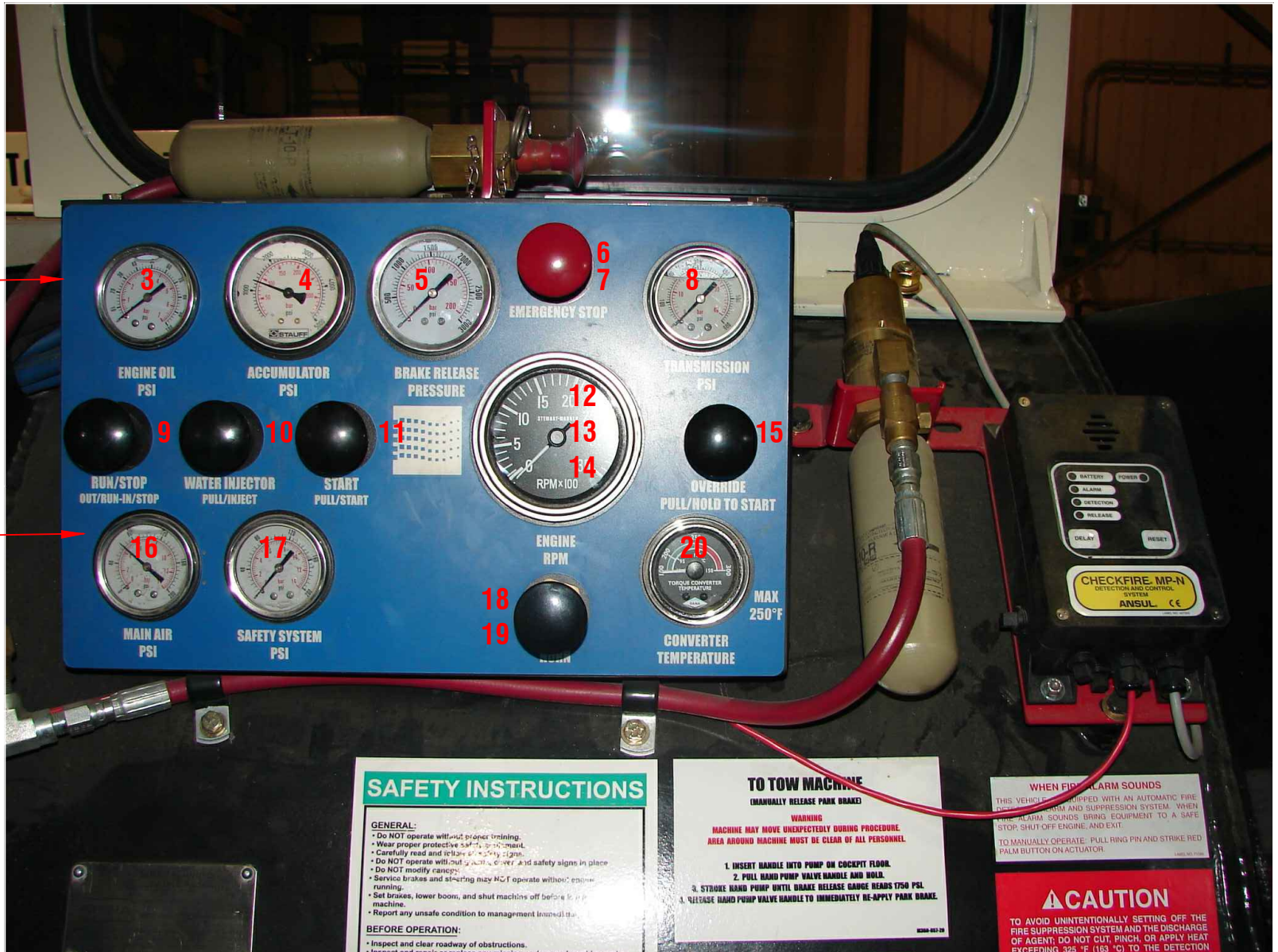


CONFIDENTIAL & PROPRIETARY

All data contained in this document is sole property of **DRY SYSTEMS TECHNOLOGIES** and is considered confidential and proprietary. This document may not be reproduced, released to third parties, or used for purposes other than for which it was furnished, without express written consent of **DRY SYSTEMS TECHNOLOGIES**. This document remains property of **DRY SYSTEMS TECHNOLOGIES** and must be returned upon request.



1

2

SAFETY INSTRUCTIONS

GENERAL:

- Do NOT operate without proper training.
- Wear proper protective safety equipment.
- Carefully read and follow all safety signs.
- Do NOT operate with out of order, cover and safety signs in place.
- Do NOT modify ratings.
- Service brakes and steering only NC F operate without engine running.
- Set brakes, lower boom, and shut machine off before leaving machine.
- Report any unsafe condition to management involved.

BEFORE OPERATION:

- Inspect and clear roadway of obstructions.
- Inspect and repair or replace any defective or damaged parts.

TO TOW MACHINE

(MANUALLY RELEASE PARK BRAKE)

WARNING
MACHINE MAY MOVE UNEXPECTEDLY DURING PROCEDURE. AREA AROUND MACHINE MUST BE CLEAR OF ALL PERSONNEL.

1. INSERT HANDLE INTO PUMP ON COCKPIT FLOOR.
2. PULL HAND PUMP VALVE HANDLE AND HOLD.
3. STROKE HAND PUMP UNTIL BRAKE RELEASE GAGE READS 1750 PSI.
4. RELEASE HAND PUMP VALVE HANDLE TO IMMEDIATELY RE-APPLY PARK BRAKE.

WHEN FIRE ALARM SOUNDS

THIS VEHICLE IS EQUIPPED WITH AN AUTOMATIC FIRE DETECTION, ALARM AND SUPPRESSION SYSTEM. WHEN FIRE ALARM SOUNDS BRING EQUIPMENT TO A SAFE STOP, SHUT OFF ENGINE, AND EXIT.

TO MANUALLY OPERATE: PULL RING PIN AND STRIKE RED PALM BUTTON ON ACTUATOR.

CAUTION

TO AVOID UNINTENTIONALLY SETTING OFF THE FIRE SUPPRESSION SYSTEM AND THE DISCHARGE OF AGENT, DO NOT CUT, PINCH, OR APPLY HEAT EXCEEDING 325 °F (163 °C) TO THE DETECTION

TOLERANCES

Linear unless noted
Machined: ±0.005
Fabricated: ±0.02
Angular: ±1/2°
Surface finish 125

REV	DATE	NAME	DESCRIPTION

DRY SYSTEMS TECHNOLOGIES

10420 RISING COURT
WOODRIDGE, IL 60517
Phone: 630-427-2051 Fax: 630-427-1036
E-Mail: eng@dryssystemstech.com

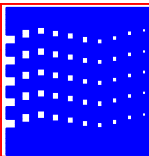
DESCRIPTION
CAB & DASH CONTROLS

SCALE: None DATE: August 4, 2015 DRAWN BY: W Fox

MATERIAL: APPROVED BY:

DRAWING NO: **CAB & DASH**

NO RECD
1



CONFIDENTIAL & PROPRIETARY

All data contained in this document is sole property of **DRY SYSTEMS TECHNOLOGIES** and is considered confidential and proprietary.

This document may not be reproduced, released to third parties, or used for purposes other than for which it was furnished, without express written consent of **DRY SYSTEMS TECHNOLOGIES**.

This document remains property of **DRY SYSTEMS TECHNOLOGIES** and must be returned upon request.



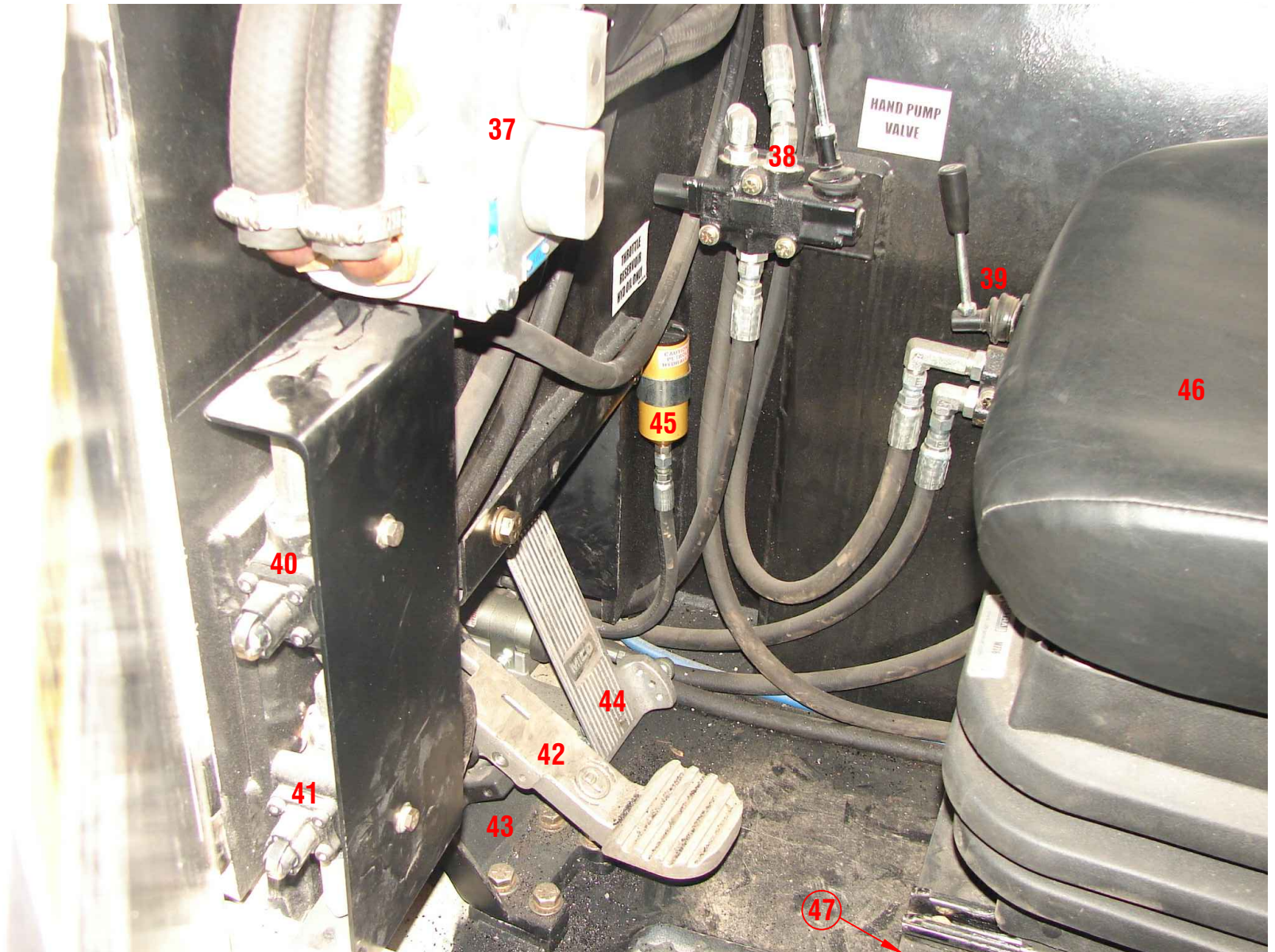
TOLERANCES Linear unless noted Machined: ±0.005 Fabricated: ±0.02 Angular: ±1/2° Surface finish 125						DRY SYSTEMS TECHNOLOGIES 10420 RISING COURT WOODRIDGE, IL 60517 Phone: 630-427-2051 Fax: 630-427-1036 E-Mail: and@dryssystemstech.com	DESCRIPTION CAB & DASH CONTROLS	NO RECD 1	DRY SYSTEMS TECHNOLOGIES	
							SCALE None	DATE August 4, 2015		DRAWN BY W Fox
										APPROVED BY
								DRAWING NO CAB & DASH		

CONFIDENTIAL & PROPRIETARY

All data contained in this document is sole property of **DRY SYSTEMS TECHNOLOGIES** and is considered confidential and proprietary.

This document may not be reproduced, released to third parties, or used for purposes other than for which it was furnished, without express written consent of **DRY SYSTEMS TECHNOLOGIES**.

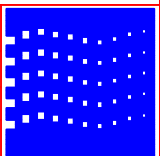
This document remains property of **DRY SYSTEMS TECHNOLOGIES** and must be returned upon request.



TOLERANCES	
Linear unless noted	
Machined: ± 0.005	
Fabricated: ± 0.02	
Angular: $\pm 1/2^\circ$	
Surface finish 125	
REV	DATE NAME DESCRIPTION

DRY SYSTEMS TECHNOLOGIES
 10420 RISING COURT
 WOODRIDGE, IL 60517
 Phone: 630-427-2051 Fax: 630-427-1036
 E-Mail: ansi@drysystemstech.com

DESCRIPTION			NO RECD
CAB & DASH CONTROLS			1
SCALE	DATE	DRAWN BY	
None	August 4, 2015	W Fox	
MATERIAL		APPROVED BY	
DRAWING NO			
CAB & DASH			



CAB AND DASH CONTROLS

SECTION 8-01 4 of 4

ITEM	PART NUMBER	DESCRIPTION	NOTES
1	M350-242-00	CONTROL PANEL, WELDMENT	
2	M350-657-01	TAG, CONTROL PANEL	
3	M350-885-01	GAUGE, OIL PRESSURE, ENGINE	REF SECTION 2-07
4	M350-891-01	GAUGE, ACCUMULATOR PRESSURE	
5	M350-891-01	GAUGE, BRAKE RELEASE PRESSURE	
6	M30-547-01	VALVE, 3-WAY PUSH BUTTON, E-STOP	
7	M30-547-23	KNOB, RED, E-STOP	
8	M350-887-01	GAUGE, TRANSMISSION PRESSURE	
9	M30-547-01	VALVE, 3-WAY PUSH BUTTON, RUN/STOP	
	M30-547-21	REPLACEMENT KNOB, BLACK, PUSH PULL VALVE	
10	M30-558-01	VALVE, 3-WAY SPRING LOADED, WATER INJECTION	
11	M30-558-01	VALVE, 3-WAY SPRING LOADED, START	
12	M502-586-01	TACHOMETER	
13	M350-640-01	ADAPTER, 90, S/W TACHOMETER	
14	M250-599-01	CABLE, TACHOMETER	
15	M30-558-01	VALVE, 3-WAY SPRING LOADED, OVERRIDE	
16	M350-886-01	GAUGE, MAIN AIR PRESSURE	
17	M350-886-01	GAUGE, SAFETY SYSTEM PRESSURE	
18	M350-589-01	VALVE, AIR HORN	
19	M350-590-01	KNOB, AIR VALVE, HORN	
20	M503-571-01	GAUGE, CONVERTOR TEMPERATURE	
21	M350-243-01	4 GAUGE DASH, WELDMENT	
22	M350-657-02	TAG, 4 GAUGE DASH	
23	M30-541-02	GAUGE, EXHAUST TEMPERATURE	
24	M30-543-01	GAUGE, EXHAUST BACK PRESSURE	REF SECTION 2-13
25	M30-542-02	GAUGE, COOLANT TEMPERATURE	REF SECTION 2-11
26	M250-582-01	GAUGE, INTAKE VACUUM	REF SECTION 2-10
27	M350-890-01	GAUGE, MAIN VALVE PRESSURE	
28	M350-241-00	CONTROL VALVE HOUSING, WELDMENT	
29	M350-657-08	TAG, DASH, STEERING	
30	M350-564-01	VALVE, HYD, PILOT, STEERING	REF SECTION 5-06
31		VALVE, PILOT, SINGLE LEVER ASSEMBLY	REF SECTION 5-24
32		VALVE, PILOT, SINGLE LEVER W/DETENT, PTO	REF SECTION 5-24
33	M350-657-03	TAG, DASH, SHIFT PATTERN	
34	M59-301-01	KIT, GAS SAMPLING, IN BY PACKAGE	REF SECTION 2-13
35	M350-883-01	VALVE, PARK BRAKE APPLY	REF SECTION 5-17
36	M350-239-10	TRANSMISSION VALVE LEVER ASSEMBLY	REF SECTION 8-02
37	M261-512-01	LIGHT SWITCH, PERMISSIBLE	REF SECTION 7-06
38	M350-562-05	DIVERTOR VALVE, HAND PUMP	REF SECTION 5-13
39	M350-532-05	DIVERTOR VALVE, BRAKE TEST	
40	M350-881-01	VALVE, HYD, CAM ACTION, STEERING & BOOM	REF SECTION 5-14
41	M350-881-01	VALVE, HYD, CAM ACTION, ENGAGE BRAKES	
42	M350-508-02	BRAKE PEDAL	REF SECTION 8-05
43	M350-237-00	BRAKE PEDAL MOUNT, WELDMENT	
44	M150-581-01	PEDAL & ACTUATOR, THROTTLE SN M600000 TO M600028	REF SECTION 8-03
	M365-581-01	THROTTLE PEDAL, HYD SN M600029 AND UP	REF SECTION 8-04
45	M150-552-01	RESERVOIR, THROTTLE SN M600000 TO M600028	REF SECTION 8-03
46	M350-531-02	SEAT, AIR RIDE, W/SEAT BELT	REF SECTION 4-17
47	M192-524-01	HAND PUMP (not shown)	REF SECTION 5-18